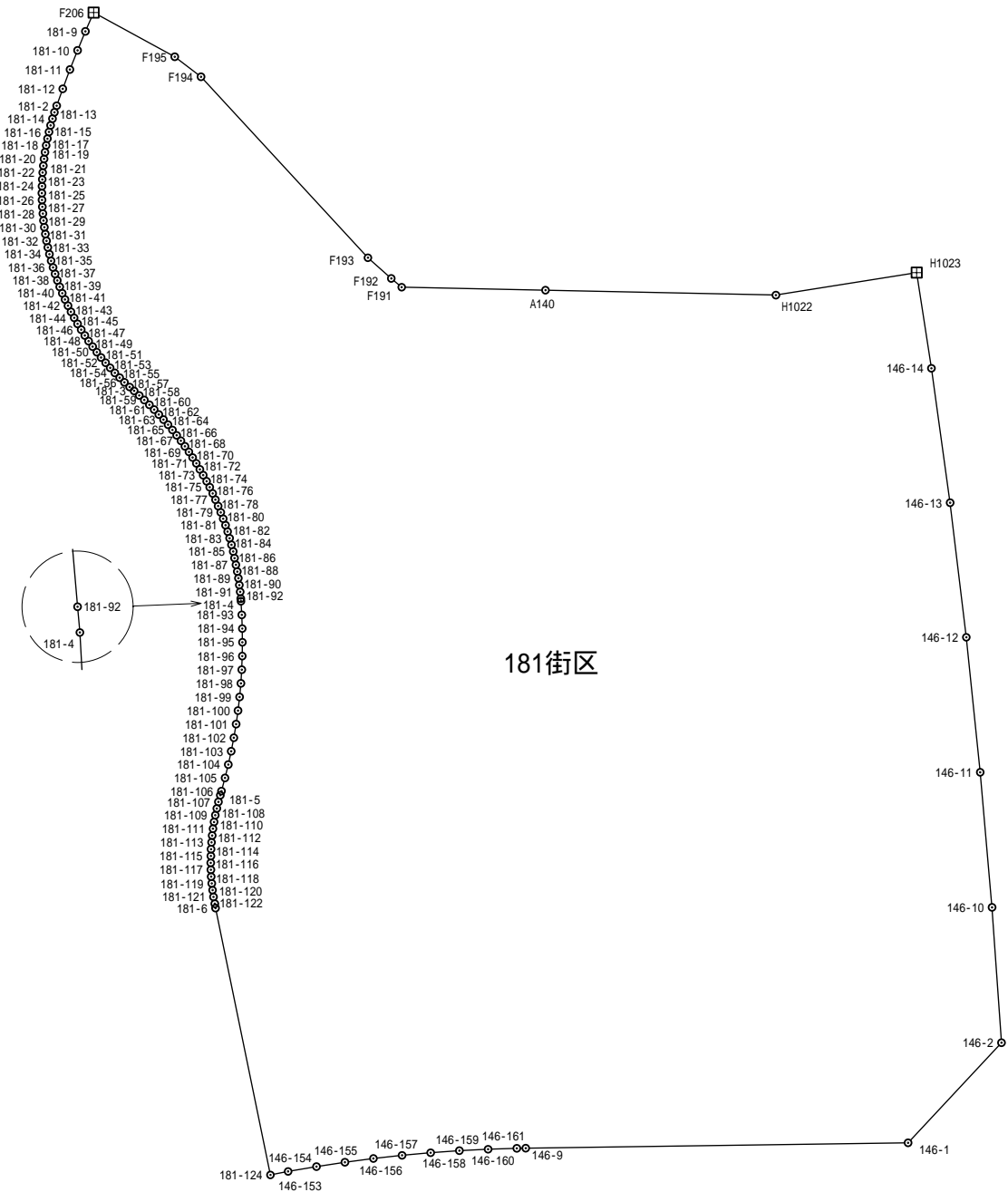
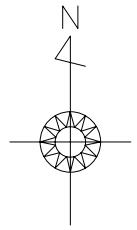


181街区

土地の所在

山形市大字松原

縮尺 S=1:1,000



181街区

凡 例

境界	境界標の種類
田	コンクリート杭
⊠	プラスチック杭
⊞	金 属 標
。	無 標

面積 (座 標 法) 計 算 書

地 番 : 181街区

測点名	[1] X(i)	[2] X(i+1)-X(i-1)	[3] Y(i)	[4] Y(i+1)-Y(i-1)	[2]*[3]	[1]*[4]	方向角	夾 角	距 離
F206	-200943.854	3.715	-47011.986	-13.041	-174635.330552	2620457.155722	203-42-10	85-03-31	3.002
181-9	-200946.603	-5.530	-47013.193	-2.354	259989.163031	473018.457078	202-24-48	178-42-38	3.008
181-10	-200949.384	-5.577	-47014.340	-2.256	262198.974180	453341.810304	201-38-07	179-13-19	3.008
181-11	-200952.180	-5.605	-47015.449	-2.154	263521.591645	432850.995720	200-24-22	178-46-15	2.997
181-12	-200954.989	-5.283	-47016.494	-1.938	248388.137802	389450.768682	199-50-50	179-26-28	2.630
181-2	-200957.463	-3.426	-47017.387	-1.214	161081.567862	243962.360082	198-38-00	178-47-10	1.005
181-13	-200958.415	-1.898	-47017.708	-0.611	89239.609784	122785.591565	197-02-35	178-24-35	0.989
181-14	-200959.361	-1.913	-47017.998	-0.557	89945.430174	111934.364077	195-26-08	178-23-33	1.003
181-15	-200960.328	-1.933	-47018.265	-0.505	90886.306245	101484.965640	193-50-27	178-24-19	0.995
181-16	-200961.294	-1.940	-47018.503	-0.468	91215.895820	94049.885592	193-17-11	179-26-44	1.001
181-17	-200962.268	-1.959	-47018.733	-0.416	92109.697947	83600.303488	190-41-36	177-24-25	1.002
181-18	-200963.253	-1.972	-47018.919	-0.352	92721.308268	70739.065056	189-32-49	178-51-13	1.001
181-19	-200964.240	-1.977	-47019.085	-0.309	92956.731045	62097.950160	188-13-09	178-40-20	1.000
181-20	-200965.230	-1.985	-47019.228	-0.259	93333.167580	52049.994570	186-38-59	178-25-50	1.002
181-21	-200966.225	-1.990	-47019.344	-0.205	93568.494560	41198.076125	185-06-41	178-27-42	0.999
181-22	-200967.220	-1.992	-47019.433	-0.145	93662.710536	29140.246900	183-12-53	178-06-12	0.999
181-23	-200968.217	-1.994	-47019.489	-0.091	93756.861066	18288.107747	182-00-38	178-47-45	0.998
181-24	-200969.214	-1.999	-47019.524	-0.047	93992.028476	9445.553058	180-41-10	178-40-32	1.002
181-25	-200970.216	-1.998	-47019.536	0.006	93945.032928	-1205.821296	178-57-53	178-16-43	0.996
181-26	-200971.212	-2.003	-47019.518	0.060	94180.094554	-12058.272720	177-36-42	178-38-49	1.008
181-27	-200972.219	-2.000	-47019.476	0.115	94038.952000	-23111.805185	175-47-44	178-11-02	0.996
181-28	-200973.212	-1.997	-47019.403	0.162	93897.747791	-32557.660344	174-56-03	179-08-19	1.008
181-29	-200974.216	-1.986	-47019.314	0.209	93380.357604	-42003.611144	173-01-59	178-05-56	0.989
181-30	-200975.198	-1.972	-47019.194	0.270	92721.850568	-54263.303460	171-23-04	178-21-05	1.001
181-31	-200976.188	-1.981	-47019.044	0.322	93144.726164	-64714.332536	170-09-13	178-46-09	1.006
181-32	-200977.179	-1.966	-47018.872	0.378	92439.102352	-75969.373662	168-04-12	177-54-59	0.997
181-33	-200978.154	-1.953	-47018.666	0.427	91827.454698	-85817.671758	167-16-00	179-11-48	1.003
181-34	-200979.132	-1.949	-47018.445	0.470	91638.949305	-94460.192040	165-37-02	178-21-02	1.002
181-35	-200980.103	-1.938	-47018.196	0.523	91121.263848	-105112.593869	164-10-48	178-33-46	1.005
181-36	-200981.070	-1.911	-47017.922	0.580	89851.248942	-116569.020600	162-02-23	177-51-35	0.992
181-37	-200982.014	-1.891	-47017.616	0.631	88910.311856	-126819.650834	161-03-30	179-01-07	1.001

地 番： 181街区

測点名	[1] X(i)	[2] X(i+1)-X(i-1)	[3] Y(i)	[4] Y(i+1)-Y(i-1)	[2]*[3]	[1]*[4]	方向角	夾 角	距 離
181-38	-200982.961	-1.887	-47017.291	0.680	88721.628117	-136668.413480	159-18-38	178-15-08	1.005
181-39	-200983.901	-1.866	-47016.936	0.720	87733.602576	-144708.408720	158-29-14	179-10-36	0.995
181-40	-200984.827	-1.842	-47016.571	0.763	86604.523782	-153351.423001	156-30-55	178-01-41	0.999
181-41	-200985.743	-1.821	-47016.173	0.827	85616.451033	-166215.209461	154-38-15	178-07-20	1.002
181-42	-200986.648	-1.800	-47015.744	0.877	84628.339200	-176265.290296	153-24-34	178-46-19	1.001
181-43	-200987.543	-1.774	-47015.296	0.918	83405.135104	-184506.564474	151-52-00	178-27-26	0.997
181-44	-200988.422	-1.752	-47014.826	0.966	82369.975152	-194154.815652	150-23-48	178-31-48	1.004
181-45	-200989.295	-1.731	-47014.330	1.012	81381.805230	-203401.166540	148-58-38	178-34-50	1.001
181-46	-200990.153	-1.700	-47013.814	1.055	79923.483800	-212044.611415	147-22-30	178-23-52	1.000
181-47	-200990.995	-1.669	-47013.275	1.098	78465.155975	-220688.112510	145-56-38	178-34-08	0.998
181-48	-200991.822	-1.638	-47012.716	1.138	77006.828808	-228728.693436	144-28-32	178-31-54	0.996
181-49	-200992.633	-1.612	-47012.137	1.185	75783.564844	-238176.270105	142-53-26	178-24-54	1.004
181-50	-200993.434	-1.573	-47011.531	1.240	73949.138263	-249231.858160	140-36-20	177-42-54	0.999
181-51	-200994.206	-1.534	-47010.897	1.288	72114.715998	-258880.537328	139-21-42	178-45-22	1.004
181-52	-200994.968	-1.512	-47010.243	1.318	71079.487416	-264911.367824	138-28-50	179-07-08	1.002
181-53	-200995.718	-1.480	-47009.579	1.347	69574.176920	-270741.232146	136-54-18	178-25-28	1.000
181-54	-200996.448	-1.444	-47008.896	1.389	67880.845824	-279184.066272	135-19-22	178-25-04	1.004
181-55	-200997.162	-1.382	-47008.190	1.409	64965.318580	-283205.001258	133-32-15	178-12-53	0.970
181-56	-200997.830	-1.360	-47007.487	1.452	63930.182320	-291848.849160	132-44-05	179-11-50	1.020
181-57	-200998.522	-1.263	-47006.738	1.404	59369.510094	-282201.924888	131-04-50	178-20-45	0.869
181-3	-200999.093	-1.227	-47006.083	1.406	57676.463841	-282604.724758	131-08-14	180-03-24	0.997
181-58	-200999.749	-1.323	-47005.332	1.496	62188.054236	-300695.624504	131-50-17	180-42-03	1.000
181-59	-201000.416	-1.358	-47004.587	1.468	63832.229146	-295068.610688	133-42-13	181-51-56	1.000
181-60	-201001.107	-1.395	-47003.864	1.434	65570.390280	-288235.587438	134-43-00	181-00-47	1.001
181-61	-201001.811	-1.429	-47003.153	1.396	67167.505637	-280598.528156	136-37-30	181-54-30	0.997
181-62	-201002.536	-1.457	-47002.468	1.365	68482.595876	-274368.461640	137-06-33	180-29-03	0.999
181-63	-201003.268	-1.482	-47001.788	1.343	69656.649816	-269947.388924	138-31-24	181-24-51	1.001
181-64	-201004.018	-1.523	-47001.125	1.294	71582.713375	-260099.199292	140-46-31	182-15-07	0.998
181-65	-201004.791	-1.554	-47000.494	1.259	73038.767676	-253065.031869	141-11-50	180-25-19	1.002
181-66	-201005.572	-1.572	-46999.866	1.246	73883.789352	-250452.942712	142-00-00	180-48-10	1.004
181-67	-201006.363	-1.600	-46999.248	1.201	75198.796800	-241408.641963	144-13-19	182-13-19	0.997
181-68	-201007.172	-1.631	-46998.665	1.164	76654.822615	-233972.348208	144-44-49	180-31-30	1.007
181-69	-201007.994	-1.639	-46998.084	1.126	77029.859676	-226335.001244	146-17-38	181-32-49	0.982

地 番： 181街区

測点名	[1] X(i)	[2] X(i+1)-X(i-1)	[3] Y(i)	[4] Y(i+1)-Y(i-1)	[2]*[3]	[1]*[4]	方向角	夾 角	距 離
181-70	-201008.811	-1.668	-46997.539	1.083	78391.895052	-217692.542313	147-41-57	181-24-19	1.007
181-71	-201009.662	-1.724	-46997.001	1.063	81022.829724	-213673.270706	148-58-42	181-16-45	1.019
181-72	-201010.535	-1.732	-46996.476	1.014	81397.896432	-203824.682490	150-20-55	181-22-13	0.988
181-73	-201011.394	-1.734	-46995.987	0.972	81491.041458	-195383.074968	151-06-05	180-45-10	0.999
181-74	-201012.269	-1.760	-46995.504	0.942	82712.087040	-189353.557398	152-35-12	181-29-07	0.997
181-75	-201013.154	-1.793	-46995.045	0.896	84262.115685	-180107.785984	154-17-58	181-42-46	1.008
181-76	-201014.062	-1.808	-46994.608	0.840	84966.251264	-168851.812080	155-52-42	181-34-44	0.986
181-77	-201014.962	-1.823	-46994.205	0.788	85670.435715	-158399.790056	157-21-29	181-28-47	1.000
181-78	-201015.885	-1.853	-46993.820	0.772	87079.548460	-155184.263220	157-24-23	180-02-54	1.007
181-79	-201016.815	-1.861	-46993.433	0.743	87454.778813	-149355.493545	159-04-26	181-40-03	0.997
181-80	-201017.746	-1.870	-46993.077	0.693	87877.053990	-139305.297978	160-15-26	181-11-00	0.998
181-81	-201018.685	-1.888	-46992.740	0.648	88722.293120	-130260.107880	161-51-19	181-35-53	0.999
181-82	-201019.634	-1.906	-46992.429	0.602	89567.569674	-121013.819668	163-05-12	181-13-53	1.000
181-83	-201020.591	-1.920	-46992.138	0.564	90224.904960	-113375.613324	164-10-21	181-05-09	1.001
181-84	-201021.554	-1.933	-46991.865	0.519	90835.275045	-104330.186526	165-46-10	181-35-49	1.001
181-85	-201022.524	-1.940	-46991.619	0.449	91163.740860	-90259.113276	168-10-47	182-24-37	0.991
181-86	-201023.494	-1.955	-46991.416	0.404	91868.218280	-81213.491576	168-27-59	180-17-12	1.005
181-87	-201024.479	-1.965	-46991.215	0.397	92337.737475	-79806.718163	168-41-24	180-13-25	0.999
181-88	-201025.459	-1.949	-46991.019	0.360	91585.496031	-72369.165240	170-23-38	181-42-14	0.983
181-89	-201026.428	-1.967	-46990.855	0.301	92431.011785	-60508.954828	172-11-01	181-47-23	1.007
181-90	-201027.426	-1.995	-46990.718	0.260	93746.482410	-52267.130760	172-58-01	180-47-00	1.005
181-91	-201028.423	-1.987	-46990.595	0.206	93370.312265	-41411.855138	175-12-27	182-14-26	0.993
181-92	-201029.413	-1.366	-46990.512	0.117	64189.039392	-23520.441321	174-49-59	179-37-32	0.378
181-4	-201029.789	-2.369	-46990.478	0.148	111320.442382	-29752.408772	176-43-34	181-53-35	1.996
181-93	-201031.782	-3.990	-46990.364	0.184	187491.552360	-36989.847888	177-59-33	181-15-59	1.998
181-94	-201033.779	-3.993	-46990.294	0.095	187632.243942	-19098.209005	179-16-57	181-17-24	1.996
181-95	-201035.775	-4.006	-46990.269	0.005	188243.017614	-1005.178875	180-34-12	181-17-15	2.010
181-96	-201037.785	-4.007	-46990.289	-0.097	188290.088023	19500.665145	182-12-29	181-38-17	1.998
181-97	-201039.782	-3.994	-46990.366	-0.203	187679.521804	40811.075746	183-36-37	181-24-08	2.001
181-98	-201041.779	-3.984	-46990.492	-0.318	187210.120128	63931.285722	185-31-09	181-54-32	1.996
181-99	-201043.766	-3.975	-46990.684	-0.422	186787.968900	84840.469252	186-35-58	181-04-49	2.001
181-100	-201045.754	-3.968	-46990.914	-0.506	186459.946752	101729.151524	187-56-08	181-20-10	1.999
181-101	-201047.734	-3.958	-46991.190	-0.607	185991.130020	122035.974538	189-30-00	181-33-52	2.006

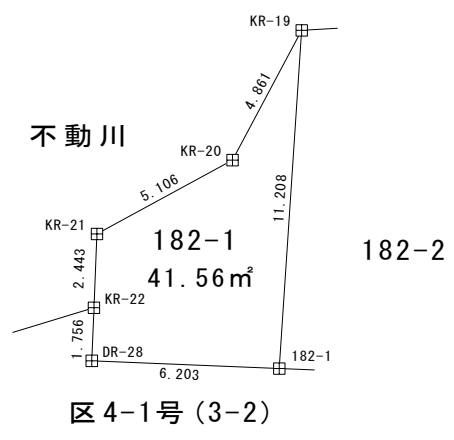
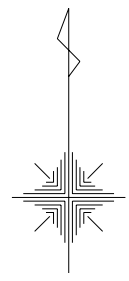
地 番： 181街区

測点名	[1] X(i)	[2] X(i+1)-X(i-1)	[3] Y(i)	[4] Y(i+1)-Y(i-1)	[2]*[3]	[1]*[4]	方向角	夾 角	距 離
181-102	-201049.712	-3.942	-46991.521	-0.716	185240.575782	143951.593792	191-05-27	181-35-27	2.001
181-103	-201051.676	-3.917	-46991.906	-0.812	184067.295802	163253.960912	192-19-59	181-14-32	1.999
181-104	-201053.629	-3.900	-46992.333	-0.902	183270.098700	181350.373358	193-42-37	181-22-38	2.004
181-105	-201055.576	-3.872	-46992.808	-0.997	181956.152576	200452.409272	195-10-19	181-27-42	1.995
181-106	-201057.501	-2.536	-46993.330	-0.696	119175.084880	139936.020696	195-53-45	180-43-26	0.635
181-5	-201058.112	-1.569	-46993.504	-0.444	73732.807776	89269.801728	195-44-23	179-50-38	0.995
181-107	-201059.070	-1.931	-46993.774	-0.509	90744.977594	102339.066630	193-48-02	178-03-39	1.002
181-108	-201060.043	-1.955	-46994.013	-0.454	91873.295415	91281.259522	192-20-58	178-32-56	1.005
181-109	-201061.025	-1.963	-46994.228	-0.394	92249.669564	79218.043850	190-20-27	177-59-29	0.997
181-110	-201062.006	-1.966	-46994.407	-0.338	92391.004162	67958.958028	189-10-11	178-49-44	0.998
181-111	-201062.991	-1.983	-46994.566	-0.280	93190.224378	56297.637480	186-54-47	177-44-36	1.005
181-112	-201063.989	-1.990	-46994.687	-0.215	93519.427130	43228.757635	185-24-47	178-30-00	0.996
181-113	-201064.981	-1.989	-46994.781	-0.160	93472.619409	32170.396960	183-47-15	178-22-28	0.999
181-114	-201065.978	-1.999	-46994.847	-0.101	93942.699153	20307.663778	182-00-02	178-12-47	1.003
181-115	-201066.980	-2.001	-46994.882	-0.050	94036.758882	10053.349000	180-51-37	178-51-35	0.999
181-116	-201067.979	-1.998	-46994.897	0.017	93895.804206	-3418.155643	178-09-55	177-18-18	1.000
181-117	-201068.978	-2.008	-46994.865	0.071	94365.688920	-14275.897438	177-47-11	179-37-16	1.010
181-118	-201069.987	-1.995	-46994.826	0.116	93754.677870	-23324.118492	175-32-05	177-44-54	0.989
181-119	-201070.973	-1.975	-46994.749	0.200	92814.629275	-40214.194600	172-54-38	177-22-33	0.997
181-120	-201071.962	-1.979	-46994.626	0.262	93002.364854	-52680.854044	172-00-28	179-05-50	1.000
181-121	-201072.952	-1.980	-46994.487	0.313	93049.084260	-62935.833976	170-01-54	178-01-26	1.005
181-122	-201073.942	-1.619	-46994.313	0.302	76083.792747	-60724.330484	168-29-51	178-27-57	0.642
181-6	-201074.571	-39.584	-46994.185	8.134	1860217.819040	-1635540.560514	168-23-11	179-53-20	39.769
181-124	-201113.526	-38.449	-46986.179	10.584	1806571.596371	-2128585.559184	78-53-43	90-30-32	2.627
146-153	-201113.020	1.220	-46983.601	6.720	-57319.993220	-1351479.494400	80-13-10	181-19-27	4.203
146-154	-201112.306	1.345	-46979.459	8.295	-63187.372355	-1668226.578270	81-21-38	181-08-28	4.201
146-155	-201111.675	1.172	-46975.306	8.311	-55055.058632	-1671439.130925	82-35-13	181-13-35	4.193
146-156	-201111.134	1.006	-46971.148	8.340	-47252.974888	-1677266.857560	83-39-19	181-04-06	4.208
146-157	-201110.669	0.841	-46966.966	8.360	-39499.218406	-1681285.192840	84-51-27	181-12-08	4.195
146-158	-201110.293	0.677	-46962.788	8.364	-31793.807476	-1682086.490652	85-53-14	181-01-47	4.197
146-159	-201109.992	0.511	-46958.602	8.382	-23995.845622	-1685703.952944	87-08-06	181-14-52	4.201
146-160	-201109.782	0.339	-46954.406	8.394	-15917.543634	-1688115.510108	88-14-24	181-06-18	4.200
146-161	-201109.653	0.150	-46950.208	5.492	-7042.531200	-1104494.214276	89-04-13	180-49-49	1.294

地 番 : 181街区

測点名	[1] X(i)	[2] X(i+1)-X(i-1)	[3] Y(i)	[4] Y(i+1)-Y(i-1)	[2]*[3]	[1]*[4]	方向角	夾 角	距 離
146-9	-201109.632	0.810	-46948.914	57.109	-38028.620340	-11485169.973888	89-11-24	180-07-11	55.821
146-1	-201108.843	15.405	-46893.099	69.448	-722388.190095	-13966606.928664	43-00-25	133-49-01	19.987
146-2	-201094.227	34.372	-46879.466	12.250	-1611341.005352	-2463404.280750	355-59-44	132-59-19	19.804
146-10	-201074.471	39.481	-46880.849	-3.100	-1850902.799369	623330.860100	355-01-30	179-01-46	19.800
146-11	-201054.746	39.424	-46882.566	-3.755	-1848298.281984	754960.571230	354-05-36	179-04-06	19.804
146-12	-201035.047	39.341	-46884.604	-4.403	-1844487.205964	885157.311941	353-08-04	179-02-28	19.784
146-13	-201015.405	39.255	-46886.969	-5.081	-1840547.968095	1021359.272805	352-06-57	178-58-53	19.800
146-14	-200995.792	33.590	-46889.685	-4.873	-1575024.519150	979452.494416	351-13-37	179-06-40	14.142
H1023	-200981.815	10.691	-46891.842	-22.714	-501325.606465	4565089.690928	260-55-06	89-41-29	20.818
H1022	-200985.101	-2.576	-46912.399	-54.184	120831.656099	10890239.213261	271-12-36	190-17-30	33.635
A140	-200984.391	1.153	-46946.026	-54.622	-54129.519473	10978215.614515	271-12-30	179-59-54	21.000
F191	-200983.948	1.723	-46967.021	-22.508	-80908.913201	4523842.970172	310-13-01	219-00-31	1.982
F192	-200982.668	4.302	-46968.535	-4.933	-202075.169591	991476.442807	311-28-23	181-15-22	4.564
F193	-200979.646	29.432	-46971.954	-27.789	-1382475.835114	5585029.197960	317-18-02	185-49-39	35.935
F194	-200953.236	29.328	-46996.324	-28.198	-1378300.148592	5666467.092554	307-19-04	170-01-02	4.814
F195	-200950.318	9.382	-47000.152	-15.662	-440964.922506	3147330.094359	298-38-39	171-19-35	13.484
合計				倍面積	30156.746417	-30156.746417			543.607
				面 積	15078.3732083	15078.3732083			
				坪 数	4561.20	4561.20			

地番 182-1	土地の所在 山形市大字松原
	縮尺 S=1:250



凡 例	
田	コンクリート杭
☒	金属標
○	無標

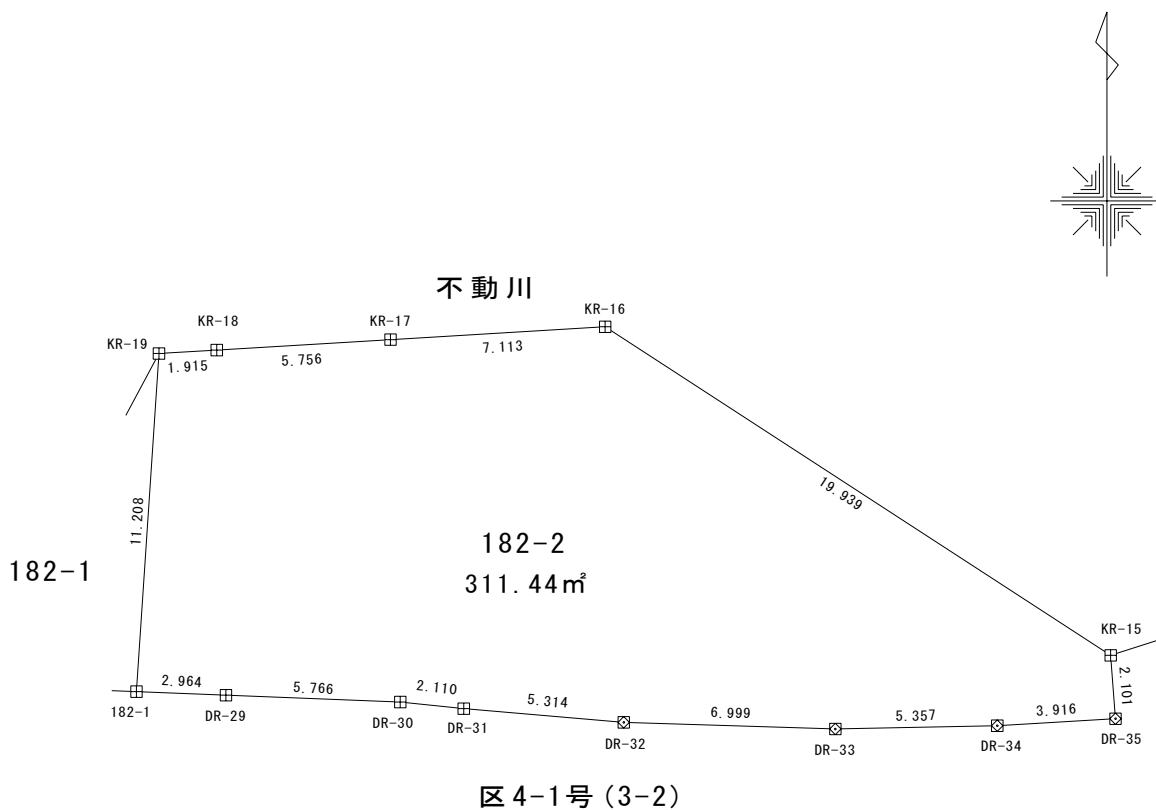
地番	182-1			
測点	Xn	Yn	(Xn+1 - Xn-1) Yn	距離
KR-19	-200733.327	-47048.817	-324354.544398	4.861
KR-20	-200737.616	-47051.105	316842.141070	5.106
KR-21	-200740.061	-47055.587	229913.598082	2.443
KR-22	-200742.502	-47055.687	197445.662652	1.756
DR-28	-200744.257	-47055.758	94487.962064	6.203
182-1	-200744.510	-47049.560	-514251.690800	11.208
	倍面積		83.128670	
	面積		41.5643350	
	地積		41.56	m ²

使用機種 ; W i n g n e o 測量計算システム
 計算式 ; 面積 = $\sum \{ (X_{n+1} - X_{n-1}) Y_n \} / 2 \quad n=1, 2, 3, \dots, N$

地番 182-2

土地の所在 山形市大字松原

縮尺 S=1:250



凡 例	
田	コンクリート杭
⊗	金属標
○	無 標

地番	182-2			
測点	Xn	Yn	(Xn+1 - Xn-1) Yn	距離
KR-16	-200732.444	-47034.059	-491176.678137	7.113
KR-17	-200732.869	-47041.159	36127.610112	5.756
KR-18	-200733.212	-47046.905	21547.482490	1.915
KR-19	-200733.327	-47048.817	531557.534466	11.208
182-1	-200744.510	-47049.560	531848.226240	2.964
DR-29	-200744.631	-47046.598	16278.122908	5.766
DR-30	-200744.856	-47040.836	20745.008676	2.110
DR-31	-200745.072	-47038.737	31562.992527	5.314
DR-32	-200745.527	-47033.443	31794.607468	6.999
DR-33	-200745.748	-47026.447	5266.962064	5.357
DR-34	-200745.639	-47021.091	-16034.192031	3.916
DR-35	-200745.407	-47017.182	-109408.982514	2.101
KR-15	-200743.312	-47017.342	-609485.804346	19.939
		倍面積	622.889923	
		面積	311.4449615	
		地積	311.44	m ²

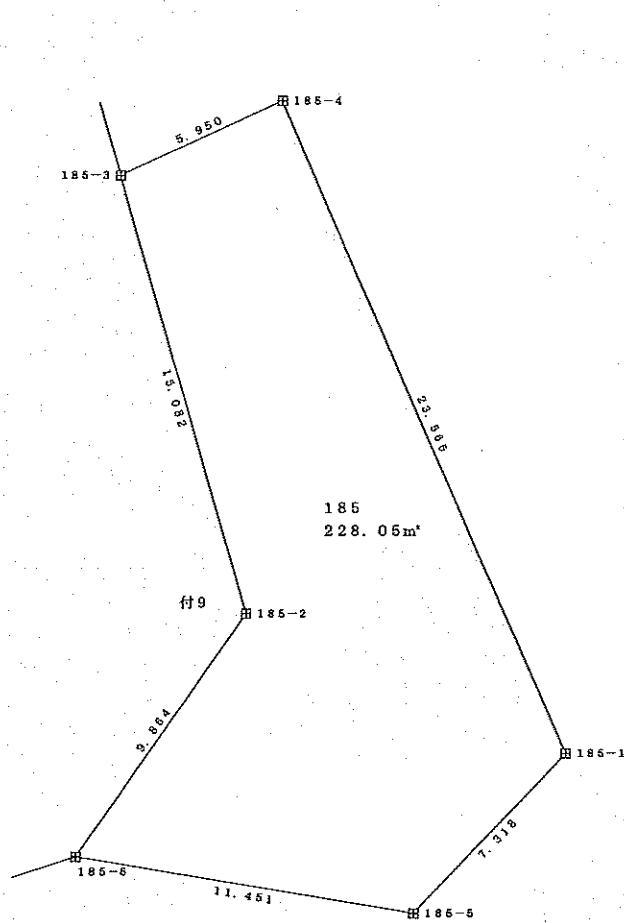
使用機種 ; W i n g n e o 測量計算システム

計算式 ; 面積 = $\sum \{ (X_{n+1} - X_{n-1}) Y_n \} / 2$ n=1, 2, 3, . . . , N

地 番 185

土地の所在 山形市大字松原

縮尺 S=1:250



凡 例	
田	コンクリート杭
☒	金 属 標
○	無 標

地 番 測 点	185街区				
	X	Y	X-X	Y (X-X)	辺 長
185-1	-200319.038	-47049.980	26.872	-1264347.809612	23.565
185-4	-200297.481	-47059.499	19.087	-898209.838976	5.950
185-3	-200299.951	-47064.912	-16.932	796894.719998	15.082
185-2	-200314.413	-47060.632	-22.530	1060297.069880	9.864
185-6	-200322.482	-47066.306	-9.941	467868.212343	11.451
185-5	-200324.354	-47055.009	3.444	-162046.252034	7.318
			倍面積	456.101597	
			面積	228.050798	
			地積	228.05 m²	

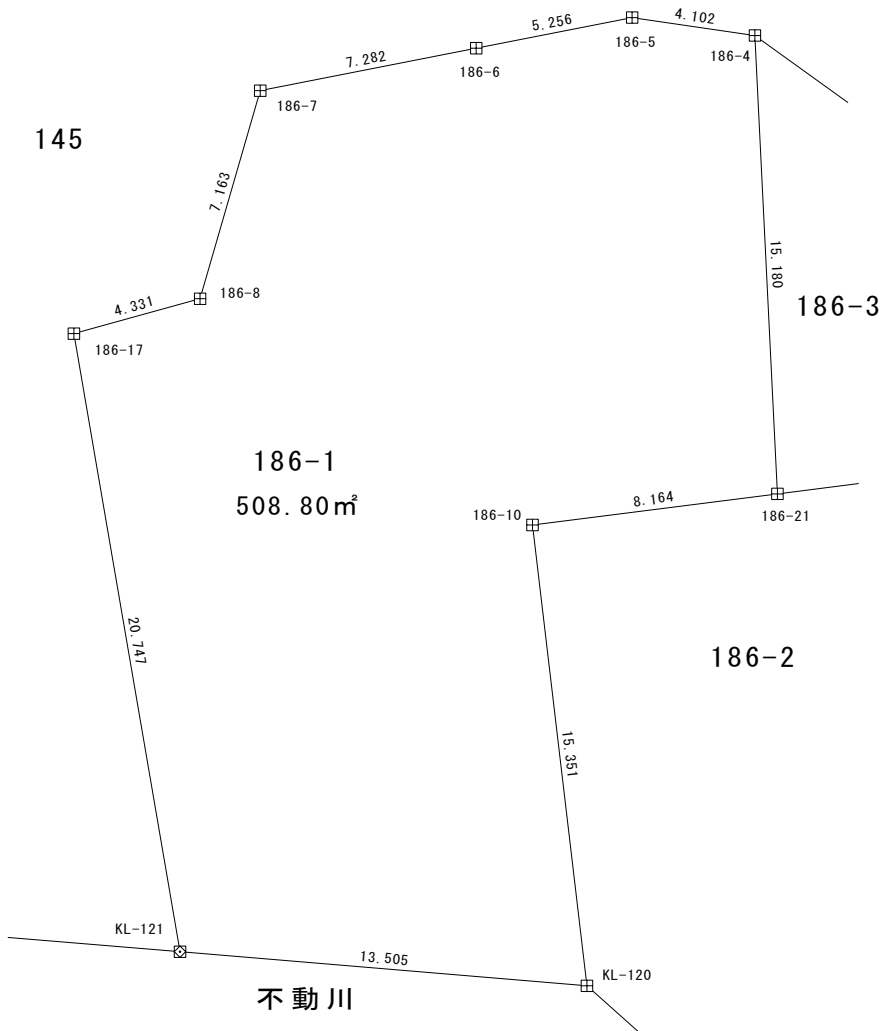
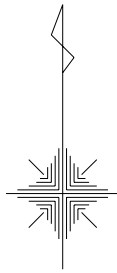
使用機種:UD Mercury-Win 測量計算システム

計算式:面積=Σ{Y_i(X_{i+1}-X_{i-1})} / 2 i=1, 2, 3, ..., N

地 番 186-1

土地の所在 山形市大字松原

縮尺 S=1:250



凡 例	
田	コンクリート杭
⊠	金属標
○	無 標

地 番	186-1			
測 点	Xn	Yn	(Xn+1 - Xn-1) Yn	距 離
186-4	-200679.641	-47033.723	-740969.272142	4.102
186-5	-200679.049	-47037.782	19802.906222	5.256
186-6	-200680.062	-47042.939	113702.783563	7.282
186-7	-200681.466	-47050.084	389856.996024	7.163
186-8	-200688.348	-47052.070	378063.382450	4.331
186-17	-200689.501	-47056.245	1016461.948245	20.747
KL-121	-200709.949	-47052.736	1015162.779200	13.505
KL-120	-200711.076	-47039.278	-664100.526804	15.351
186-10	-200695.831	-47041.078	-765499.462294	8.164
186-21	-200694.803	-47032.979	-761463.930010	15.180
		倍 面 積	1017.604454	
		面 積	508.802270	
		地 積	508.80 m ²	

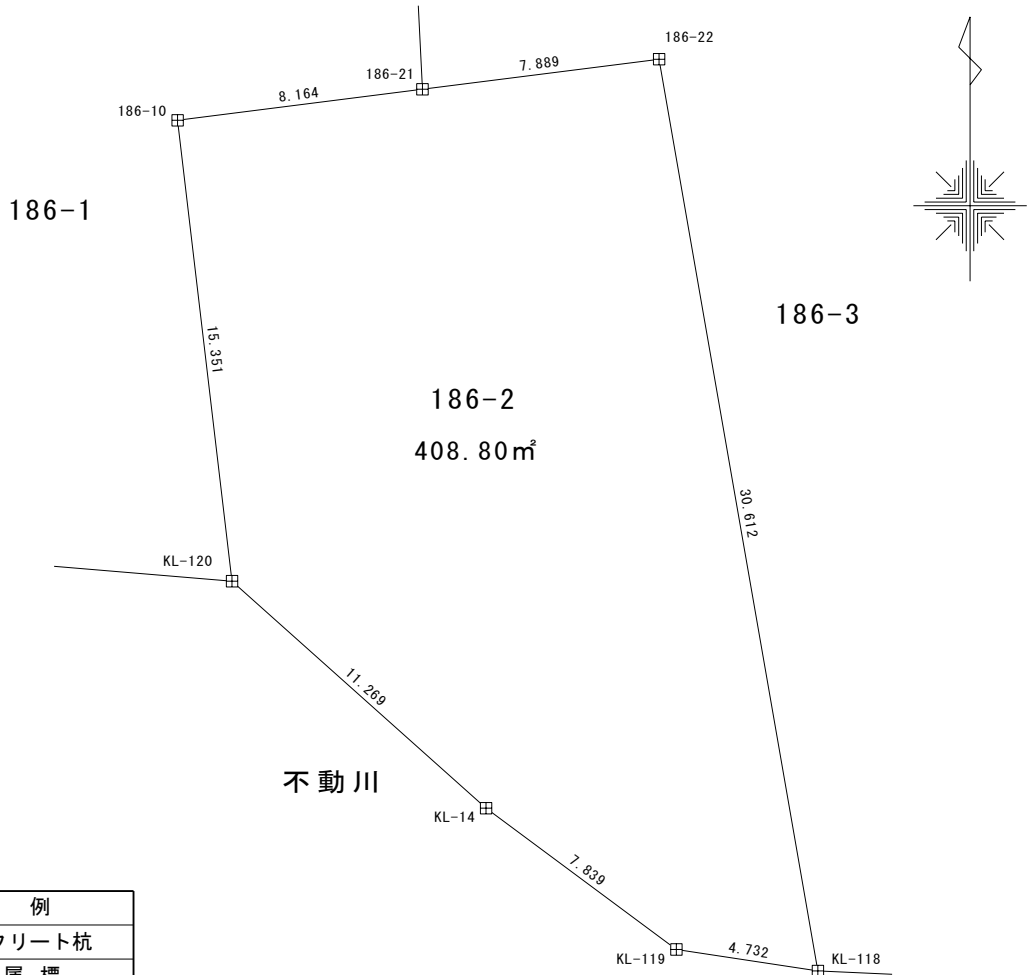
使用機種 ; W i n g n e o 測量計算システム

計算式 ; 面積 = $\sum \{ (X_{n+1} - X_{n-1}) Y_n \} / 2 \quad n=1, 2, 3, \dots, N$

地番 186-2

土地の所在 山形市大字松原

縮尺 S=1:250



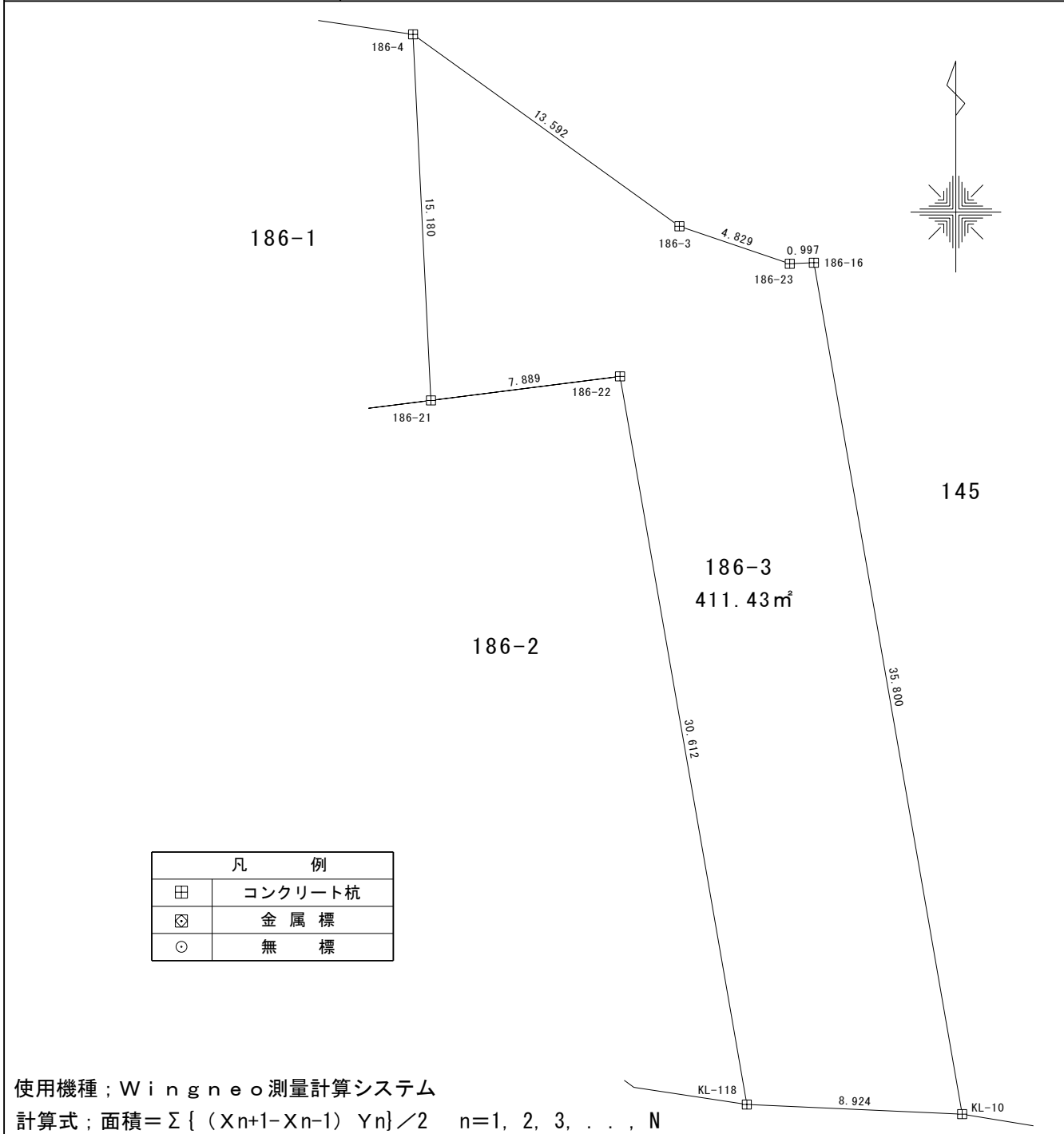
凡 例	
田	コンクリート杭
⊗	金属標
○	無標

地番	186-2			
測点	Xn	Yn	(Xn+1 - Xn-1)Yn	距離
186-22	-200693.809	-47025.153	-1371441.562092	7.889
186-21	-200694.803	-47032.979	95100.683538	8.164
186-10	-200695.831	-47041.078	765499.462294	15.351
KL-120	-200711.076	-47039.278	1070284.692334	11.269
KL-14	-200718.584	-47030.874	572930.107068	7.839
KL-119	-200723.258	-47024.581	253133.319523	4.732
KL-118	-200723.967	-47019.902	-1384689.093998	30.612
		倍面積	817.608667	
		面積	408.8043335	
		地積	408.80 m ²	

使用機種 ; W i n g n e o 測量計算システム

計算式 ; 面積 = $\sum \{ (X_{n+1} - X_{n-1}) Y_n \} / 2 \quad n=1, 2, 3, \dots, N$

地番 186-3	土地の所在 山形市大字松原
	縮尺 S=1:250



凡 例	
田	コンクリート杭
⊠	金属標
○	無標

使用機種 ; Wingneo 測量計算システム

計算式 ; 面積 = $\sum \{ (X_{n+1} - X_{n-1}) Y_n \} / 2 \quad n=1, 2, 3, \dots, N$

地番	186-3			
測点	Xn	Yn	(Xn+1 - Xn-1) Yn	距離
KL-10	-200724.366	-47010.987	-1639273.116690	35.800
186-16	-200689.097	-47017.128	-1656131.316672	0.997
186-23	-200689.142	-47018.124	-70997.367240	4.829
186-3	-200687.587	-47022.696	-446762.634696	13.592
186-4	-200679.641	-47033.723	339395.345168	15.180
186-21	-200694.803	-47032.979	666363.246472	7.889
186-22	-200693.809	-47025.153	1371441.562092	30.612
KL-118	-200723.967	-47019.902	1436787.145414	8.924
		倍面積	822.863848	
		面積	411.4319240	
		地積	411.43 m²	

不動川

座 標 求 積 表

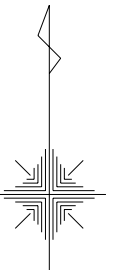
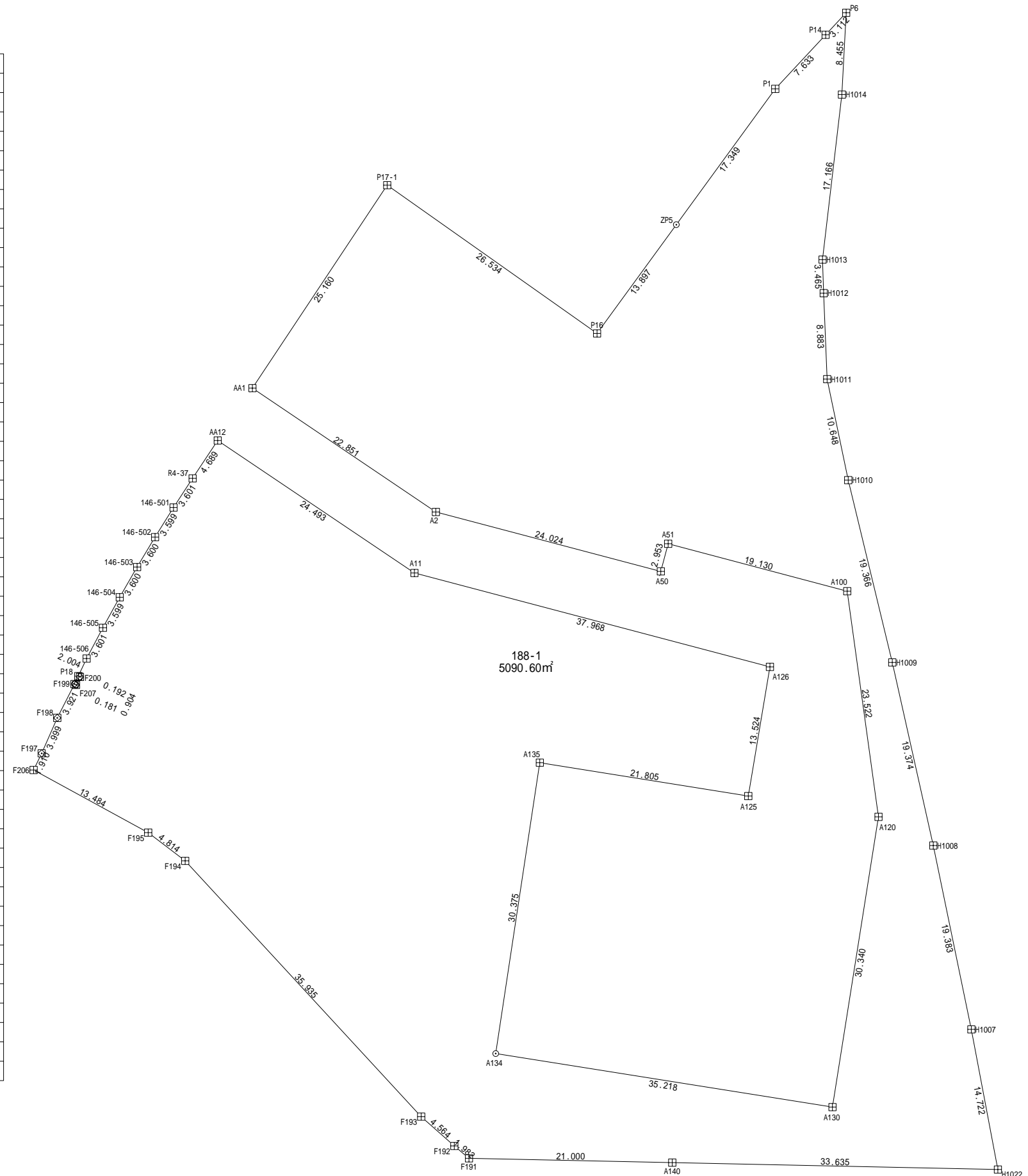
地 番 : 187街区

測点名	Xn	Yn	(Xn+1-Xn-1)Yn	距 離
190-1	-200871.904	-46967.803	1263927.85210447	27.159
ZP5	-200887.555	-46945.607	76518.72915039	17.349
P1	-200873.534	-46935.389	-920143.09274657	7.633
P14	-200867.950	-46930.184	-368873.03287248	3.112
P6	-200865.674	-46928.063	-157263.30573646	1.076
H1015	-200864.599	-46928.006	-564068.02082432	10.951
H1016	-200853.654	-46927.665	-695943.60062985	3.942
H1017	-200849.769	-46928.331	-979982.09804944	17.138
H1018	-200832.771	-46926.141	-806941.40499872	0.700
H1019	-200832.573	-46925.469	-502768.62841814	10.977
146-23	-200822.057	-46928.617	-1380113.04455694	19.800
146-24	-200803.164	-46934.542	-1099347.77726600	4.764
146-532	-200798.634	-46936.016	-674086.51849836	9.975
146-530	-200788.802	-46937.701	-258879.36430401	27.482
18701	-200793.119	-46964.841	250686.07763203	3.028
18702	-200794.140	-46967.692	112613.76328525	1.392
18703	-200795.516	-46967.900	70321.07371005	0.780
18704	-200795.637	-46967.129	139017.27683336	6.261
18705	-200798.476	-46972.709	405715.97758078	6.127
18706	-200804.274	-46974.688	544724.75073662	5.866
18707	-200810.072	-46973.798	495271.29827682	5.854
18708	-200814.818	-46970.370	472526.28030845	8.971
18709	-200820.132	-46963.142	554749.00415058	7.828
18710	-200826.630	-46958.777	371255.20337462	1.482
18711	-200828.038	-46958.315	108222.20506909	0.987
18712	-200828.935	-46957.902	127096.74269470	2.185
18713	-200830.745	-46956.677	394138.84461954	6.874
18714	-200837.329	-46954.701	553355.80977642	5.206
18715	-200842.530	-46954.477	337265.46242797	2.052
18716	-200844.512	-46955.010	105372.13239974	0.263
146-473	-200844.774	-46955.022	40027.37971174	0.592
146-474	-200845.364	-46955.066	55641.75321000	0.597
146-475	-200845.959	-46955.117	55547.90341100	0.591
146-476	-200846.547	-46955.181	55547.97912300	0.599
146-477	-200847.142	-46955.252	55735.88412400	0.598
146-478	-200847.734	-46955.339	55642.07671500	0.600
146-479	-200848.327	-46955.428	55360.44961200	0.596
146-480	-200848.913	-46955.534	55454.48565400	0.606
146-481	-200849.508	-46955.650	55454.62265000	0.600
146-482	-200850.094	-46955.781	55079.13111300	0.605
146-483	-200850.681	-46955.928	54797.56797600	0.598
146-484	-200851.261	-46956.074	55079.47480200	0.614
146-485	-200851.854	-46956.234	54797.92507800	0.602
146-486	-200852.428	-46956.414	53765.09403000	0.599
146-487	-200852.999	-46956.596	53483.56284400	0.602
合 計		倍面積	5862.10744585	257.659
		面 積	2931.05372292	

地 番 : 187街区

測点名	Xn	Yn	(Xn+1-Xn-1)Yn	距 離
146-488	-200853.567	-46956.794	53014.22042600	0.598
146-489	-200854.128	-46957.000	52779.66800000	0.601
146-490	-200854.691	-46957.210	52169.46031000	0.593
146-491	-200855.239	-46957.436	51794.05190800	0.603
146-492	-200855.794	-46957.672	51653.43920000	0.598
146-493	-200856.339	-46957.918	51137.17270200	0.604
146-494	-200856.883	-46958.180	50714.83440000	0.599
146-495	-200857.419	-46958.448	49822.91332800	0.590
146-496	-200857.944	-46958.718	49682.32364400	0.607
146-497	-200858.477	-46959.009	49870.46755800	0.606
146-498	-200859.006	-46959.304	49072.47268000	0.596
146-499	-200859.522	-46959.603	48274.47188400	0.603
146-500	-200860.034	-46959.921	52689.03136200	0.730
R4-35	-200860.644	-46960.322	557403.69476050	13.518
合 計		倍面積 面 積	5862.10744585 2931.05372292	257.659

地番	188-1			
測点	X _n	Y _n	(X _{n+1} - X _{n-1}) Y _n	距離
AA12	-200909.836	-46992.970	-459271.83642864	4.689
R4-37	-200913.742	-46995.564	325365.51551856	3.601
146-501	-200916.759	-46997.528	285231.71152335	3.599
146-502	-200919.811	-46999.437	288465.24812651	3.600
146-503	-200922.897	-47001.291	291697.57966896	3.600
146-504	-200926.017	-47003.088	294739.34993707	3.599
146-505	-200929.167	-47004.828	297744.46722104	3.601
146-506	-200932.351	-47006.510	234742.28593934	2.004
P18	-200934.161	-47007.370	89026.27138442	0.192
F200	-200934.245	-47007.197	42101.33803021	0.904
F207	-200935.057	-47007.595	34667.86634753	0.181
F199	-200934.983	-47007.760	160720.84739743	3.921
F198	-200938.476	-47009.540	336264.12927739	3.999
F197	-200942.136	-47011.152	252821.03922588	1.910
F206	-200943.854	-47011.986	384652.77503270	13.484
F195	-200950.318	-47000.152	440964.92250592	4.814
F194	-200953.236	-46996.324	1378300.14859225	35.935
F193	-200979.646	-46971.954	1382475.83511402	4.564
F192	-200982.668	-46968.535	202075.16959082	1.982
F191	-200983.948	-46967.021	80908.91320092	21.000
A140	-200984.391	-46946.026	54129.51947300	33.635
H1022	-200985.101	-46912.399	-645276.29448280	14.722
H1007	-200970.636	-46915.139	-1569132.55194954	19.383
H1008	-200951.655	-46919.065	-1777528.95425249	19.374
H1009	-200932.751	-46923.305	-1770275.88765336	19.366
H1010	-200913.928	-46927.857	-1372479.13588742	10.648
H1011	-200903.504	-46930.031	-905700.56438807	8.883
H1012	-200894.629	-46930.389	-579040.22689139	3.465
H1013	-200891.166	-46930.507	-962632.97622796	17.166
H1014	-200874.117	-46928.503	-1196316.79438997	8.455
P6	-200865.674	-46928.063	-289396.39926908	3.112
P14	-200867.950	-46930.184	368873.03287248	7.633
P1	-200873.534	-46935.389	920143.09274657	17.349
ZP5	-200887.555	-46945.607	1185446.20305892	13.897
P16	-200898.785	-46953.792	-191515.73818828	26.534
P17-1	-200883.476	-46975.464	265389.52672679	25.160
AA1	-200904.435	-46989.383	1585415.29754774	22.851
A2	-200917.216	-46970.441	888326.86340570	24.024
A50	-200923.347	-46947.212	153898.78374415	2.953
A51	-200920.494	-46946.451	95986.85371362	19.130
A100	-200925.392	-46927.958	590470.29195205	23.522
A120	-200948.691	-46924.727	2138862.22243212	30.340
A130	-200978.657	-46929.478	1146899.65774937	35.218
A134	-200973.130	-46964.259	-1670007.16588621	30.375
A135	-200943.098	-46959.707	-1248509.23503448	21.805
A125	-200946.543	-46938.176	-464347.35832223	13.524
A126	-200933.205	-46935.942	-1080847.53550659	37.968
A11	-200923.515	-46972.653	-1097710.45224824	24.493
倍面積			10181.20695485	
面積			5090.60347742	
地積			5090.60	m ²



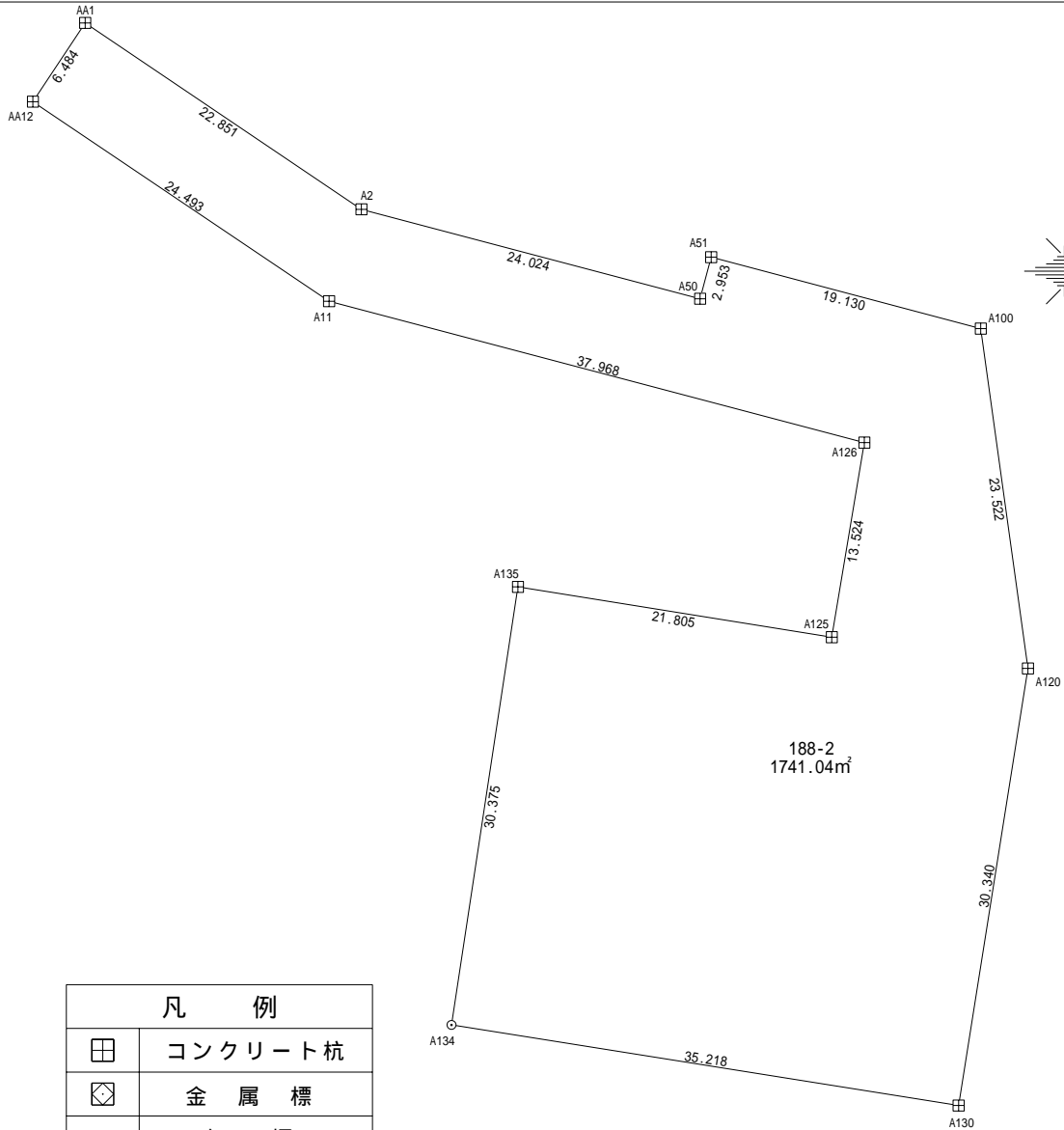
凡例	
⊠	コンクリート杭
⊞	金属標
○	無標

使用機種 ; アイサンテクノロジー株式会社 Wingneo 測量計算システム
 計算式 ; 面積 = {Y_i (X_{i+1} - X_{i-1})} / 2 i = 1, 2, 3, ... , N

地番 188-2

土地の所在 山形市大字松原

縮尺 S = 1 : 250



凡 例	
⊠	コンクリート杭
⊠	金 属 標
○	無 標

地 番	188-2			
測 点	X n	Y n	(X n + 1 - X n - 1) Y n	距 離
AA12	-200909.836	-46992.970	896634.98627776	24.493
A11	-200923.515	-46972.653	1097710.45224824	37.968
A126	-200933.205	-46935.942	1080847.53550659	13.524
A125	-200946.543	-46938.176	464347.35832223	21.805
A135	-200943.098	-46959.707	1248509.23503448	30.375
A134	-200973.130	-46964.259	1670007.16588621	35.218
A130	-200978.657	-46929.478	-1146899.65774937	30.340
A120	-200948.691	-46924.727	-2499453.84485715	23.522
A100	-200925.392	-46927.958	-1323242.22443171	19.130
A51	-200920.494	-46946.451	-95986.85371362	2.953
A50	-200923.347	-46947.212	-153898.78374415	24.024
A2	-200917.216	-46970.441	-888326.86340570	22.851
AA1	-200904.435	-46989.383	-346766.42190611	6.484
		倍 面 積	3482.08346771	
		面 積	1741.04173385	
		地 積	1741.04	m ²

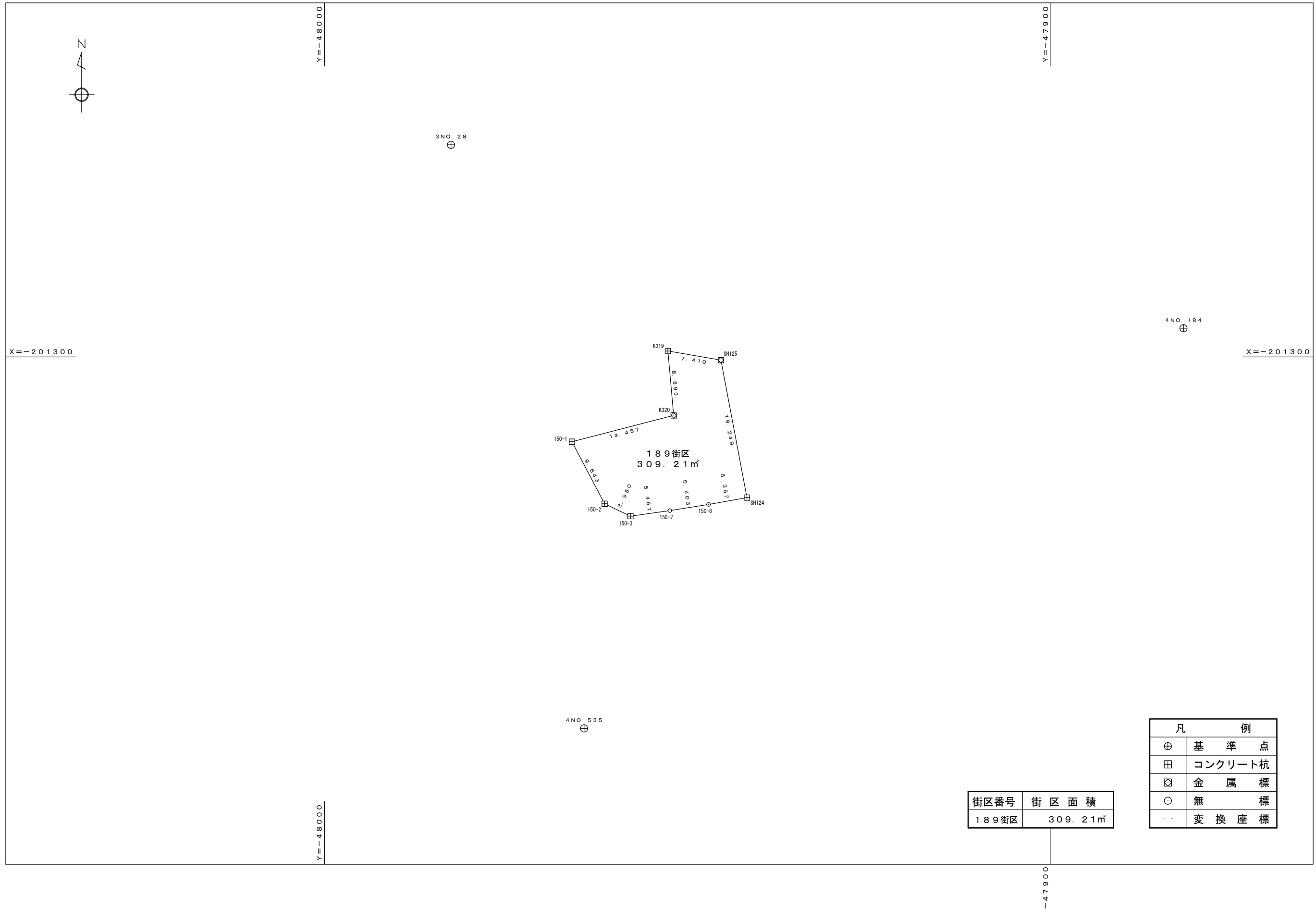
使用機種 ; アイサンテクノロジー株式会社 Wingneo 測量計算システム
 計算式 ; 面積 = { Yi (Xi+1 - Xi - 1) } / 2 i = 1, 2, 3, ... , N

街区別街区確定測量原図 (189街区)

縮尺 1 : 500

平成二十二年三月

三協コンサルタント株式会社



街区番号	街区面積
189街区	309.21㎡

凡 例	
⊕	基準点
田	コンクリート杭
⊠	金属標
○	無標
...	変換座標

独立行政法人都市再生機構 山形都市開発事務所

座標面積計算書

現場名：平成21年度 山形新都市街区点及び画地点測設測量業務（世界測地系）

地番No： 164 地番名： 189街区

点名	Xn	Yn	距離	方向角	測角	X _{n+1} -X _{n-1}	Y _{n+1} -Y _{n-1}	Y _n *(X _{n+1} -X _{n-1})	X _n *(Y _{n+1} -Y _{n-1})
SH124	-201319.346	-47941.841	19.249	349-17-48	89-27-43	19.862	1.708	-952208.823969	-343809.763998
SH125	-201300.431	-47945.416	7.410	279-41-30	110-23-42	20.162	-10.879	-966674.711156	2190040.363703
K319	-201299.184	-47952.721	8.893	174-52-48	75-11-18	-7.610	-6.511	364923.569046	1310614.506202
K320	-201308.041	-47951.927	14.457	255-30-40	260-37-52	-12.475	-13.203	598176.980378	2657964.843301
150-1	-201311.658	-47965.924	9.643	152-14-58	76-44-18	-12.151	-9.507	582814.815979	1913913.839179
150-2	-201320.192	-47961.434	3.950	115-38-44	143-23-46	-10.243	8.050	491271.748481	-1620718.232658
150-3	-201321.901	-47957.874	5.467	81-56-29	146-17-45	-0.943	8.973	45228.004647	-1806504.521555
150-7	-201321.135	-47952.461	5.403	81-02-04	179-05-35	1.608	10.750	-77124.428357	-2164127.375160
150-8	-201320.293	-47947.124	5.367	79-50-05	178-48-01	1.789	10.620	-85788.723842	-2137992.090220

倍面積	-618.431206
面積	309.2156030
地積	309.21

