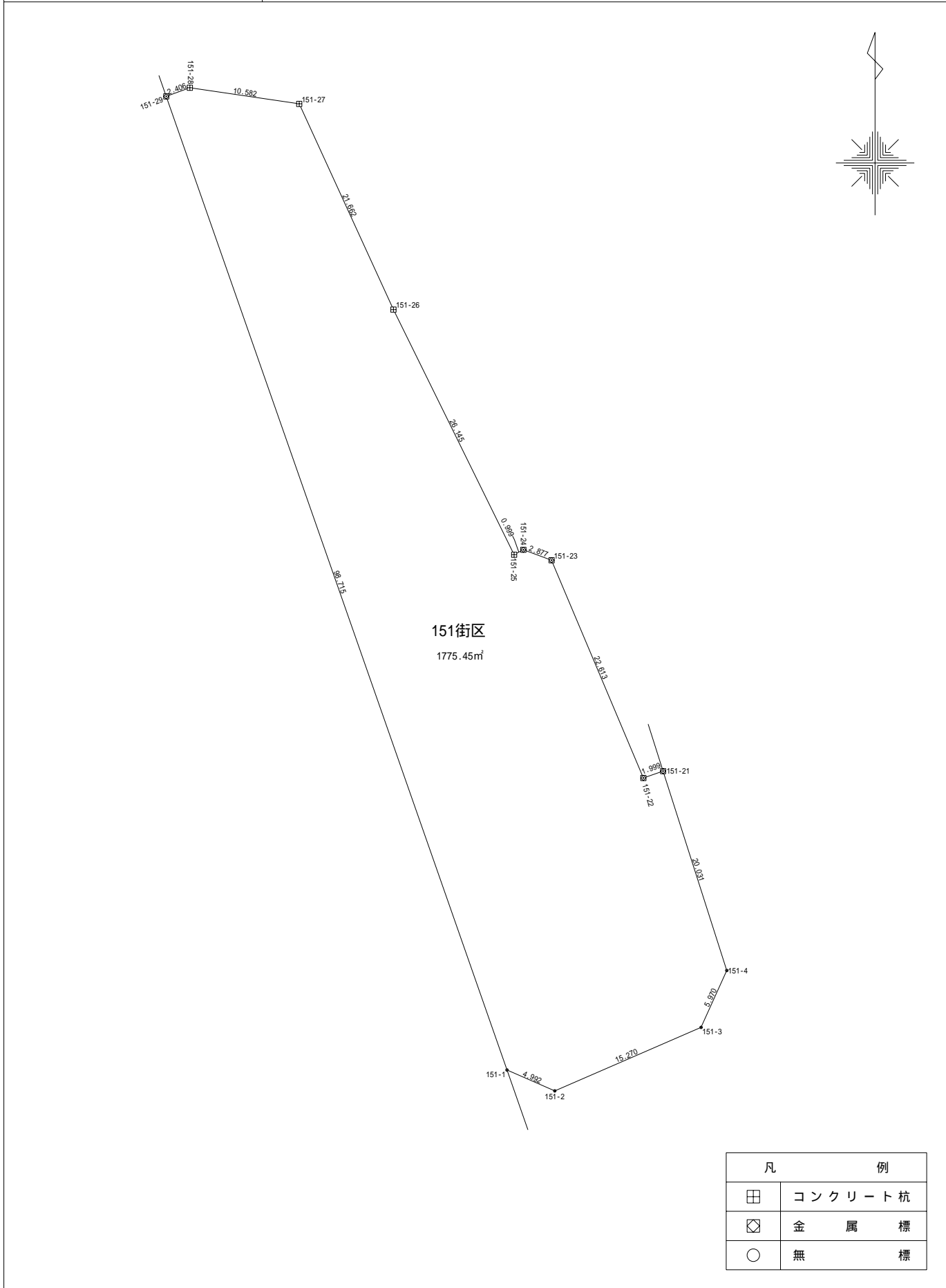


地番	151	土地の所在	山形市大字松原
		縮尺 S = 1 : 500	



地番 151	土地の所在 山形市大字松原
	縮尺 S = 1 : 500

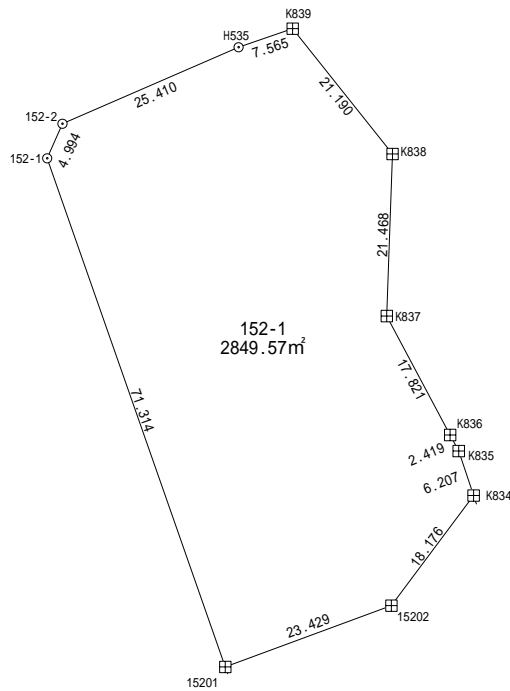
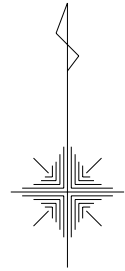
地番	151街区			
測点	Xn	Yn	(Xn+1 - Xn-1)Yn	距離
151-1	-200418.675	-47034.923	4476290.311402	4.992
151-2	-200420.677	-47030.350	-191883.828000	15.270
151-3	-200414.595	-47016.343	-541628.271360	5.970
151-4	-200409.157	-47013.880	-1152686.309840	20.031
151-21	-200390.077	-47019.978	-866754.272603	1.999
151-22	-200390.723	-47021.870	-949287.507061	22.613
151-23	-200369.889	-47030.659	-1026784.107054	2.877
151-24	-200368.891	-47033.358	-24656.055629	0.999
151-25	-200369.365	-47034.238	-1080801.958704	26.145
151-26	-200345.912	-47045.793	-2029738.278868	21.662
151-27	-200326.221	-47054.820	-999039.097146	10.582
151-28	-200324.681	-47065.290	-33566.124265	2.406
151-29	-200325.507	-47067.550	4424086.409751	98.715
		倍面積	3550.910623	
		面積	1775.45531174	
		地積	1775.45	m ²

使用機種：アイソテック株式会社製 Wingneo 測量計算システム
 計算式：面積 = $Y_n \{ (X_{n+1}) - (X_{n-1}) \} / 2$ $n=1,2,3,\dots,N$

地 番 152-1

土地の所在 山形市大字松原

縮尺 S = 1 : 1 0 0 0



凡 例	
⊠	コンクリート杭
⊞	金属標
○	無 標

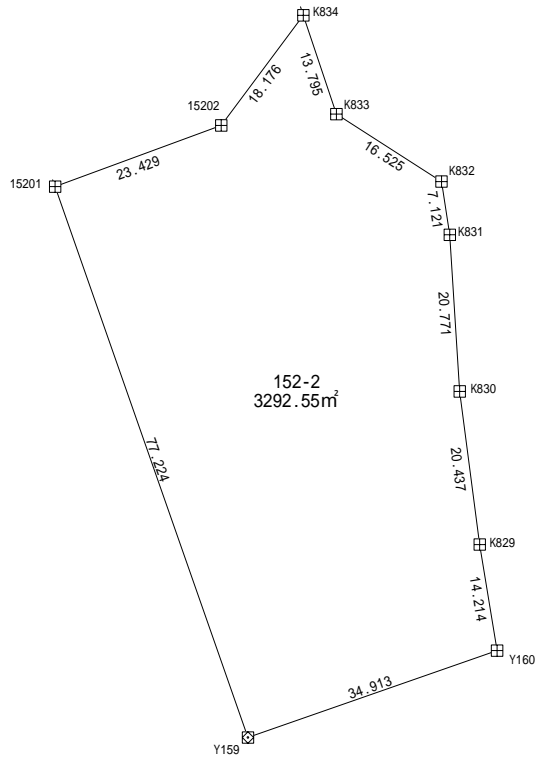
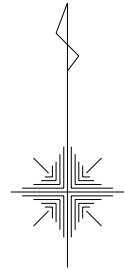
地 番	152-1			
測 点	X n	Y n	(X n + 1 - X n - 1) Y n	距 離
K834	-200475.660	-46974.192	-961041.67133785	6.207
K835	-200469.770	-46976.154	-376928.19865061	2.419
K836	-200467.636	-46977.292	-839007.27718132	17.821
K837	-200451.911	-46985.677	-1746919.36134238	21.468
K838	-200430.456	-46984.919	-1786593.10160463	21.190
K839	-200413.886	-46998.126	-663340.90341661	7.565
H535	-200416.342	-47005.281	590911.58376184	25.410
152-2	-200426.457	-47028.591	690614.85883500	4.994
152-1	-200431.027	-47030.605	3380523.52343027	71.314
15201	-200498.336	-47007.042	2782930.77979824	23.429
15202	-200490.229	-46985.060	-1065451.07650116	18.176
	倍 面 積		5699.15579077	
	面 積		2849.57789538	
	地 積		2849.57	m ²

使用機種；アイサンテクノロジー株式会社 Wingneo 測量計算システム
 計算式；面積= {Yi (Xi+1-Xi-1)} / 2 i=1,2,3,・・・,N

地番 152-2

土地の所在 山形市大字松原

縮尺 S = 1 : 1000



凡 例	
⊕	コンクリート杭
⊗	金属標
○	無 標

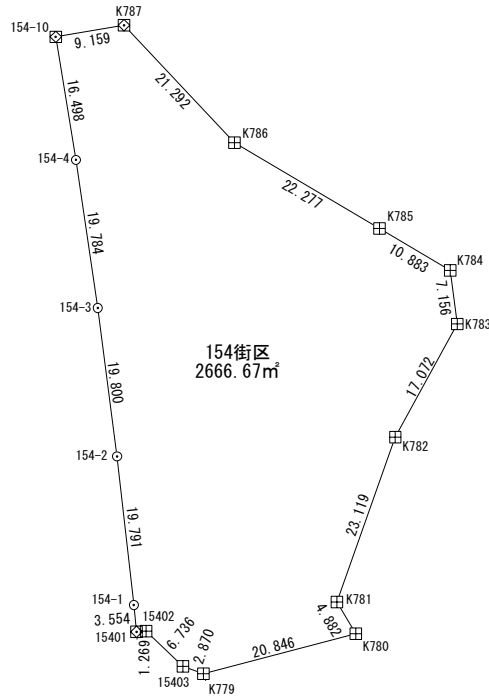
地番	152-2			
測点	X n	Y n	(X n + 1 - X n - 1) Y n	距 離
Y159	-200571.223	-46981.526	2884031.71209028	34.913
Y160	-200559.723	-46948.561	-1198429.78624151	14.214
K829	-200545.697	-46950.864	-1610052.00045018	20.437
K830	-200525.430	-46953.500	-1924844.59970088	20.771
K831	-200504.702	-46954.826	-1303736.27686890	7.121
K832	-200497.665	-46955.916	-749209.50123291	16.525
K833	-200488.746	-46969.828	-1033564.15503260	13.795
K834	-200475.660	-46974.192	69670.20139301	18.176
15202	-200490.229	-46985.060	1065451.07650116	23.429
15201	-200498.336	-47007.042	3807268.44923954	77.224
		倍 面 積	6585.11969699	
		面 積	3292.55984849	
		地 積	3292.55	m ²

使用機種 ; アイサンテクノロジー株式会社 Wingneo 測量計算システム
 計算式 ; 面積 = { Yi (Xi+1 - Xi-1) } / 2 i=1,2,3, ..., N

地 番 154

土地の所在 山形市大字松原

縮尺 S = 1 : 1000



凡 例	
□	コンクリート杭
⊠	金 属 標
○	無 標

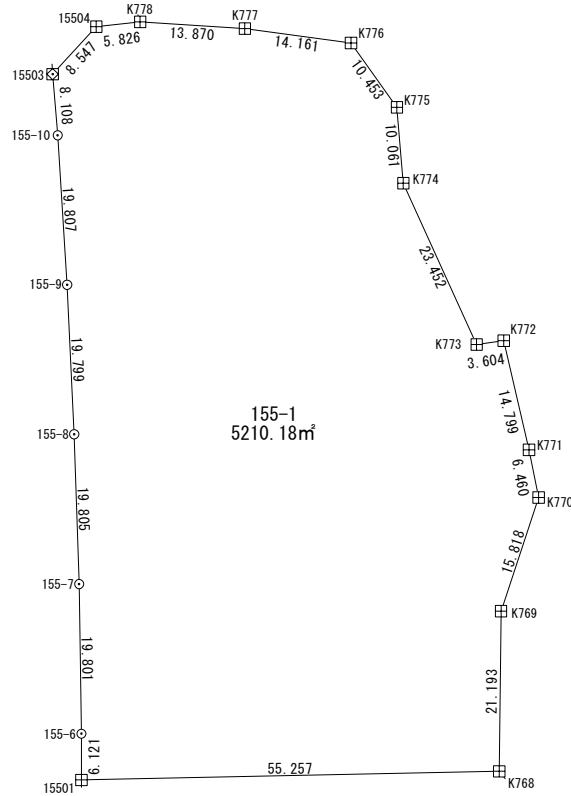
地 番		154街区		
測 点	X n	Y n	(X n + 1 - X n - 1) Y n	距 離
154-4	-200980.724	-46859.588	1680103.66815200	19.784
154-3	-201000.297	-46856.705	1837157.68964000	19.800
154-2	-201019.932	-46854.157	1841321.51594300	19.791
154-1	-201039.596	-46851.922	1087029.98190864	3.554
15401	-201043.133	-46851.579	161391.64940997	1.269
15402	-201043.041	-46850.313	213475.38298074	6.736
15403	-201047.690	-46845.439	263684.99470556	2.870
K779	-201048.670	-46842.742	-202167.78850010	20.846
K780	-201043.374	-46822.580	-444014.05851913	4.882
K781	-201039.187	-46825.090	-1216403.83814392	23.119
K782	-201017.396	-46817.365	-1721340.01156227	17.072
K783	-201002.420	-46809.172	-1033161.57778404	7.156
K784	-200995.325	-46810.105	-591655.07657788	10.883
K785	-200989.780	-46819.470	-790730.13281439	22.277
K786	-200978.436	-46838.642	-1258161.36401103	21.292
K787	-200962.918	-46853.222	-655605.53984365	9.159
154-10	-200964.443	-46862.253	834407.86086837	16.498
			倍 面 積	5333.35585186
			面 積	2666.67792593
			地 積	2666.67 m ²

使用機種 ; アイサンテクノロジー株式会社 Wingneo 測量計算システム
 計算式 ; 面積 = $\sum \{ Y_i (X_{i+1} - X_{i-1}) \} / 2 \quad i=1, 2, 3, \dots, N$

地 番 155-1

土地の所在 山形市大字松原

縮尺 S = 1 : 1000



凡 例	
□	コンクリート杭
⊗	金 属 標
○	無 標

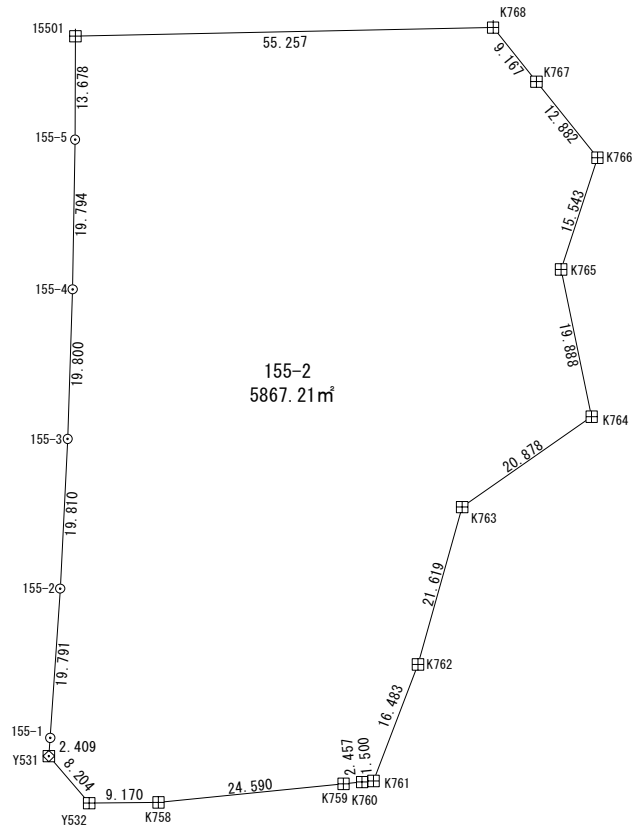
地 番		155-1		
測 点	X n	Y n	(X n + 1 - X n - 1) Y n	距 離
15501	-201164.293	-46845.252	233203.02577394	55.257
K768	-201163.150	-46790.006	-1045026.87547139	21.193
K769	-201141.958	-46789.772	-1693945.22381406	15.818
K770	-201126.947	-46784.786	-998659.14826564	6.460
K771	-201120.613	-46786.054	-970502.82003320	14.799
K772	-201106.203	-46789.428	-650582.29841992	3.604
K773	-201106.708	-46792.997	-975724.71126161	23.452
K774	-201085.351	-46802.686	-1468770.49505335	10.061
K775	-201075.326	-46803.536	-867519.86985679	10.453
K776	-201066.816	-46809.606	-486920.68269115	14.161
K777	-201064.924	-46823.640	-129772.27922353	13.870
K778	-201064.045	-46837.482	-12672.09373280	5.826
15504	-201064.653	-46843.276	323618.96059909	8.547
15503	-201070.953	-46849.051	673722.83209982	8.108
155-10	-201079.034	-46848.387	1304626.39592811	19.807
155-9	-201098.801	-46847.132	1852522.98780800	19.799
155-8	-201118.578	-46846.194	1853797.58896800	19.805
155-7	-201138.373	-46845.552	1854802.78588800	19.801
155-6	-201158.172	-46845.244	1214222.28307156	6.121
	倍 面 積		10420.36231304	
	面 積		5210.18115652	
	地 積		5210.18	m ²

使用機種 ; アイサンテクノロジー株式会社 Wingneo 測量計算システム
 計算式 ; 面積 = $\sum \{Y_i (X_{i+1} - X_{i-1})\} / 2 \quad i=1, 2, 3, \dots, N$

地 番 155-2

土地の所在 山形市大字松原

縮尺 S = 1 : 1000



凡 例	
⊕	コンクリート杭
⊗	金 属 標
○	無 標

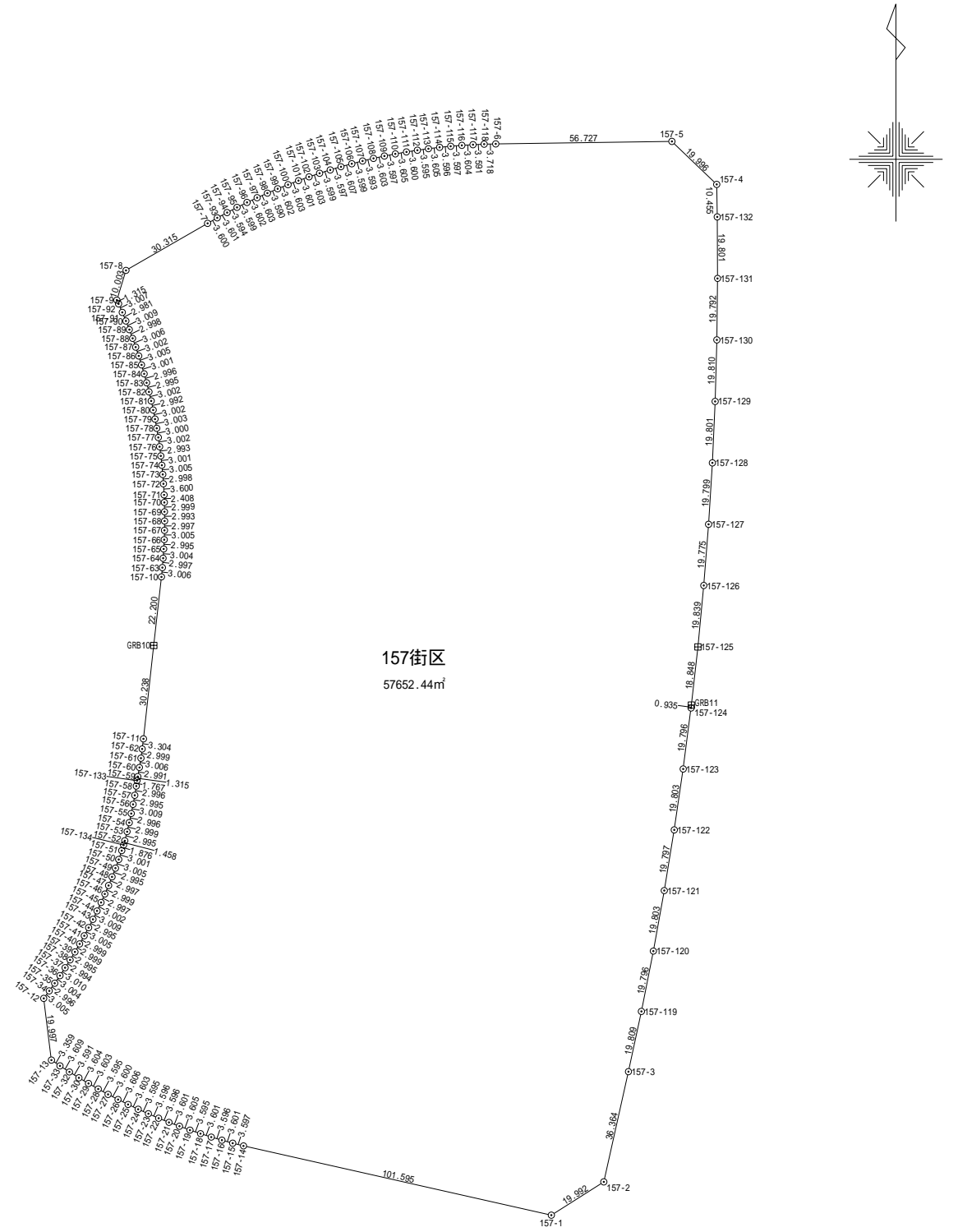
地 番		155-2		
測 点	X n	Y n	(X n + 1 - X n - 1) Y n	距 離
Y531	-201259.484	-46848.755	404398.45445721	8.204
Y532	-201265.715	-46843.418	286483.90871133	9.170
K758	-201265.600	-46834.249	-119197.93998651	24.590
K759	-201263.170	-46809.779	-125627.75795784	2.457
K760	-201262.916	-46807.336	-18838.73557740	1.500
K761	-201262.767	-46805.843	-727549.92324976	16.483
K762	-201247.372	-46799.954	-1694414.00787264	21.619
K763	-201226.562	-46794.095	-1533225.23439233	20.878
K764	-201214.607	-46776.979	-1470254.38844716	19.888
K765	-201195.131	-46781.006	-1602703.57980765	15.543
K766	-201180.347	-46776.207	-1161318.51904876	12.882
K767	-201170.304	-46784.274	-804553.02340408	9.167
K768	-201163.150	-46790.006	-281246.55468772	55.257
15501	-201164.293	-46845.252	694286.11320362	13.678
155-5	-201177.971	-46845.269	1567870.74957286	19.794
155-4	-201197.762	-46845.601	1854148.88758000	19.800
155-3	-201217.551	-46846.260	1853893.89324000	19.810
155-2	-201237.336	-46847.246	1851965.32887200	19.791
155-1	-201257.083	-46848.558	1037616.75011876	2.409
			倍 面 積	11734.42132391
			面 積	5867.21066195
			地 積	5867.21 m²

使用機種 ; アイサンテクノロジー株式会社 Wingneo 測量計算システム
 計算式 ; 面積 = $\sum \{Y_i (X_{i+1} - X_{i-1})\} / 2 \quad i=1, 2, 3, \dots, N$

地番	157街区			
測点	Xn	Yn	(Xn+1 - Xn-1)Yn	距離
157-1	-201472.390	-46930.753	543176.535222	19.992
157-2	-201461.697	-46913.861	-2166435.187119	36.364
157-3	-201426.211	-46905.917	-2572789.547450	19.809
157-119	-201406.847	-46901.743	-1818990.298769	19.796
157-120	-201387.428	-46897.896	-1824609.541776	19.803
157-121	-201367.941	-46894.374	-1830006.050976	19.797
157-122	-201348.404	-46891.178	-1834898.686318	19.803
157-123	-201328.810	-46888.307	-1839287.618689	19.796
157-124	-201309.177	-46885.770	-964081.798896	0.935
GRB11	-201308.248	-46885.665	-921725.292052	18.848
157-125	-201289.518	-46883.553	-1804015.640516	19.839
157-126	-201269.769	-46881.661	-1850137.869704	19.775
157-127	-201250.054	-46880.120	-1850639.617120	19.799
157-128	-201230.293	-46878.893	-1853685.187006	19.801
157-129	-201210.512	-46878.006	-1855572.111498	19.810
157-130	-201190.710	-46877.444	-1856018.640292	19.792
157-131	-201170.919	-46877.215	-1855962.696280	19.801
157-132	-201151.118	-46877.317	-1418226.348518	10.455
157-4	-201140.665	-46877.499	-1137904.410726	19.996
157-5	-201126.844	-46891.949	-611095.879368	56.727
157-6	-201127.633	-46948.671	41127.035796	3.718
157-118	-201127.720	-46952.388	11174.668344	3.591
157-117	-201127.871	-46955.976	17561.535024	3.604
157-116	-201128.094	-46959.573	24137.220522	3.597
157-115	-201128.385	-46963.158	30056.421120	3.596
157-114	-201128.734	-46966.737	37056.755493	3.605
157-113	-201129.174	-46970.315	43917.244525	3.595
157-112	-201129.669	-46973.876	49416.517552	3.600
157-111	-201130.226	-46977.433	55621.280672	3.605
157-110	-201130.853	-46980.983	61733.011662	3.597
157-109	-201131.540	-46984.514	68127.545300	3.603
157-108	-201132.303	-46988.035	74241.095300	3.593
157-107	-201133.120	-46991.534	80355.523140	3.599
157-106	-201134.013	-46995.020	87316.747160	3.607
157-105	-201134.978	-46998.495	93104.018595	3.597
157-104	-201135.994	-47001.946	98939.096330	3.599
157-103	-201137.083	-47005.376	105245.036864	3.603
157-102	-201138.233	-47008.791	111551.861043	3.601
157-101	-201139.456	-47012.178	117718.493712	3.603
157-100	-201140.737	-47015.546	123227.746066	3.602
157-99	-201142.077	-47018.890	128643.683040	3.590
157-98	-201143.473	-47022.198	134812.641666	3.603
157-97	-201144.944	-47025.487	141499.690383	3.602
157-96	-201146.482	-47028.744	146964.825000	3.599
157-95	-201148.069	-47031.974	152054.371942	3.594
157-94	-201149.715	-47035.169	157991.132671	3.601
157-93	-201151.428	-47038.337	164257.872804	3.600
157-7	-201153.207	-47041.467	1795706.414305	30.315
157-8	-201168.343	-47067.733	1162525.937367	10.003
157-9	-201177.906	-47070.668	506639.392867	1.315
157-92	-201179.106	-47070.130	186117.487053	3.007
157-91	-201181.860	-47068.924	259041.191649	2.981
157-90	-201184.610	-47067.773	261051.181276	3.009
157-89	-201187.406	-47066.663	263661.264172	2.998
157-88	-201190.212	-47065.607	265275.234034	3.006
157-87	-201193.043	-47064.597	267147.549552	3.002
157-86	-201195.888	-47063.638	268717.961206	3.005
157-85	-201198.752	-47062.729	270252.791699	3.001
157-84	-201201.630	-47061.879	271341.872987	2.996
157-83	-201204.518	-47061.079	272284.451778	2.995
157-82	-201207.416	-47060.322	273844.814224	3.002
157-81	-201210.337	-47059.628	274911.359960	2.992
157-80	-201213.258	-47058.979	275888.072792	3.002
157-79	-201216.200	-47058.381	277411.316965	3.003
157-78	-201219.153	-47057.837	278289.241167	3.000
157-77	-201222.113	-47057.348	279013.293199	3.002
157-76	-201225.082	-47056.903	279371.501862	2.993
157-75	-201228.050	-47056.519	279987.993097	3.001
157-74	-201231.032	-47056.185	281123.087614	3.005
157-73	-201234.024	-47055.908	281490.114673	2.998
157-72	-201237.014	-47055.680	309812.945429	3.600
157-71	-201240.608	-47055.471	282343.654860	2.408

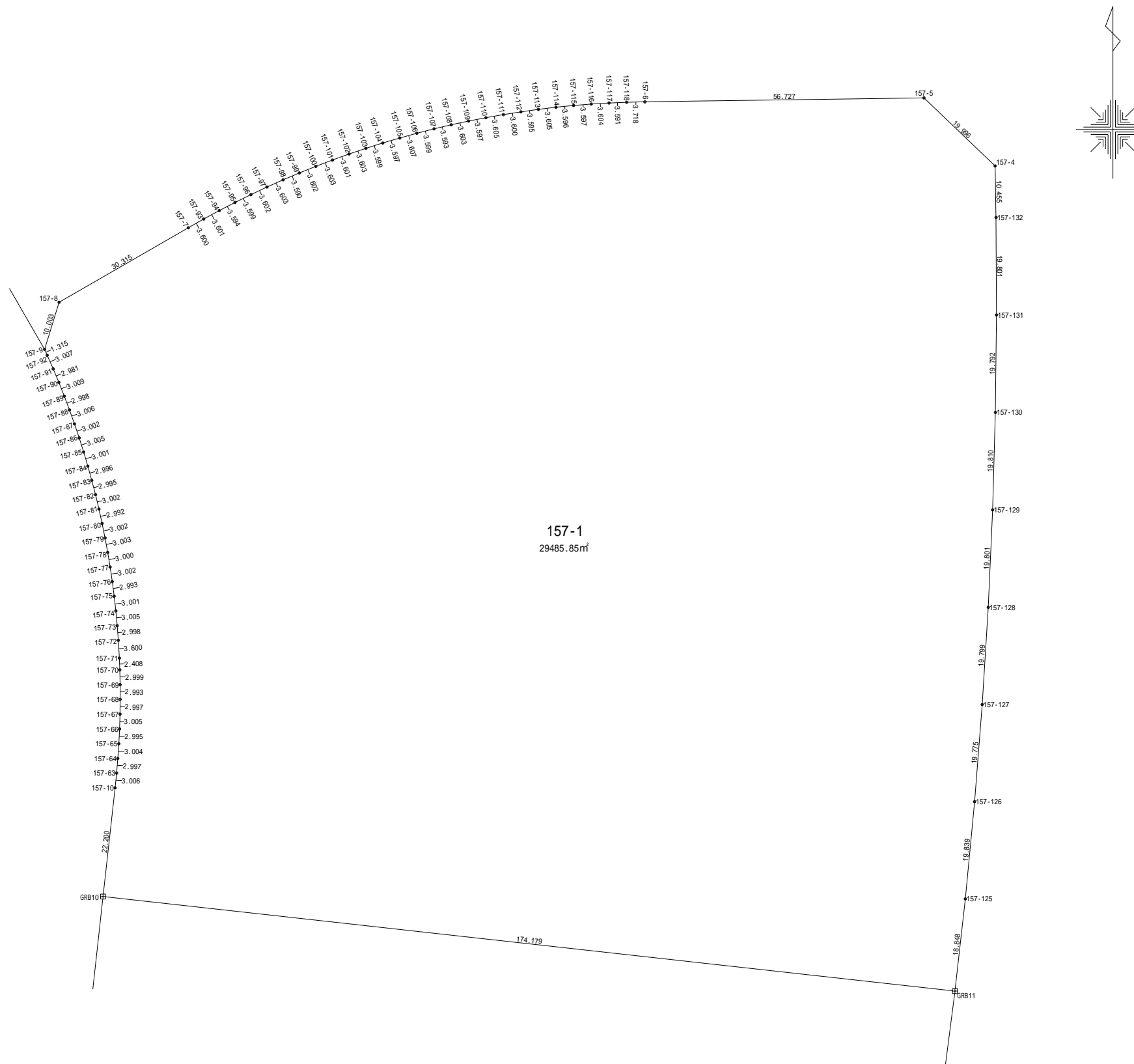
地番	157街区			
測点	Xn	Yn	(Xn+1 - Xn-1)Yn	距離
157-70	-201243.014	-47055.382	254285.355971	2.999
157-69	-201246.012	-47055.325	281905.340329	2.993
157-68	-201249.005	-47055.312	281863.261907	2.997
157-67	-201252.002	-47055.339	282382.949468	3.005
157-66	-201255.006	-47055.430	282106.333227	2.995
157-65	-201257.998	-47055.575	281795.711425	3.004
157-64	-201260.995	-47055.780	281559.041355	2.997
157-63	-201263.981	-47056.031	281232.550300	3.006
157-10	-201266.972	-47056.333	1179019.938385	22.200
GRB10	-201289.037	-47058.781	2452638.829291	30.238
157-11	-201319.090	-47062.115	1568727.555019	3.304
157-62	-201322.370	-47062.519	294193.072023	2.999
157-61	-201325.341	-47062.927	279581.900600	3.006
157-60	-201328.310	-47063.399	278380.941751	2.991
157-59	-201331.256	-47063.915	199434.885553	1.315
157-133	-201332.548	-47064.162	143009.963069	1.767
157-58	-201334.295	-47064.426	221386.297904	2.996
157-57	-201337.252	-47064.910	277776.996278	2.995
157-56	-201340.197	-47065.456	277484.932435	3.009
157-55	-201343.147	-47066.044	276596.852767	2.996
157-54	-201346.074	-47066.685	274980.126692	2.999
157-53	-201348.990	-47067.388	273864.002641	2.995
157-52	-201351.892	-47068.127	202827.739947	1.458
157-134	-201353.299	-47068.509	149979.484367	1.876
157-51	-201355.079	-47069.102	217185.143776	3.001
157-50	-201357.913	-47070.089	266099.955279	3.005
157-49	-201360.732	-47071.130	264014.760982	2.995
157-48	-201363.522	-47072.218	261875.632728	2.997
157-47	-201366.295	-47073.353	260197.793291	2.999
157-46	-201369.050	-47074.540	258311.384007	2.997
157-45	-201371.782	-47075.770	256399.837260	3.002
157-44	-201374.496	-47077.055	254630.270392	3.009
157-43	-201377.191	-47078.393	252169.324638	2.995
157-42	-201379.852	-47079.766	249835.430959	3.005
157-41	-201382.498	-47081.192	247436.955822	2.999
157-40	-201385.108	-47082.669	244817.260720	2.999
157-39	-201387.698	-47084.182	242333.096767	2.995
157-38	-201390.255	-47085.742	239465.084373	2.994
157-37	-201392.783	-47087.345	237350.532108	3.010
157-36	-201395.295	-47089.004	235005.918710	3.004
157-35	-201397.774	-47090.701	231805.792527	2.996
157-34	-201400.218	-47092.434	228821.288200	3.005
157-12	-201402.633	-47094.223	1048364.498203	19.997
157-13	-201422.479	-47091.772	1022974.563156	3.359
157-33	-201424.356	-47088.986	180444.994352	3.609
157-32	-201426.311	-47085.952	181045.485440	3.591
157-30	-201428.201	-47082.899	175572.130371	3.604
157-29	-201430.040	-47079.799	170099.313787	3.603
157-28	-201431.814	-47076.663	164297.553870	3.595
157-27	-201433.530	-47073.504	158590.634976	3.600
157-26	-201435.183	-47070.306	153025.564806	3.606
157-25	-201436.781	-47067.073	147272.871417	3.603
157-24	-201438.312	-47063.811	141285.560622	3.595
157-23	-201439.783	-47060.531	135534.329280	3.596
157-22	-201441.192	-47057.222	129360.303278	3.596
157-21	-201442.532	-47053.885	123140.017045	3.601
157-20	-201443.809	-47050.518	117579.244482	3.605
157-19	-201445.031	-47047.126	111501.688620	3.595
157-18	-201446.179	-47043.719	105330.886841	3.601
157-17	-201447.270	-47040.287	99066.844422	3.596
157-16	-201448.285	-47036.837	92662.568890	3.601
157-15	-201449.240	-47033.365	86447.324870	3.597
157-14	-201450.123	-47029.878	1088741.675700	101.595
	倍面積		115304.889339	
	面積		57652.4446692	
	地積		57652.44	m ²

使用機種：アイソテック株式会社製 Wingneo 測量計算システム
計算式：面積= Yn{(Xn+1)-(Xn-1)}/2 n=1,2,3,...,N



凡 例	
田	コンクリート杭
⊗	金属標
○	無標

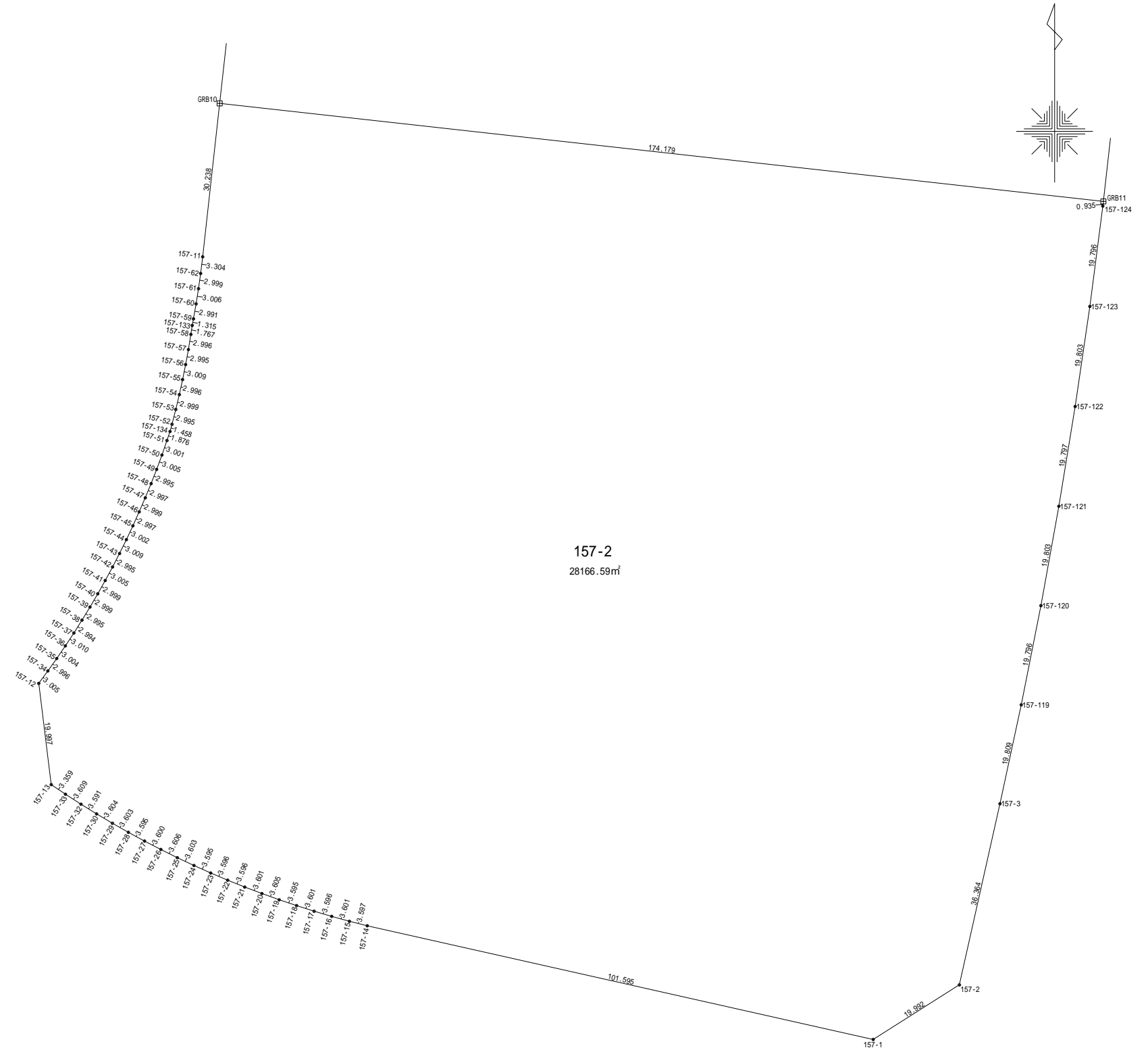
地番	157-1街区			
測点	Xn	Yn	(Xn+1 - Xn-1)Yn	距離
157-125	-201289.518	-46883.553	-1804015.640516	19.839
157-126	-201269.769	-46881.661	-1850137.869704	19.775
157-127	-201250.054	-46880.120	-1850639.617120	19.799
157-128	-201230.293	-46878.893	-1853685.187006	19.801
157-129	-201210.512	-46878.006	-1855572.111498	19.810
157-130	-201190.710	-46877.444	-1856018.640292	19.792
157-131	-201170.919	-46877.215	-1855962.696280	19.801
157-132	-201151.118	-46877.317	-1418226.348518	10.455
157-4	-201140.665	-46877.499	-1137904.410726	19.996
157-5	-201126.844	-46891.949	-611095.879368	56.727
157-6	-201127.633	-46948.671	41127.035796	3.718
157-118	-201127.720	-46952.388	11174.668344	3.591
157-117	-201127.871	-46955.976	17561.535024	3.604
157-116	-201128.094	-46959.573	24137.220522	3.597
157-115	-201128.385	-46963.158	30056.421120	3.596
157-114	-201128.734	-46966.737	37056.755493	3.605
157-113	-201129.174	-46970.315	43917.244525	3.595
157-112	-201129.669	-46973.876	49416.517552	3.600
157-111	-201130.226	-46977.433	55621.280672	3.605
157-110	-201130.853	-46980.983	61733.011662	3.597
157-109	-201131.540	-46984.514	68127.545300	3.603
157-108	-201132.303	-46988.035	74241.095300	3.593
157-107	-201133.120	-46991.534	80355.523140	3.599
157-106	-201134.013	-46995.020	87316.747160	3.607
157-105	-201134.978	-46998.495	93104.018595	3.597
157-104	-201135.994	-47001.946	98939.096330	3.599
157-103	-201137.083	-47005.376	105245.036864	3.603
157-102	-201138.233	-47008.791	111551.861043	3.601
157-101	-201139.456	-47012.178	117718.493712	3.603
157-100	-201140.737	-47015.546	123227.746066	3.602
157-99	-201142.077	-47018.890	128643.683040	3.590
157-98	-201143.473	-47022.198	134812.641666	3.603
157-97	-201144.944	-47025.487	141499.690383	3.602
157-96	-201146.482	-47028.744	146964.825000	3.599
157-95	-201148.069	-47031.974	152054.371942	3.594
157-94	-201149.715	-47035.169	157991.132671	3.601
157-93	-201151.428	-47038.337	164257.872804	3.600
157-7	-201153.207	-47041.467	1795706.414305	30.315
157-8	-201168.343	-47067.733	1162525.937367	10.003
157-9	-201177.906	-47070.668	506639.392867	1.315
157-92	-201179.106	-47070.130	186117.487053	3.007
157-91	-201181.860	-47068.924	259041.191649	2.981
157-90	-201184.610	-47067.773	261051.181276	3.009
157-89	-201187.406	-47066.663	263661.264172	2.998
157-88	-201190.212	-47065.607	265275.234034	3.006
157-87	-201193.043	-47064.597	267147.549552	3.002
157-86	-201195.888	-47063.638	268717.961206	3.005
157-85	-201198.752	-47062.729	270252.791699	3.001
157-84	-201201.630	-47061.879	271341.872987	2.996
157-83	-201204.518	-47061.079	272284.451778	2.995
157-82	-201207.416	-47060.322	273844.814224	3.002
157-81	-201210.337	-47059.628	274911.359960	2.992
157-80	-201213.258	-47058.979	275888.072792	3.002
157-79	-201216.200	-47058.381	277411.316965	3.003
157-78	-201219.153	-47057.837	278289.241167	3.000
157-77	-201222.113	-47057.348	279013.293199	3.002
157-76	-201225.082	-47056.903	279371.501862	2.993
157-75	-201228.050	-47056.519	279987.993097	3.001
157-74	-201231.032	-47056.185	281123.087614	3.005
157-73	-201234.024	-47055.908	281490.114673	2.998
157-72	-201237.014	-47055.680	309812.945429	3.600
157-71	-201240.008	-47055.471	282343.654860	2.408
157-70	-201243.014	-47055.382	254285.355971	2.999
157-69	-201246.012	-47055.325	281905.340329	2.993
157-68	-201249.005	-47055.312	281863.261907	2.997
157-67	-201252.002	-47055.339	282382.949468	3.005
157-66	-201255.006	-47055.430	282106.333227	2.995
157-65	-201257.998	-47055.575	281795.711425	3.004
157-64	-201260.995	-47055.780	281559.041355	2.997
157-63	-201263.981	-47056.031	281232.550300	3.006
157-10	-201266.972	-47056.333	1179019.938385	22.200
GRB10	-201289.037	-47058.781	1942404.668881	174.179
GRB11	-201308.248	-46885.665	22571.759296	18.848
		倍面積	58971.707031	
		面積	29485.85351538	
		地積	29485.85	m ²



使用機種：アイソテック株式会社製 Wingneo 測量計算システム
 計算式：面積 = $Y_n \{ (X_{n+1}) - (X_{n-1}) \} / 2$ $n=1, 2, 3, \dots, N$

凡例	
田	コンクリート杭
⊗	金属標
○	無標

地番	157-2			
測点	Xn	Yn	(Xn+1 - Xn-1)Yn	距離
157-1	-201472.390	-46930.753	543176.535222	19.992
157-2	-201461.697	-46913.861	-2166435.187119	36.364
157-3	-201426.211	-46905.917	-2572789.547450	19.809
157-119	-201406.847	-46901.743	-1818990.298769	19.796
157-120	-201387.428	-46897.896	-1824609.541776	19.803
157-121	-201367.941	-46894.374	-1830006.050976	19.797
157-122	-201348.404	-46891.178	-1834898.686318	19.803
157-123	-201328.810	-46888.307	-1839287.618689	19.796
157-124	-201309.177	-46885.770	-964081.798896	0.935
GRB11	-201308.248	-46885.665	-944297.051348	174.179
GRB10	-201289.037	-47058.781	510234.160410	30.238
157-11	-201319.090	-47062.115	1568727.555019	3.304
157-62	-201322.370	-47062.519	294193.072023	2.999
157-61	-201325.341	-47062.927	279581.900600	3.006
157-60	-201328.310	-47063.399	278380.941751	2.991
157-59	-201331.256	-47063.915	199434.885553	1.315
157-133	-201332.548	-47064.162	143009.963069	1.767
157-58	-201334.295	-47064.426	221386.297904	2.996
157-57	-201337.252	-47064.910	277776.996278	2.995
157-56	-201340.197	-47065.456	277484.932435	3.009
157-55	-201343.147	-47066.044	276596.852767	2.996
157-54	-201346.074	-47066.685	274980.126692	2.999
157-53	-201348.990	-47067.388	273864.002641	2.995
157-52	-201351.892	-47068.127	202827.739947	1.458
157-134	-201353.299	-47068.509	149979.484367	1.876
157-51	-201355.079	-47069.102	217185.143776	3.001
157-50	-201357.913	-47070.089	266099.955279	3.005
157-49	-201360.732	-47071.130	264014.760982	2.995
157-48	-201363.522	-47072.218	261875.632728	2.997
157-47	-201366.295	-47073.353	260197.793291	2.999
157-46	-201369.050	-47074.540	258311.384007	2.997
157-45	-201371.782	-47075.770	256399.837260	3.002
157-44	-201374.496	-47077.055	254630.270392	3.009
157-43	-201377.191	-47078.393	252169.324638	2.995
157-42	-201379.852	-47079.766	249835.430959	3.005
157-41	-201382.498	-47081.192	247436.955822	2.999
157-40	-201385.108	-47082.669	244817.260720	2.999
157-39	-201387.698	-47084.182	242333.096767	2.995
157-38	-201390.255	-47085.742	239465.084373	2.994
157-37	-201392.783	-47087.345	237350.532108	3.010
157-36	-201395.295	-47089.004	235005.918710	3.004
157-35	-201397.774	-47090.701	231805.792527	2.996
157-34	-201400.218	-47092.434	228821.288200	3.005
157-12	-201402.633	-47094.223	1048364.498203	19.997
157-13	-201422.479	-47091.772	1022974.563156	3.359
157-33	-201424.356	-47088.986	180444.994352	3.609
157-32	-201426.311	-47085.952	181045.485440	3.591
157-30	-201428.201	-47082.899	175572.130371	3.604
157-29	-201430.040	-47079.799	170099.313787	3.603
157-28	-201431.814	-47076.663	164297.553870	3.595
157-27	-201433.530	-47073.504	158590.634976	3.600
157-26	-201435.183	-47070.306	153025.564806	3.606
157-25	-201436.781	-47067.073	147272.871417	3.603
157-24	-201438.312	-47063.811	141285.560622	3.595
157-23	-201439.783	-47060.531	135534.329280	3.596
157-22	-201441.192	-47057.222	129360.303278	3.596
157-21	-201442.532	-47053.885	123140.017045	3.601
157-20	-201443.809	-47050.518	117579.244482	3.605
157-19	-201445.031	-47047.126	111501.688620	3.595
157-18	-201446.179	-47043.719	105330.886841	3.601
157-17	-201447.270	-47040.287	99066.844422	3.596
157-16	-201448.285	-47036.837	92662.568890	3.601
157-15	-201449.240	-47033.365	86447.324870	3.597
157-14	-201450.123	-47029.878	1088741.675700	101.595
	倍面積		56333.182308	
	面積		28166.59115389	
	地積		28166.59	m



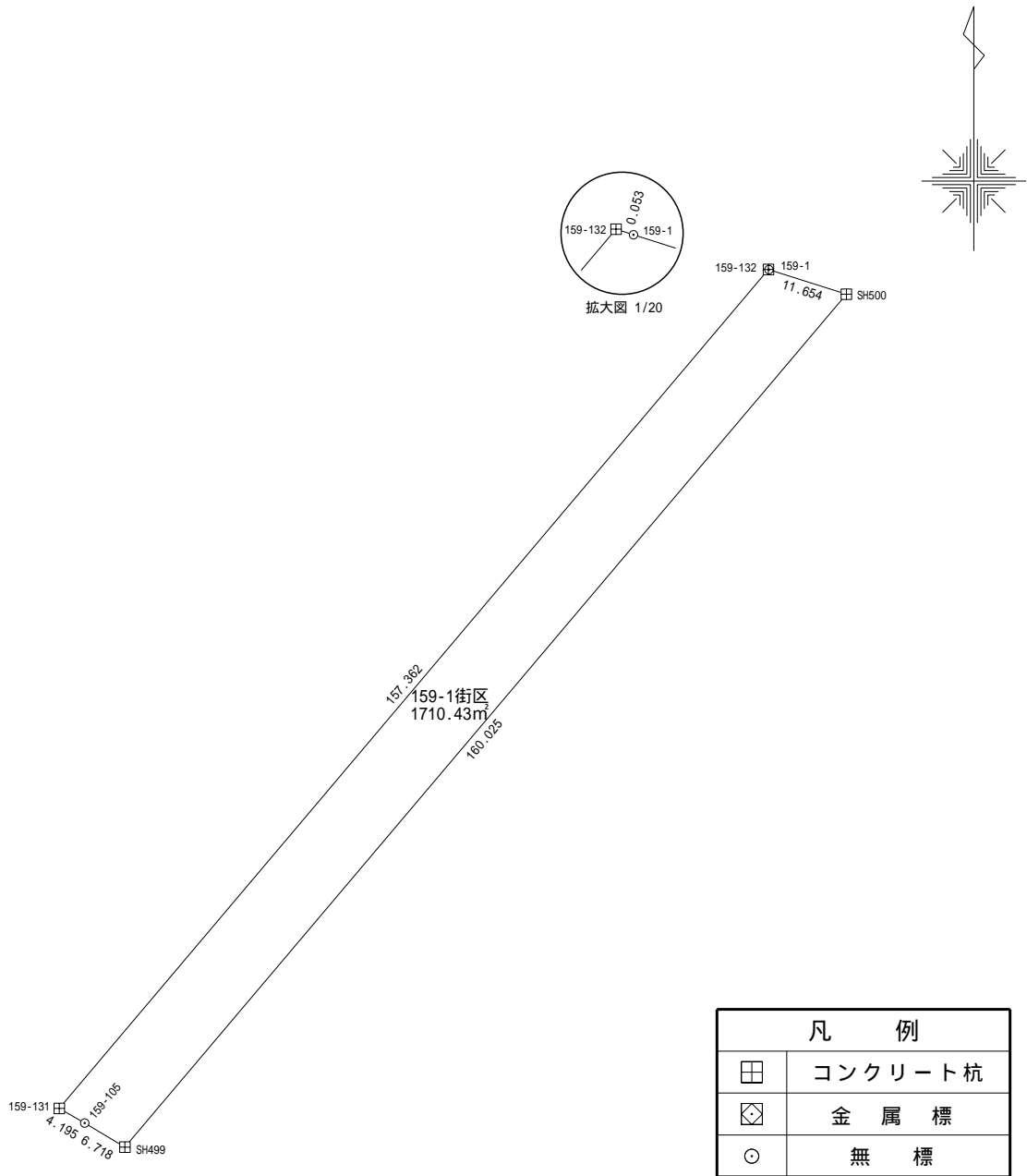
使用機種：アイソテック株式会社製 Wingneo 測量計算システム
 計算式：面積 = $Yn \{ (Xn+1) - (Xn-1) \} / 2$ $n=1, 2, 3, \dots, N$

凡例	
田	コンクリート杭
⊗	金属標
○	無標

地 番 159-1街区

土地の所在 山形市大字松原

縮尺 S = 1 : 1 0 0 0



凡 例	
⊠	コンクリート杭
⊠	金 属 標
○	無 標

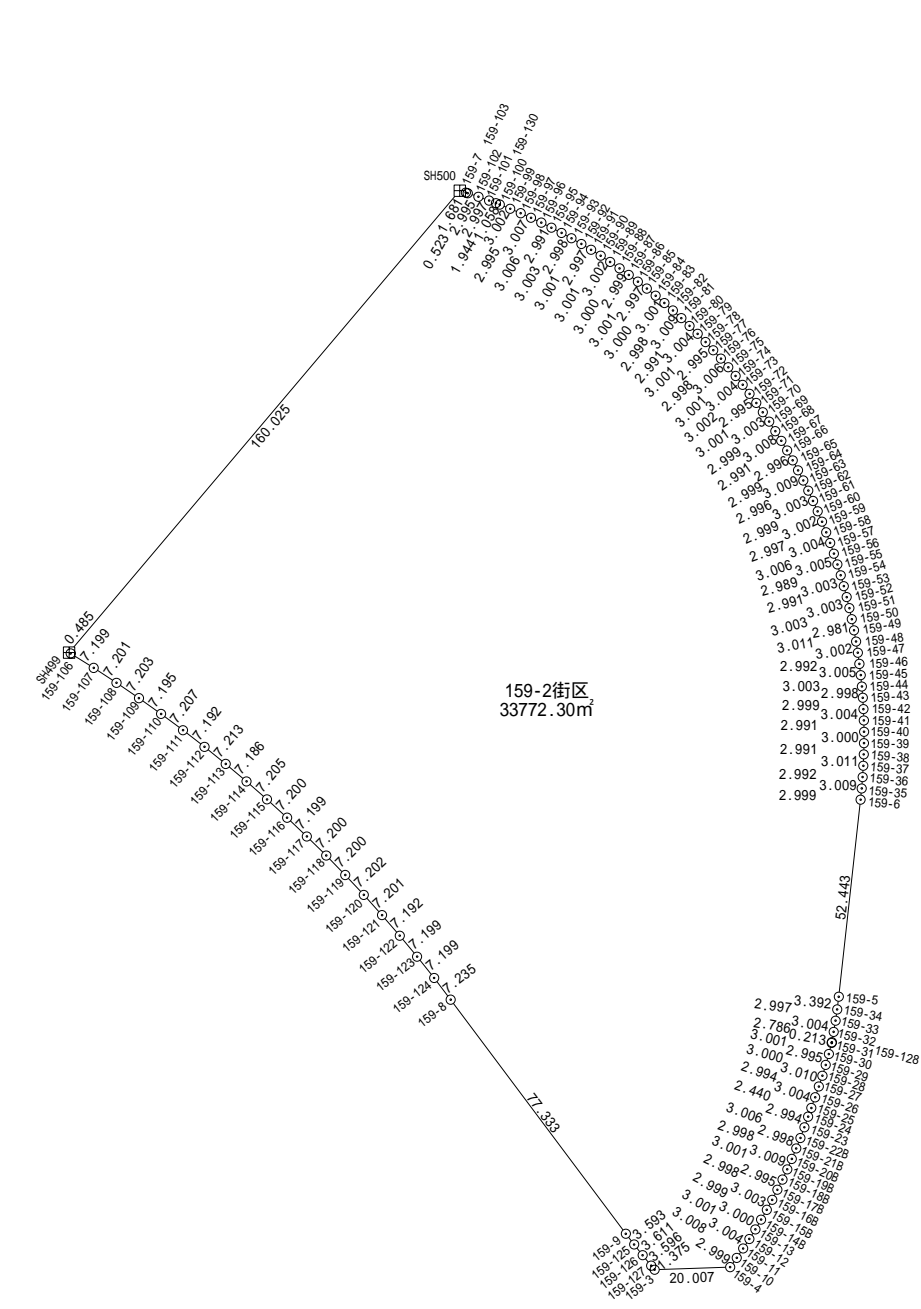
地 番	159-1街区			
測 点	X n	Y n	(X n + 1 - X n - 1) Y n	距 離
159-132	-201100.347	-47191.429	5669830.76187776	157.362
159-131	-201220.508	-47293.037	5781317.71662387	4.195
159-105	-201222.591	-47289.395	261899.74676009	6.718
SH499	-201226.046	-47283.634	-5612947.63066049	160.025
SH500	-201103.883	-47180.269	-5929785.33349976	11.654
159-1	-201100.363	-47191.379	-166894.40010134	0.053
		倍 面 積	3420.86100011	
		面 積	1710.43050005	
		地 積	1710.43	m ²

使用機種 ; アイサンテクノロジー株式会社 Wingneo 測量計算システム
 計算式 ; 面積 = { Yi (Xi+1 - Xi-1) } / 2 i=1,2,3, ... , N

地番	159-2街区			
測点	Xn	Yn	(Xn+1 - Xn-1) Yn	距離
SH499	-201226.046	-47283.634	5788108.31680549	0.485
159-106	-201226.296	-47283.218	192152.98165684	7.199
159-107	-201230.110	-47277.113	367015.63301715	7.201
159-108	-201234.059	-47271.091	378537.28175207	7.203
159-109	-201238.118	-47265.141	388996.54627877	7.195
159-110	-201242.289	-47259.278	400380.10400145	7.207
159-111	-201246.590	-47253.495	411226.31220556	7.192
159-112	-201250.991	-47247.808	421926.12513699	7.213
159-113	-201255.520	-47242.193	432226.55006636	7.186
159-114	-201260.141	-47236.690	442364.37454410	7.205
159-115	-201264.885	-47231.267	453112.44031766	7.200
159-116	-201269.734	-47225.945	462797.96465456	7.199
159-117	-201274.684	-47220.718	472432.46364148	7.200
159-118	-201279.739	-47215.590	482324.97957834	7.200
159-119	-201284.900	-47210.570	491850.72225892	7.202
159-120	-201290.157	-47205.647	501093.10055459	7.201
159-121	-201295.515	-47200.835	509905.61292288	7.192
159-122	-201300.960	-47196.137	518446.28492503	7.199
159-123	-201306.500	-47191.539	527022.63563948	7.199
159-124	-201312.128	-47187.049	536954.99418088	7.235
159-8	-201317.879	-47182.660	3192378.23588525	77.333
159-9	-201379.788	-47136.317	3052661.63125302	3.593
159-125	-201382.642	-47134.133	267815.42433936	3.611
159-126	-201385.470	-47131.888	263946.62598294	3.596
159-127	-201388.242	-47129.597	180282.73467360	1.375
159-3	-201389.295	-47128.713	17734.14589001	20.007
159-4	-201388.618	-47108.717	-146939.66340469	2.999
159-10	-201386.176	-47106.976	-232297.74656027	3.008
159-11	-201383.687	-47105.287	-235690.31937533	3.004
159-12	-201381.172	-47103.644	-238399.97727971	3.001
159-13	-201378.626	-47102.056	-241250.78788678	3.000
159-14B	-201376.050	-47100.517	-244104.39370356	2.999
159-15B	-201373.443	-47099.036	-246862.37110455	3.003
159-16B	-201370.809	-47097.594	-249448.42448877	2.998
159-17B	-201368.146	-47096.216	-251833.80323357	2.995
159-18B	-201365.462	-47094.889	-254376.91531345	3.001
159-19B	-201362.745	-47093.613	-257533.59551658	3.009
159-20B	-201359.993	-47092.397	-259810.16223259	2.998
159-21B	-201357.228	-47091.239	-261382.04807216	2.998
159-22B	-201354.443	-47090.129	-263770.05829547	3.006
159-23	-201351.627	-47089.077	-265538.51458671	2.994
159-24	-201348.804	-47088.080	-240896.67352621	2.440
159-25	-201346.511	-47087.246	-241065.23308276	3.004
159-26	-201343.684	-47086.229	-266255.06586430	2.994
159-27	-201340.856	-47085.246	-267825.43087355	3.010
159-28	-201337.996	-47084.310	-269756.38803706	3.000
159-29	-201335.127	-47083.433	-270751.38872086	2.995
159-30	-201332.246	-47082.616	-272468.35892183	3.001
159-31	-201329.340	-47081.867	-146507.96423185	0.213
159-128	-201329.134	-47081.815	-138777.96706865	2.786
159-32	-201326.392	-47081.319	-268647.29470279	3.004
159-33	-201323.428	-47080.836	-279223.45713649	2.997
159-34	-201320.462	-47080.410	-298149.45098470	3.392
159-5	-201317.095	-47079.995	-2612419.42065145	52.443
159-6	-201264.973	-47074.207	-2594106.03727378	2.999
159-35	-201261.988	-47073.910	-281684.38224944	3.009
159-36	-201258.989	-47073.675	-281744.16203799	2.992
159-37	-201256.003	-47073.486	-282184.54002891	3.011
159-38	-201252.994	-47073.363	-282387.50438259	2.991
159-39	-201250.004	-47073.299	-281987.51604370	3.000
159-40	-201247.004	-47073.291	-281994.02429873	2.991
159-41	-201244.014	-47073.341	-282041.54538095	3.004
159-42	-201241.012	-47073.466	-282227.62333128	2.999
159-43	-201238.018	-47073.635	-281635.99922046	2.998
159-44	-201235.029	-47073.869	-281358.72915282	3.003
159-45	-201232.041	-47074.169	-281153.71173671	3.005
159-46	-201229.057	-47074.522	-279977.29862744	2.992
159-47	-201226.094	-47074.937	-279065.79091021	3.002
159-48	-201223.129	-47075.408	-279011.95201892	3.011
159-49	-201220.167	-47075.947	-277113.38104694	2.981
159-50	-201217.242	-47076.526	-275713.62925565	3.003
159-51	-201214.310	-47077.174	-275475.41716572	3.003
159-52	-201211.391	-47077.876	-273584.18760247	2.991
159-53	-201208.499	-47078.641	-272217.63292194	3.003
159-54	-201205.608	-47079.456	-270541.30112931	2.989
159-55	-201202.752	-47080.336	-269048.68356411	3.005
159-56	-201199.894	-47081.261	-268072.61046056	3.006
159-57	-201197.059	-47082.259	-265955.42381730	3.004
159-58	-201194.245	-47083.312	-263839.08659364	2.997

地番	(1) 159-2街区			
測点	Xn	Yn	(Xn+1 - Xn-1) Yn	距離
159-59	-201191.455	-47084.405	-261699.25623483	3.002
159-60	-201188.687	-47085.566	-259467.70563577	2.999
159-61	-201185.944	-47086.778	-257317.96882110	3.003
159-62	-201183.222	-47088.047	-254754.12695144	2.996
159-63	-201180.534	-47089.369	-252454.36699329	3.009
159-64	-201177.861	-47090.750	-250161.42026965	2.999
159-65	-201175.222	-47092.174	-247055.80694508	2.996
159-66	-201172.615	-47093.650	-243862.35528786	2.991
159-67	-201170.044	-47095.177	-241511.56060521	3.008
159-68	-201167.487	-47096.761	-238860.93378281	2.999
159-69	-201164.972	-47098.396	-235445.79159103	3.003
159-70	-201162.488	-47100.082	-232841.42877677	3.001
159-71	-201160.028	-47101.803	-229238.65844993	2.995
159-72	-201157.621	-47103.584	-225567.62421342	3.002
159-73	-201155.240	-47105.412	-222814.92160716	3.004
159-74	-201152.891	-47107.285	-219288.71707164	3.001
159-75	-201150.584	-47109.205	-215708.67761841	3.006
159-76	-201148.312	-47111.172	-212037.59233560	2.998
159-77	-201146.084	-47113.178	-207671.36612887	2.995
159-78	-201143.904	-47115.231	-203854.94467696	3.001
159-79	-201141.757	-47117.328	-200471.14733975	3.004
159-80	-201139.649	-47119.468	-196170.26572792	2.991
159-81	-201137.594	-47121.641	-192340.91586763	3.009
159-82	-201135.567	-47123.866	-188323.88672554	2.998
159-83	-201133.597	-47126.126	-183587.10741899	3.001
159-84	-201131.672	-47128.428	-179809.55346932	3.000
159-85	-201129.782	-47130.757	-175311.49478602	2.997
159-86	-201127.952	-47133.131	-170418.76273846	3.001
159-87	-201126.166	-47135.543	-166160.69068688	2.999
159-88	-201124.427	-47137.986	-161706.20005160	3.000
159-89	-201122.736	-47140.463	-156969.03754165	3.002
159-90	-201121.097	-47142.978	-152249.08876855	3.001
159-91	-201119.506	-47145.523	-147644.84682271	2.997
159-92	-201117.965	-47148.094	-142713.52180191	3.001
159-93	-201116.479	-47150.701	-137714.39671407	2.998
159-94	-201115.045	-47153.333	-132797.38291433	3.003
159-95	-201113.663	-47155.999	-127966.39592962	2.991
159-96	-201112.331	-47158.676	-122925.25642728	3.006
159-97	-201111.057	-47161.399	-117866.74179529	3.007
159-98	-201109.832	-47164.145	-112715.18280935	2.995
159-99	-201108.667	-47166.905	-107547.59291401	3.002
159-100	-201107.552	-47169.692	-102427.79758563	1.058
159-130	-201107.175	-47170.680	-49951.58179729	1.944
159-101	-201106.493	-47172.500	-79446.35013413	2.997
159-102	-201105.491	-47175.325	-91746.51890598	2.995
159-103	-201104.548	-47178.168	-51906.88541914	0.523
159-7	-201104.391	-47178.667	-31350.68943595	1.681
SH500	-201103.883	-47180.269	5739724.94015021	160.025
倍面積				67544.60067851
面積				33772.30033925
地積				33772.30 m

使用機種 ; アイサンテクノロジー株式会社 Wingneo 測量計算システム
 計算式 ; 面積 = {Yi (Xi+1-Xi-1)} / 2 i=1,2,3, ..., N



凡例	
田	コンクリート杭
⊗	金属標
○	無標