

面積(座標法)計算書

地番: 141街区

測点	X	Y	距離	方向角	夾角	X-X	Y (X-X)
141-184	-200714.638	-47847.757	0.607	251-12-39	178-27-02	-0.369	17637.991392
141-22	-200714.834	-47848.332	0.603	250-37-30	179-24-51	-0.395	18923.448696
141-23	-200715.034	-47848.900	0.607	249-05-16	178-27-46	-0.417	19940.323923
141-24	-200715.250	-47849.468	0.550	248-07-21	179-02-05	-0.422	20177.422406
141-25	-200715.455	-47849.978	0.607	246-44-06	178-36-45	-0.445	21269.424781
141-26	-200715.695	-47850.535	0.607	246-07-52	179-23-46	-0.485	23222.363371
141-27	-200715.941	-47851.091	0.594	244-22-26	178-14-34	-0.503	24045.385935
141-28	-200716.197	-47851.626	0.606	243-10-24	178-47-58	-0.530	25379.516639
141-29	-200716.471	-47852.167	0.595	241-39-54	178-29-30	-0.556	26607.725565
141-30	-200716.753	-47852.691	0.603	241-09-06	179-29-12	-0.573	27429.024969
141-31	-200717.044	-47853.218	0.595	239-47-08	178-38-02	-0.590	28252.083192
141-32	-200717.344	-47853.733	0.607	238-23-42	178-36-34	-0.618	29552.738968
141-33	-200717.662	-47854.250	0.604	236-54-07	178-30-25	-0.648	31001.649237
141-34	-200717.992	-47854.756	0.606	235-58-09	179-04-02	-0.669	32005.970396
141-35	-200718.330	-47855.258	0.591	234-43-07	178-44-58	-0.681	32566.823655
141-36	-200718.672	-47855.741	0.590	233-37-14	178-54-07	-0.692	33101.580273
141-37	-200719.022	-47856.216	0.605	232-18-55	178-41-41	-0.720	34454.439490
141-38	-200719.392	-47856.695	0.609	231-16-20	178-57-25	-0.751	35939.344861
141-39	-200719.773	-47857.170	0.583	229-54-18	178-37-58	-0.757	36209.997094
141-40	-200720.149	-47857.616	0.607	228-33-09	178-38-51	-0.777	37186.429435
141-41	-200720.550	-47858.070	0.603	227-42-26	179-09-17	-0.807	38617.868683
141-42	-200720.956	-47858.516	0.592	226-16-58	178-34-32	-0.815	38985.676925
141-43	-200721.365	-47858.944	0.603	225-01-51	178-44-53	-0.835	39972.801773
141-44	-200721.791	-47859.371	0.610	224-04-33	179-02-42	-0.864	41361.544006
141-45	-200722.229	-47859.795	0.584	222-26-43	178-22-10	-0.869	41603.486317
141-46	-200722.660	-47860.189	0.607	221-27-00	179-00-17	-0.886	42397.241402
141-47	-200723.115	-47860.591	0.605	220-51-22	179-24-22	-0.912	43660.116957
141-48	-200723.572	-47860.986	0.592	219-04-42	178-13-20	-0.917	43900.351438
141-49	-200724.032	-47861.360	0.607	217-31-54	178-27-12	-0.941	45039.200762
141-50	-200724.513	-47861.729	0.602	216-49-46	179-17-52	-0.964	46116.036521
141-51	-200724.996	-47862.091	0.593	216-20-51	179-31-05	-0.960	45948.355055
141-52	-200725.473	-47862.442	0.607	213-58-21	177-37-30	-0.981	46975.398910
141-53	-200725.977	-47862.782	0.588	212-41-56	178-43-35	-0.999	47810.557998
141-54	-200726.472	-47863.099	0.606	211-37-55	178-55-59	-1.011	48390.308160
141-55	-200726.988	-47863.417	0.603	210-55-32	179-17-37	-1.033	49449.308334
141-56	-200727.505	-47863.727	0.601	209-25-28	178-29-56	-1.041	49821.540705
141-57	-200728.029	-47864.022	0.586	208-40-49	179-15-21	-1.038	49661.964547
141-58	-200728.543	-47864.304	0.606	206-46-05	178-05-16	-1.055	50481.157560
141-59	-200729.084	-47864.576	0.602	205-46-59	179-00-54	-1.083	51844.863835
141-60	-200729.626	-47864.838	0.604	204-39-12	178-52-13	-1.092	52246.739893

面積(座標法)計算書

地番: 141街区

測点	X	Y	距離	方向角	夾角	X-X	Y (X-X)
141-61	-200730.175	-47865.090	0.602	203-15-41	178-36-29	-1.102	52745.564343
141-62	-200730.728	-47865.328	0.604	202-26-58	179-11-17	-1.111	53168.231550
141-63	-200731.286	-47865.559	0.604	200-45-52	178-18-54	-1.122	53716.592277
141-64	-200731.850	-47865.773	0.586	199-19-56	178-34-04	-1.118	53492.462079
141-65	-200732.404	-47865.967	0.604	199-28-41	180-08-45	-1.123	53757.864084
141-66	-200732.973	-47866.168	0.606	197-01-41	177-33-00	-1.149	54993.663208
141-67	-200733.552	-47866.346	0.592	195-54-57	178-53-16	-1.148	54947.626620
141-68	-200734.121	-47866.508	0.608	195-10-49	179-15-52	-1.156	55327.628807
141-69	-200734.708	-47866.667	0.605	193-40-40	178-29-51	-1.175	56234.707682
141-70	-200735.296	-47866.810	0.592	192-31-46	178-51-06	-1.166	55794.679170
141-71	-200735.874	-47866.938	0.605	191-33-57	179-02-11	-1.170	56025.162627
141-72	-200736.467	-47867.060	0.585	189-52-12	178-18-15	-1.169	55964.107990
141-73	-200737.043	-47867.160	0.606	189-09-00	179-16-48	-1.175	56243.934133
141-74	-200737.642	-47867.256	0.607	187-46-23	178-37-23	-1.200	57419.586330
141-75	-200738.243	-47867.339	0.598	186-56-00	179-09-37	-1.195	57193.702085
141-76	-200738.837	-47867.411	0.587	185-15-16	178-19-16	-1.179	56416.235887
141-77	-200739.421	-47867.464	0.605	183-40-50	178-25-34	-1.188	56881.037783
141-78	-200740.025	-47867.503	0.605	183-23-35	179-42-45	-1.207	57797.773409
141-79	-200740.629	-47867.539	0.607	181-27-12	178-03-37	-1.211	57977.788539
141-80	-200741.236	-47867.555	0.604	180-07-43	178-40-31	-1.212	58003.487184
141-81	-200741.841	-47867.556	0.376	179-32-58	179-25-15	-0.980	46912.691489
141-19	-200742.216	-47867.553	34.757	179-05-45	179-32-47	-35.128	1681500.411487
141-20	-200776.969	-47867.005	3.602	178-36-30	179-30-45	-38.353	1835866.560540
141-83	-200780.570	-47866.917	3.606	177-30-52	178-54-22	-7.203	344785.680086
141-84	-200784.172	-47866.761	3.605	176-27-58	178-57-06	-7.200	344638.929726
141-85	-200787.770	-47866.538	3.595	175-21-55	178-53-57	-7.181	343736.748311
141-86	-200791.353	-47866.248	3.597	174-21-53	178-59-58	-7.163	342878.971229
141-87	-200794.933	-47865.895	3.598	173-15-42	178-53-49	-7.154	342412.813260
141-88	-200798.506	-47865.473	3.464	172-17-35	179-01-53	-7.007	335378.967071
141-89	-200801.940	-47865.008	3.639	171-09-00	178-51-25	-7.029	336434.062200
141-90	-200805.535	-47864.448	3.645	170-11-39	179-02-39	-7.188	344027.477599
141-91	-200809.127	-47863.827	3.645	169-11-16	178-59-37	-7.172	343296.020641
141-92	-200812.708	-47863.143	3.606	167-59-21	178-48-05	-7.108	340205.898065
141-93	-200816.235	-47862.393	2.340	167-10-38	179-11-17	-5.809	278014.600712
141-21	-200818.516	-47861.874	18.923	166-48-16	179-37-38	-20.704	990955.205195
142-52	-200836.939	-47857.554	1.073	167-26-44	180-38-28	-19.470	931797.926987
合計			389.187		27720-00-00		-19690.165588

倍面積

19690.165588

面積(座標法)計算書

地番: 141街区

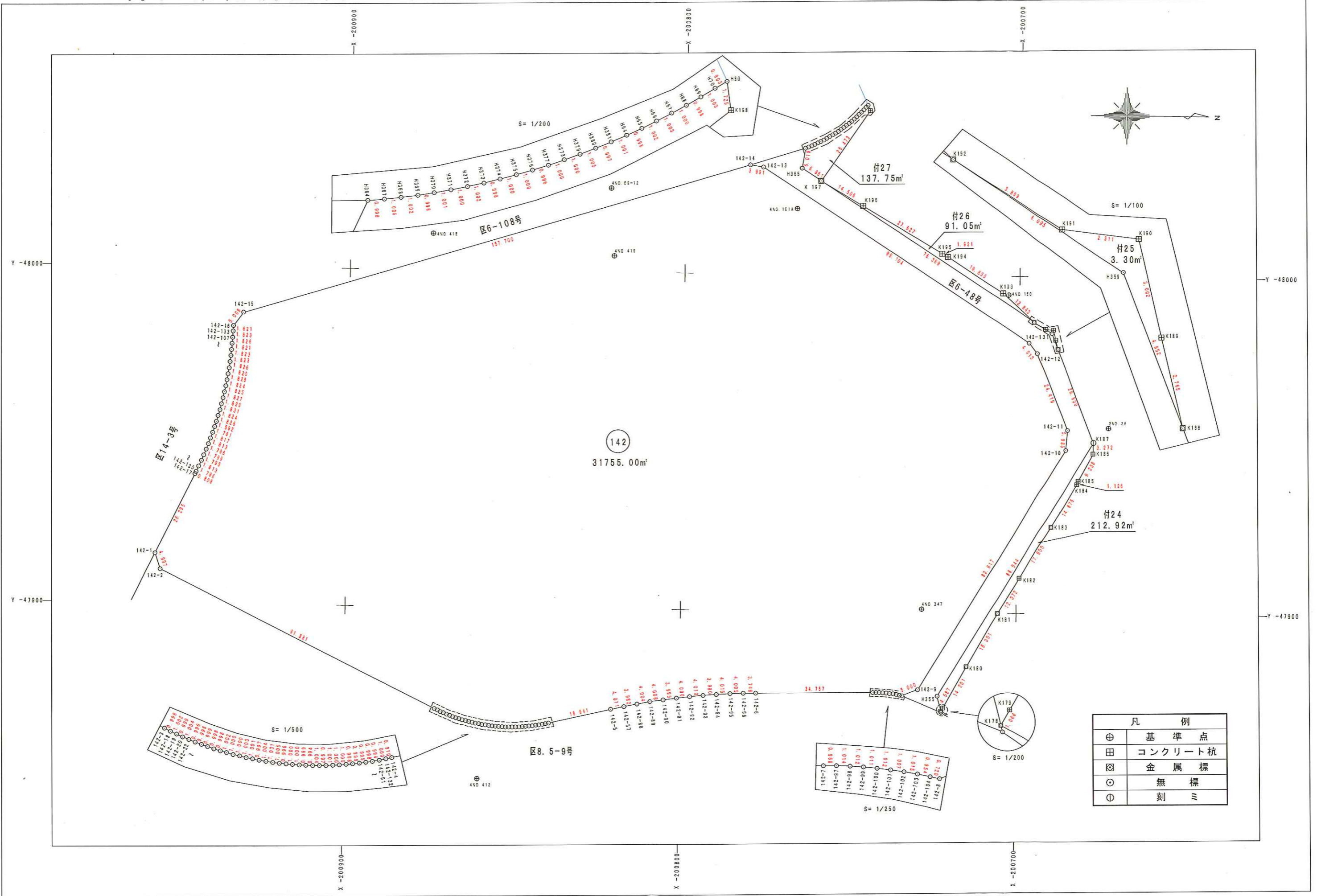
測点	X	Y	距離	方向角	夾角	X-X	Y (X-X)
Y269	-200837.986	-47857.321	12.010	121-30-22	134-03-38	-7.324	350487.498730
Y270	-200844.263	-47847.081	34.683	70-38-14	129-07-52	5.222	-249879.092953
141-2	-200832.764	-47814.360	0.814	70-01-44	179-23-30	11.777	-563109.717720
141-15	-200832.486	-47813.595	3.325	75-04-55	185-03-11	1.134	-54220.616730
141-14	-200831.630	-47810.382	3.048	80-23-10	185-18-15	1.365	-65261.171430
141-13	-200831.121	-47807.377	2.987	85-41-59	185-18-49	0.733	-35042.807341
141-12	-200830.897	-47804.398	2.983	90-47-15	185-05-16	0.183	-8748.204834
141-11	-200830.938	-47801.415	3.017	96-01-55	185-14-40	-0.358	17112.906570
141-10	-200831.255	-47798.415	2.972	101-15-12	185-13-17	-0.897	42875.178255
141-9	-200831.835	-47795.500	2.999	106-24-17	185-09-05	-1.427	68204.178500
141-8	-200832.682	-47792.623	3.013	111-37-04	185-12-47	-1.957	93530.163211
141-7	-200833.792	-47789.822	1.360	115-20-25	183-43-21	-1.692	80860.378824
141-17	-200834.374	-47788.593	18.086	24-16-58	88-56-33	15.904	-760015.446494
141-16	-200817.888	-47781.155	97.824	359-00-21	154-43-23	114.295	-5461168.979052
141-3	-200720.079	-47782.853	5.991	308-43-47	129-43-26	101.558	-4852728.502705
141-4	-200716.330	-47787.526	1.402	258-38-27	129-54-40	3.472	-165920.262786
141-5	-200716.607	-47788.901	1.215	258-58-35	180-20-08	-0.509	24303.280600
141-122	-200716.839	-47790.094	1.204	259-33-51	180-35-16	-0.450	21526.451785
141-123	-200717.057	-47791.278	1.198	260-47-20	181-13-29	-0.410	19585.325289
141-124	-200717.249	-47792.460	1.201	261-15-08	180-27-48	-0.374	17894.182429
141-125	-200717.431	-47793.647	1.195	262-08-05	180-52-57	-0.346	16543.996521
141-126	-200717.595	-47794.831	1.197	262-59-35	180-51-30	-0.310	14795.165149
141-127	-200717.741	-47796.019	1.211	264-03-17	181-03-42	-0.271	12973.334598
141-128	-200717.866	-47797.223	1.198	264-26-32	180-23-15	-0.241	11538.622452
141-129	-200717.982	-47798.415	1.193	265-21-43	180-55-11	-0.212	10155.947730
141-130	-200718.079	-47799.604	1.205	266-16-50	180-55-07	-0.175	8346.295591
141-131	-200718.157	-47800.806	1.194	267-08-03	180-51-13	-0.138	6590.361720
141-132	-200718.217	-47801.999	1.202	267-45-43	180-37-40	-0.107	5098.255325
141-133	-200718.264	-47803.200	1.195	268-57-04	181-11-21	-0.069	3289.562414
141-134	-200718.285	-47804.395	1.204	269-15-36	180-18-32	-0.037	1789.127301
141-135	-200718.301	-47805.599	1.198	270-23-58	181-08-22	-0.007	343.940728
141-136	-200718.293	-47806.797	1.207	271-06-54	180-42-56	0.032	-1522.442352
141-137	-200718.269	-47808.004	1.198	271-47-45	180-40-51	0.061	-2917.964888
141-138	-200718.232	-47809.202	1.192	272-43-30	180-55-45	0.094	-4503.306943
141-139	-200718.175	-47810.392	1.205	273-44-59	181-01-29	0.135	-6474.931728
141-140	-200718.096	-47811.594	1.203	274-24-25	180-39-26	0.171	-8186.825591
141-141	-200718.004	-47812.794	1.193	275-00-44	180-36-19	0.197	-9405.763822
141-142	-200717.899	-47813.982	1.205	276-05-53	181-05-09	0.232	-11105.895218
141-143	-200717.771	-47815.181	1.194	276-50-30	180-44-37	0.270	-12923.781064
141-144	-200717.629	-47816.366	1.192	277-39-13	180-48-43	0.301	-14397.328615

面積(座標法)計算書

地番: 141街区

測点	X	Y	距離	方向角	夾角	X-X	Y (X-X)
141-145	-200717.470	-47817.548	1.216	278-41-47	181-02-34	0.343	-16382.539250
141-146	-200717.287	-47818.750	1.194	279-17-00	180-35-13	0.376	-17996.925525
141-147	-200717.094	-47819.928	1.199	279-36-43	180-19-43	0.393	-18780.709543
141-148	-200716.894	-47821.110	1.196	281-03-07	181-26-24	0.429	-20538.644492
141-149	-200716.665	-47822.284	1.197	281-57-48	180-54-41	0.477	-22833.736523
141-150	-200716.416	-47823.455	1.199	282-21-41	180-23-53	0.505	-24147.124634
141-151	-200716.160	-47824.627	1.202	283-07-21	180-45-40	0.530	-25326.203489
141-152	-200715.887	-47825.797	1.201	284-12-52	181-05-31	0.568	-27149.474818
141-153	-200715.592	-47826.961	1.190	284-52-45	180-39-53	0.600	-28717.825003
141-154	-200715.286	-47828.111	1.213	285-51-05	180-58-20	0.637	-30467.448990
141-155	-200714.955	-47829.278	1.410	286-42-35	180-51-30	0.737	-35238.453809
141-18	-200714.550	-47830.629	0.602	286-54-18	180-11-43	0.580	-27763.223775
141-156	-200714.374	-47831.205	0.603	285-07-47	178-13-29	0.333	-15906.384358
141-157	-200714.217	-47831.787	0.604	284-11-55	179-04-08	0.306	-14620.780129
141-158	-200714.069	-47832.373	0.606	282-50-11	178-38-16	0.283	-13529.236515
141-159	-200713.934	-47832.964	0.581	281-37-17	178-47-06	0.252	-12038.268334
141-160	-200713.817	-47833.533	0.606	280-22-04	178-44-47	0.226	-10814.743745
141-161	-200713.708	-47834.129	0.607	279-19-59	178-57-55	0.207	-9919.027970
141-162	-200713.610	-47834.727	0.605	278-20-22	179-00-23	0.186	-8903.088890
141-163	-200713.522	-47835.326	0.583	277-13-26	178-53-04	0.161	-7702.857484
141-164	-200713.449	-47835.904	0.607	275-25-09	178-11-43	0.131	-6245.363301
141-165	-200713.391	-47836.508	0.603	274-40-06	179-14-57	0.106	-5086.981611
141-166	-200713.342	-47837.109	0.608	273-04-05	178-23-59	0.082	-3903.199990
141-167	-200713.310	-47837.716	0.604	272-35-37	179-31-32	0.060	-2864.239701
141-168	-200713.283	-47838.319	0.606	270-32-59	177-57-22	0.033	-1585.759910
141-169	-200713.277	-47838.925	0.575	270-26-25	179-53-26	0.010	-489.802664
141-170	-200713.272	-47839.501	0.607	268-02-02	177-35-37	-0.016	784.139646
141-171	-200713.293	-47840.107	0.605	266-55-05	178-53-03	-0.053	2552.448619
141-172	-200713.326	-47840.711	0.585	265-31-25	178-36-20	-0.078	3741.366075
141-173	-200713.371	-47841.294	0.606	265-11-56	179-40-31	-0.096	4610.663609
141-174	-200713.422	-47841.898	0.605	263-49-02	178-37-06	-0.116	5545.285052
141-175	-200713.487	-47842.500	0.605	262-27-34	178-38-32	-0.145	6920.252576
141-176	-200713.567	-47843.100	0.588	261-25-34	178-58-00	-0.167	7993.562517
141-177	-200713.654	-47843.681	0.607	260-13-26	178-47-52	-0.191	9123.050393
141-178	-200713.757	-47844.280	0.604	258-29-27	178-16-01	-0.224	10695.172456
141-179	-200713.878	-47844.871	0.604	257-35-57	179-06-30	-0.250	11971.017891
141-180	-200714.008	-47845.461	0.586	255-57-44	178-21-47	-0.272	13010.470354
141-181	-200714.150	-47846.030	0.603	255-38-43	179-40-59	-0.292	13955.167849
141-182	-200714.299	-47846.6	0.608	254-11-03	-32-20	-0.315	15082.597243
141-183	-200714.465	-47847.199	0.584	252-45-37	178-34-34	-0.339	16212.904328

街区確定測量図 (142街区・付24・25・26・27) 縮尺 1:1000



凡 例

⊕	基準点
⊞	コンクリート杭
⊗	金属標
⊙	無標
①	刻ミ

面積 (座標法) 計算書

地番: 142街区

測点	X	Y	距離	方向角	夾角	X - X	Y (X - X)
142-14	-200780.819	-48032.351	157.700	163-06-05	154-29-42	-154.837	7437198.873260
142-15	-200931.710	-47986.511	5.009	126-49-28	143-43-23	-153.893	7384800.049590
142-16	-200934.713	-47982.501	1.621	92-00-17	145-10-49	-3.059	146779.086574
142-133	-200934.769	-47980.882	1.823	92-59-06	180-58-49	-0.152	7274.358425
142-107	-200934.864	-47979.061	1.826	93-48-33	180-49-27	-0.216	10373.914147
142-108	-200934.986	-47977.240	1.821	94-43-07	180-54-34	-0.271	13007.191922
142-109	-200935.135	-47975.425	1.823	95-44-12	181-01-05	-0.332	15928.606625
142-110	-200935.318	-47973.611	1.823	96-46-40	181-02-28	-0.397	19064.834775
142-111	-200935.533	-47971.800	1.826	97-49-16	181-02-36	-0.464	22245.929745
142-112	-200935.781	-47969.991	1.820	98-48-44	180-59-28	-0.527	25299.156746
142-113	-200936.060	-47968.192	1.828	99-29-20	180-40-36	-0.580	27834.216338
142-114	-200936.362	-47966.389	1.824	100-47-24	181-18-04	-0.643	30833.308346
142-115	-200936.703	-47964.597	1.825	101-37-05	180-49-41	-0.709	33999.255322
142-116	-200937.070	-47962.810	1.827	102-48-14	181-11-09	-0.772	37041.418276
142-117	-200937.475	-47961.029	1.823	103-38-30	180-50-16	-0.835	40041.787993
142-118	-200937.905	-47959.257	1.831	104-29-44	180-51-14	-0.888	42608.572476
142-119	-200938.364	-47957.484	1.824	105-41-09	181-11-25	-0.952	45631.924559
142-120	-200938.857	-47955.728	1.826	106-40-29	180-59-20	-1.017	48768.033502
142-121	-200939.381	-47953.979	1.592	107-22-48	180-42-19	-0.999	47917.768338
142-122	-200939.856	-47952.460	1.781	108-40-08	181-17-20	-1.045	50129.469555
142-123	-200940.426	-47950.773	1.817	109-00-48	180-20-40	-1.162	55718.798226
142-124	-200941.018	-47949.055	1.813	110-20-03	181-19-15	-1.222	58593.745210
142-125	-200941.648	-47947.355	1.796	111-23-33	181-03-30	-1.285	61612.351175
142-126	-200942.303	-47945.683	1.799	112-22-30	180-58-57	-1.340	64247.215220
142-127	-200942.988	-47944.019	1.795	112-58-51	180-36-21	-1.386	66450.410334
142-128	-200943.689	-47942.366	1.813	114-18-10	181-19-19	-1.447	69372.603602
142-129	-200944.435	-47940.714	1.796	115-06-34	180-48-24	-1.508	72294.596712
142-130	-200945.197	-47939.088	0.808	115-34-56	180-28-22	-1.111	53260.326768
142-17	-200945.546	-47938.359	26.295	116-02-02	180-27-06	-11.890	569987.088510
142-1	-200957.087	-47914.732	4.997	71-14-52	135-12-50	-9.935	476015.937499
142-2	-200955.481	-47910.000	91.881	26-02-45	134-47-53	84.156	-4031933.093830
142-3	-200872.931	-47869.656	0.998	25-30-19	179-27-34	83.451	-3994780.861397
142-18	-200872.029	-47869.226	1.002	24-30-50	179-00-31	1.813	-86792.259459
142-19	-200871.117	-47868.810	0.999	23-20-04	178-49-14	1.829	-87545.602930
142-20	-200870.201	-47868.415	1.004	22-02-50	178-42-46	1.847	-88416.657192
142-22	-200869.270	-47868.038	0.996	20-45-29	178-42-39	1.862	-89126.905642
142-23	-200868.339	-47867.685	0.998	20-04-36	179-19-07	1.869	-89472.021248
142-24	-200867.401	-47867.342	0.999	18-30-08	178-25-32	1.885	-90240.024133
142-25	-200866.453	-47867.025	0.998	17-38-20	179-08-12	1.899	-90910.911030
142-26	-200865.502	-47866.723	0.998	16-34-17	178-55-57	1.908	-91322.306698

面積 (座標法) 計算書

地番: 142街区

測点	X	Y	距離	方向角	夾角	X - X	Y (X - X)
142-27	-200864.546	-47866.438	1.002	15-29-31	178-55-14	1.922	-91996.179328
142-28	-200863.580	-47866.170	1.000	14-02-59	178-33-28	1.935	-92628.548631
142-29	-200862.610	-47865.928	1.000	13-05-41	179-02-42	1.943	-93020.411175
142-30	-200861.637	-47865.701	1.003	12-09-55	179-04-14	1.954	-93538.907984
142-31	-200860.656	-47865.490	1.001	10-47-19	178-37-24	1.964	-93986.182293
142-32	-200859.673	-47865.303	0.997	9-58-21	179-11-02	1.965	-94049.634722
142-33	-200858.691	-47865.130	1.004	8-27-19	178-28-58	1.974	-94509.489538
142-34	-200857.699	-47864.982	1.031	7-56-10	179-28-51	2.013	-96371.136420
142-35	-200856.678	-47864.840	1.005	6-01-45	178-05-35	2.020	-96682.637664
142-36	-200855.679	-47864.735	0.996	5-30-32	179-28-47	1.990	-95257.902028
142-37	-200854.688	-47864.639	1.000	4-00-45	178-30-13	1.988	-95171.631094
142-38	-200853.690	-47864.569	1.000	2-50-10	178-49-25	1.996	-95545.845084
142-39	-200852.692	-47864.520	0.999	2-09-29	179-19-19	1.997	-95570.448712
142-40	-200851.694	-47864.482	0.994	0-53-41	178-44-12	1.992	-95350.896311
142-41	-200850.700	-47864.466	1.004	359-20-52	178-27-11	1.998	-95641.268195
142-42	-200849.696	-47864.478	0.997	358-24-25	179-03-33	2.001	-95753.020128
142-43	-200848.699	-47864.506	1.001	357-36-58	179-12-33	1.997	-95585.666109
142-44	-200847.699	-47864.547	1.000	356-03-48	178-26-50	1.998	-95638.742992
142-45	-200846.701	-47864.616	1.000	355-07-46	179-03-58	1.994	-95424.621395
142-46	-200845.705	-47864.701	0.998	353-46-58	178-39-12	1.988	-95164.047637
142-47	-200844.713	-47864.809	0.999	352-57-07	179-10-09	1.983	-94929.780020
142-48	-200843.722	-47864.931	0.995	351-45-07	178-48-00	1.975	-94549.390580
142-49	-200842.737	-47865.074	0.998	351-03-29	179-18-22	1.970	-94287.560390
142-50	-200841.752	-47865.229	0.994	349-07-42	178-04-13	1.962	-93905.186720
142-51	-200840.776	-47865.417	1.000	348-25-03	179-17-21	1.956	-93634.741605
142-132	-200839.796	-47865.617	0.910	347-36-05	179-11-02	1.869	-89458.268709
142-4	-200838.907	-47865.813	18.941	346-48-00	179-11-55	19.329	-925211.790532
142-5	-200820.466	-47870.138	4.011	347-23-02	180-35-02	22.354	-1070100.366500
142-87	-200816.552	-47871.014	3.982	348-25-21	181-02-19	7.815	-374116.063404
142-88	-200812.651	-47871.813	4.004	349-36-33	181-11-12	7.840	-375311.995109
142-89	-200808.712	-47872.536	4.008	350-50-58	181-14-25	7.896	-377990.782434
142-90	-200804.755	-47873.173	3.995	351-53-03	181-02-05	7.912	-378767.129063
142-91	-200800.801	-47873.737	4.000	352-59-15	181-06-12	7.925	-379386.979424
142-92	-200796.831	-47874.225	4.010	354-05-11	181-05-56	7.959	-381026.048799
142-93	-200792.842	-47874.638	3.980	355-12-14	181-07-03	7.956	-380868.659907
142-94	-200788.875	-47874.971	4.015	356-24-05	181-11-51	7.973	-381726.619204
142-95	-200784.868	-47875.223	4.005	357-26-13	181-02-08	8.008	-383384.011556
142-96	-200780.867	-47875.402	3.748	358-27-59	181-01-46	7.747	-370903.469048
142-6	-200777.121	-47875.503	34.757	359-06-58	180-38-59	38.499	-1843142.483178
142-7	-200742.369	-47876.039	0.968	359-22-39	180-15-41	35.721	-1710164.172761

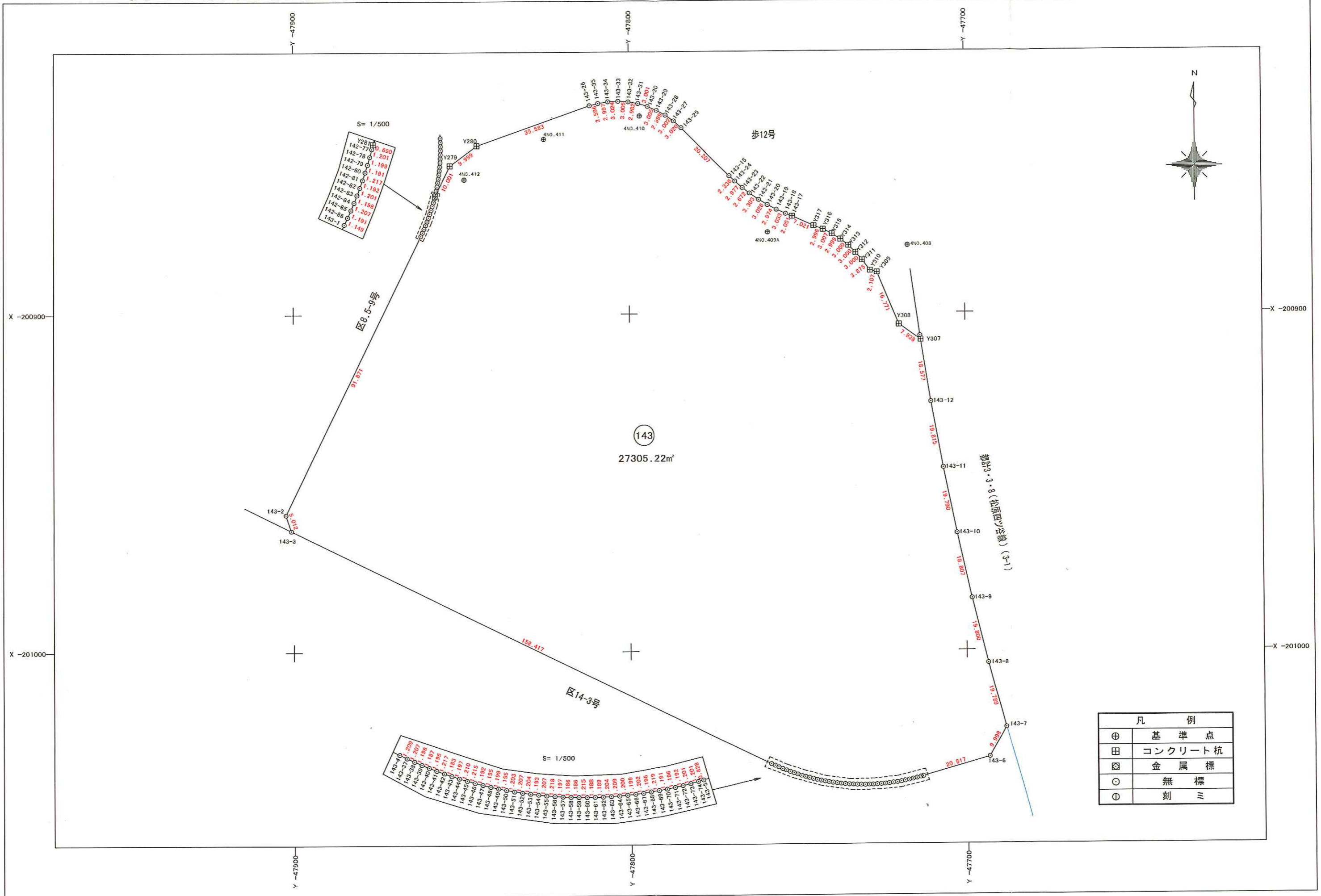
面積 (座標法) 計算書

地番: 142街区

測点	X	Y	距離	方向角	夾角	X - X	Y (X - X)
142-97	-200741.400	-47876.049	1.014	1-20-16	181-57-37	1.982	-94874.116469
142-98	-200740.387	-47876.026	1.012	3-15-23	181-55-07	2.024	-96900.934147
142-99	-200739.376	-47875.968	1.011	4-29-52	181-14-29	2.018	-96629.267195
142-100	-200738.369	-47875.889	1.012	6-02-29	181-32-37	2.014	-96405.279276
142-101	-200737.363	-47875.782	1.007	7-33-48	181-31-19	2.004	-95959.668838
142-102	-200736.364	-47875.650	1.015	9-00-02	181-26-14	2.001	-95797.700719
142-103	-200735.362	-47875.491	0.954	11-01-35	182-01-33	1.939	-92827.518819
142-104	-200734.425	-47875.309	0.720	11-52-43	180-51-08	1.641	-78571.272633
142-8	-200733.721	-47875.160	5.000	338-05-15	146-12-32	5.343	-255805.579983
142-9	-200729.082	-47877.026	83.617	301-10-40	143-05-25	47.927	-2294578.327685
142-10	-200685.794	-47948.566	5.985	274-52-10	153-41-30	43.796	-2099958.307013
142-11	-200685.286	-47954.529	24.419	248-14-10	153-22-00	-8.546	409819.404834
142-12	-200694.340	-47977.207	4.013	230-40-24	162-26-14	-11.597	556391.669579
142-131	-200696.883	-47980.311	95.104	212-44-45	162-04-21	-82.533	3959959.007763
142-13	-200776.873	-48031.754	3.991	188-36-23	155-51-38	-83.936	4031610.424662
合計			694.901		16740-00-00		-63510.003866
						倍面積	63510.003866
						面積	31755.001933
						地積	31755.00

街区確定測量図 (143街区)

縮尺 1 : 1000



凡 例	
⊕	基準点
⊗	コンクリート杭
⊘	金属標
○	無標
⊙	刻ミ

株式会社 田村測量設計事務所

都市再生機構 山形都市開発事務所

面積 (座標法) 計算書

地番: 143街区

測点	X	Y	距離	方向角	夾角	X - X	Y (X - X)
Y314	-200878.156	-47736.941	3.000	128-22-03	185-34-42	-3.486	166410.976326
Y313	-200880.018	-47734.589	3.000	134-06-31	185-44-28	-3.950	188551.626550
Y312	-200882.106	-47732.435	3.000	139-27-39	185-21-08	-4.368	208495.276080
Y311	-200884.386	-47730.485	3.875	142-41-54	183-14-15	-5.362	255930.860570
Y310	-200887.468	-47728.137	2.107	103-53-52	141-11-58	-3.588	171248.555556
Y309	-200887.974	-47726.092	16.771	157-20-49	233-26-57	-15.983	762810.593021
Y308	-200903.451	-47719.633	7.938	125-13-34	147-52-45	-20.056	957064.953982
Y307	-200908.030	-47713.148	18.577	170-47-16	225-33-42	-22.916	1093390.036193
143-12	-200926.367	-47710.174	19.815	169-39-42	178-52-26	-37.830	1804875.882420
143-11	-200945.860	-47706.618	19.790	168-32-02	178-52-20	-38.888	1855214.960784
143-10	-200965.255	-47702.684	19.807	167-25-23	178-53-21	-38.727	1847381.843268
143-9	-200984.587	-47698.371	19.800	166-17-55	178-52-32	-38.569	1839678.471099
143-8	-201003.824	-47693.681	19.789	165-10-33	178-52-38	-38.367	1829863.458927
143-7	-201022.954	-47688.618	9.998	209-08-57	223-58-24	-27.862	1328700.274716
143-6	-201031.686	-47693.488	20.517	253-48-12	224-39-15	-14.455	689409.369040
143-5	-201037.409	-47713.191	0.828	254-04-59	180-16-47	-5.950	283893.486450
143-74	-201037.636	-47713.987	1.201	255-05-46	181-00-47	-0.536	25574.697032
143-73	-201037.945	-47715.148	1.201	255-52-58	180-47-12	-0.602	28724.519096
143-72	-201038.238	-47716.313	1.192	257-23-53	181-30-55	-0.553	26387.121089
143-71	-201038.498	-47717.476	1.196	258-16-36	180-52-43	-0.503	24001.890428
143-70	-201038.741	-47718.647	1.191	259-27-15	181-10-39	-0.461	21998.296267
143-69	-201038.959	-47719.818	1.219	260-36-26	181-09-11	-0.417	19899.164106
143-68	-201039.158	-47721.021	1.196	261-44-04	181-07-38	-0.371	17704.498791
143-67	-201039.330	-47722.205	1.202	262-58-32	181-14-28	-0.319	15223.383395
143-66	-201039.477	-47723.398	1.199	264-03-58	181-05-26	-0.271	12933.040858
143-65	-201039.601	-47724.591	1.200	264-58-43	180-54-45	-0.229	10928.931339
143-64	-201039.706	-47725.786	1.209	265-55-16	180-56-33	-0.191	9115.625126
143-63	-201039.792	-47726.992	1.204	266-54-17	180-59-01	-0.151	7206.775792
143-62	-201039.857	-47728.194	1.189	268-24-37	181-30-20	-0.098	4677.363012
143-61	-201039.890	-47729.383	1.188	269-13-42	180-49-05	-0.049	2338.739767
143-60	-201039.906	-47730.571	1.215	270-36-47	181-23-05	-0.003	143.191713
143-59	-201039.893	-47731.786	1.186	271-32-44	180-55-57	0.045	-2147.930370
143-58	-201039.861	-47732.972	1.186	272-30-45	180-58-01	0.084	-4009.569648
143-57	-201039.809	-47734.157	1.197	273-41-12	181-10-27	0.129	-6157.706253
143-56	-201039.732	-47735.352	1.218	274-45-21	181-04-09	0.178	-8496.892656
143-55	-201039.631	-47736.566	1.207	275-50-51	181-05-30	0.224	-10692.990784
143-54	-201039.508	-47737.767	1.193	276-58-55	181-08-04	0.268	-12793.721556
143-53	-201039.363	-47738.951	1.204	278-04-10	181-05-15	0.314	-14990.030614
143-52	-201039.194	-47740.143	1.207	279-00-35	180-56-25	0.358	-17090.971194
143-51	-201039.005	-47741.335	1.203	280-17-31	181-16-56	0.404	-19287.499340

面積 (座標法) 計算書

地番: 143街区

測点	X	Y	距離	方向角	夾角	X - X	Y (X - X)
143-50	-201038.790	-47742.519	1.195	281-20-17	181-02-46	0.450	-21484.133550
143-49	-201038.555	-47743.691	1.199	282-31-44	181-11-27	0.495	-23633.127045
143-48	-201038.295	-47744.861	1.195	283-35-40	181-03-56	0.541	-25829.969801
143-47	-201038.014	-47746.023	1.192	284-31-33	180-55-53	0.580	-27692.693340
143-46	-201037.715	-47747.177	1.215	285-36-54	181-05-21	0.626	-29889.732802
143-45	-201037.388	-47748.347	1.210	286-31-04	180-54-10	0.671	-32039.140837
143-44	-201037.044	-47749.507	1.197	287-54-19	181-23-15	0.712	-33997.648984
143-43	-201036.676	-47750.646	1.183	288-56-25	181-02-06	0.752	-35908.485792
143-42	-201036.292	-47751.765	1.217	289-50-04	180-53-39	0.797	-38058.156705
143-41	-201035.879	-47752.910	1.195	291-05-21	181-15-17	0.843	-40255.703130
143-40	-201035.449	-47754.025	1.187	292-32-44	181-27-23	0.885	-42262.312125
143-39	-201034.994	-47755.121	1.198	293-12-18	180-39-34	0.927	-44268.997167
143-38	-201034.522	-47756.222	1.207	294-31-35	181-19-17	0.973	-46466.804006
143-37	-201034.021	-47757.320	1.209	295-18-53	180-47-18	1.018	-48616.951760
143-4	-201033.504	-47758.413	158.417	296-02-53	180-44-00	70.082	-3347005.099866
143-3	-200963.939	-47900.739	5.012	341-05-42	225-02-49	74.307	-3559360.212873
143-2	-200959.197	-47902.363	91.871	26-02-55	224-57-13	87.281	-4180943.121690
143-1	-200876.658	-47862.019	1.149	25-03-40	179-00-45	83.579	-4000269.775646
142-86	-200875.618	-47861.533	1.191	24-40-51	179-37-11	2.123	-101599.879765
142-85	-200874.536	-47861.035	1.207	23-16-35	178-35-44	2.191	-104856.464967
142-84	-200873.427	-47860.559	1.198	21-55-11	178-38-36	2.220	-106273.069373
142-83	-200872.315	-47860.111	1.201	20-54-14	178-59-03	2.233	-106895.246277
142-82	-200871.193	-47859.683	1.192	19-48-30	178-54-16	2.243	-107342.696271
142-81	-200870.072	-47859.279	1.217	18-28-18	178-39-48	2.275	-108889.511348
142-80	-200868.918	-47858.893	1.191	17-34-01	179-05-43	2.289	-109569.834718
142-79	-200867.783	-47858.534	1.199	16-23-07	178-49-06	2.285	-109376.703327
142-78	-200866.633	-47858.196	1.201	14-49-54	178-26-47	2.311	-110595.240524
142-77	-200865.472	-47857.888	0.690	14-14-31	179-24-37	1.830	-87580.604877
Y281	-200864.803	-47857.719	10.001	26-32-43	192-18-12	9.616	-460201.143610
Y279	-200855.856	-47853.249	9.999	53-48-10	207-15-27	14.852	-710707.430939
Y280	-200849.951	-47845.180	35.583	70-37-21	196-49-11	17.711	-847385.982980
143-26	-200838.145	-47811.613	2.596	75-14-47	184-37-26	12.467	-596067.379271
143-35	-200837.484	-47809.103	2.997	80-41-19	185-26-32	1.146	-54789.232038
143-34	-200836.999	-47806.145	3.024	87-29-53	186-48-34	0.617	-29496.391465
143-33	-200836.867	-47803.124	3.005	93-46-43	186-16-50	-0.066	3155.006184
143-32	-200837.065	-47800.126	2.982	100-04-53	186-18-10	-0.720	34416.090720
143-31	-200837.587	-47797.190	3.001	106-17-49	186-12-56	-1.364	65195.367160
143-30	-200838.429	-47794.310	3.005	113-04-33	186-46-44	-2.020	96544.506200
143-29	-200839.607	-47791.545	2.999	119-14-25	186-09-52	-2.643	126313.053435
143-28	-200841.072	-47788.928	3.002	125-28-08	186-13-43	-3.207	153259.092096

面積 (座標法) 計算書

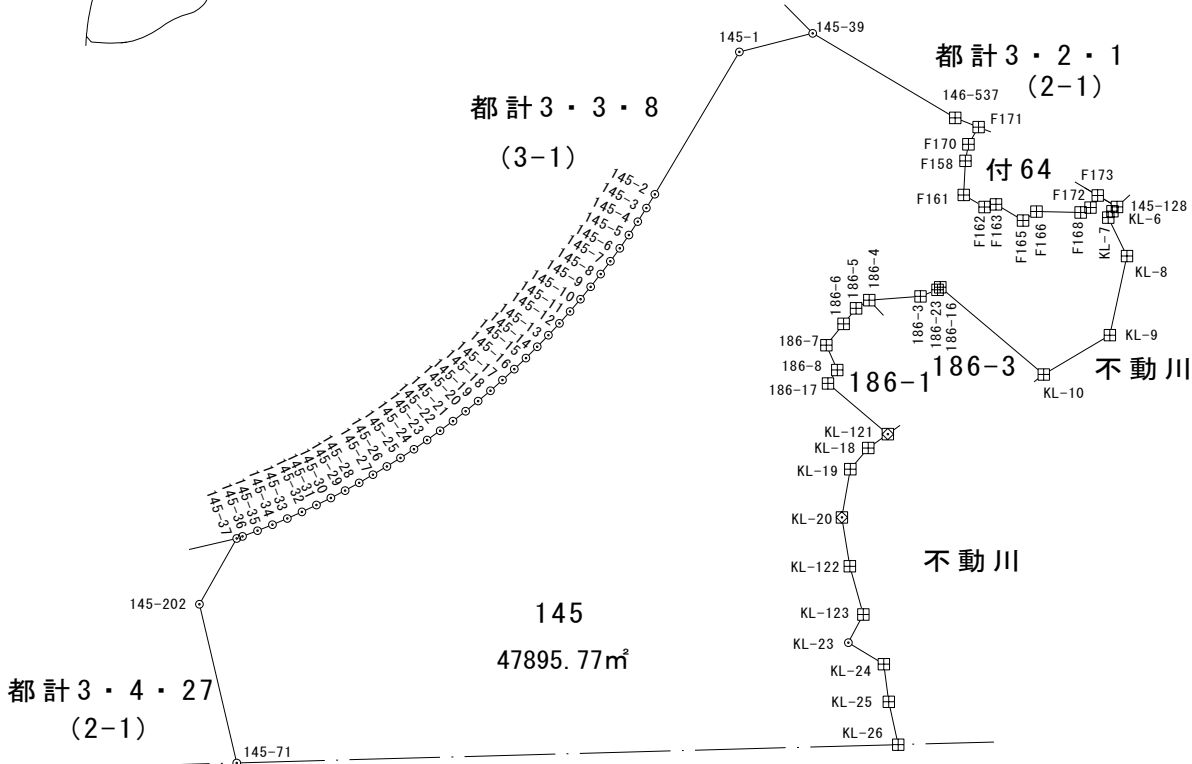
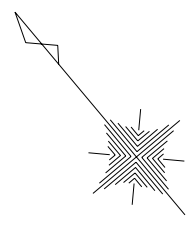
地番: 143街区

測点	X	Y	距離	方向角	夾角	X - X	Y (X - X)
143-27	-200842.814	-47786.483	3.020	131-57-12	186-29-04	-3.761	179724.962563
143-25	-200844.833	-47784.237	20.207	135-08-32	183-11-20	-16.343	780937.785291
143-15	-200859.157	-47769.984	2.336	133-44-02	178-35-30	-15.939	761405.774976
143-24	-200860.772	-47768.296	2.977	131-07-54	177-23-52	-3.573	170676.121608
143-23	-200862.730	-47766.054	2.672	128-05-02	176-57-08	-3.606	172244.390724
143-22	-200864.378	-47763.951	3.303	124-28-45	176-23-43	-3.518	168033.579618
143-21	-200866.248	-47761.228	3.026	121-14-12	176-45-27	-3.439	164250.863092
143-20	-200867.817	-47758.641	2.974	118-01-17	176-47-05	-2.966	141652.129206
143-19	-200869.214	-47756.016	3.033	114-46-26	176-45-09	-2.668	127413.050688
143-18	-200870.485	-47753.262	2.051	111-52-27	177-06-01	-2.035	97177.888170
143-17	-200871.249	-47751.359	7.021	114-01-53	182-09-26	-3.623	173003.173657
Y317	-200874.108	-47744.947	2.996	111-07-36	177-05-43	-3.939	188067.346233
Y316	-200875.188	-47742.152	3.007	116-32-53	185-25-17	-2.424	115726.976448
Y315	-200876.532	-47739.462	2.999	122-47-21	186-14-28	-2.968	141690.723216
合計			645.966		17280-00-00		54610.447211
						倍面積	-54610.447211
						面積	27305.223605
						地積	27305.22

地番 145

土地の所在 山形市大字松原

縮尺 S=1:2000

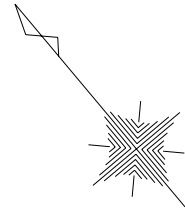


凡 例	
田	コンクリート杭
⊗	金属標
○	無 標

地番 145

土地の所在 山形市大字松原

縮尺 S=1:2000



都計3・4・27
(2-1)

145
47895.77m²

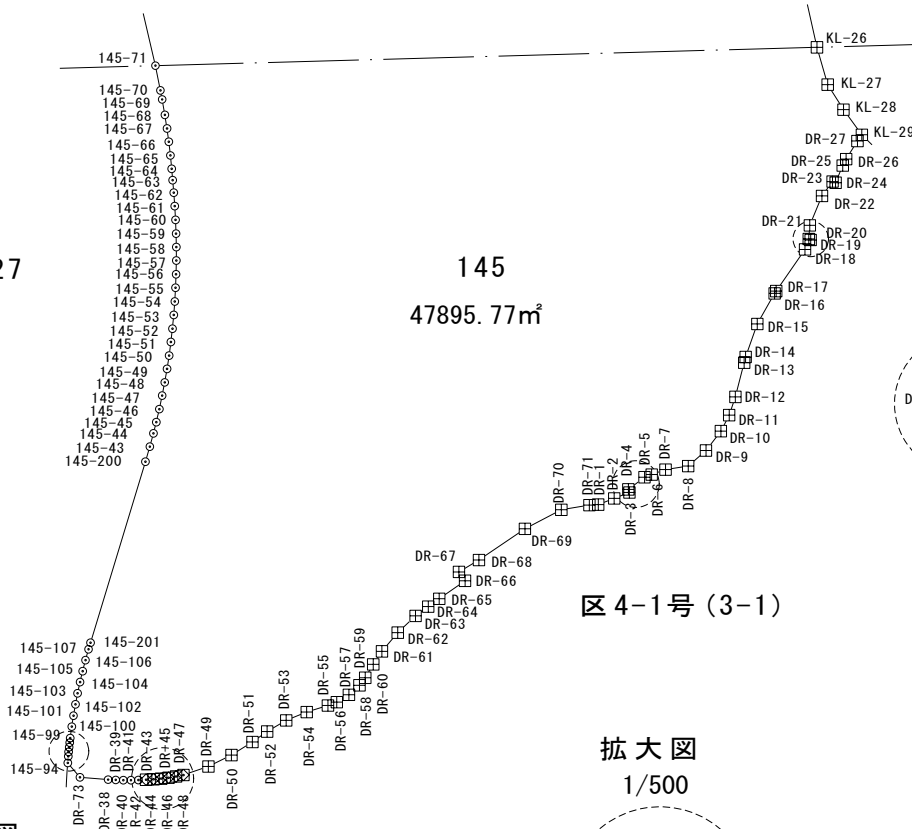
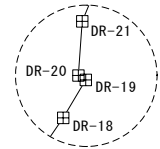
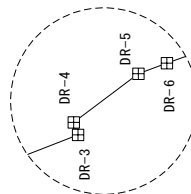
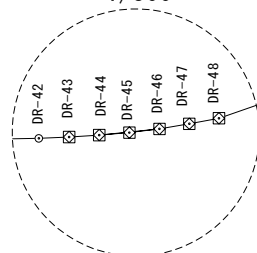
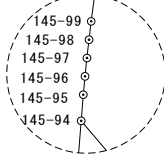
拡大図
1/500

区4-1号(3-1)

拡大図
1/500

拡大図
1/500

拡大図
1/500



不動川

凡 例	
田	コンクリート杭
☒	金属標
○	無 標

地番 145

土地の所在 山形市大字松原

縮尺 S=1:2000

地番	145			
測点	Xn	Yn	(Xn+1 - Xn-1)Yn	距離
145-202	-200627.362	-47221.183	2148563.826500	43.139
145-71	-200665.874	-47240.620	2095877.346920	6.671
145-70	-200671.728	-47243.819	377052.919439	2.434
145-69	-200673.855	-47245.002	270430.391448	4.156
145-68	-200677.452	-47247.083	317547.644843	3.648
145-67	-200680.576	-47248.967	288880.184238	3.536
145-66	-200683.566	-47250.854	285395.158160	3.649
145-65	-200686.616	-47252.858	282477.585124	3.551
145-64	-200689.544	-47254.867	255885.104805	3.044
145-63	-200692.031	-47256.622	244931.071826	3.293
145-62	-200694.727	-47258.513	265214.774956	3.592
145-61	-200697.643	-47260.611	275860.186407	3.640
145-60	-200700.564	-47262.783	274313.192532	3.651
145-59	-200703.447	-47265.023	266952.849904	3.553
145-58	-200706.212	-47267.254	259733.560730	3.561
145-57	-200708.942	-47269.540	258706.192420	3.641
145-56	-200711.685	-47271.934	254512.092656	3.562
145-55	-200714.326	-47274.324	249844.802340	3.637
145-54	-200716.970	-47276.822	244941.214782	3.551
145-53	-200719.507	-47279.306	241502.695048	3.656
145-52	-200722.078	-47281.905	237213.317385	3.554
145-51	-200724.524	-47284.483	231788.535666	3.647
145-50	-200726.980	-47287.179	226836.597663	3.544
145-49	-200729.321	-47289.840	221552.900400	3.636
145-48	-200731.665	-47292.620	217309.588900	3.565
145-47	-200733.916	-47295.385	212781.937115	3.647
145-46	-200736.164	-47298.257	207213.663917	3.561
145-45	-200738.297	-47301.109	185278.443953	3.037
145-44	-200740.081	-47303.567	182875.590022	3.648
145-43	-200742.163	-47306.562	208148.872800	4.166
145-200	-200744.481	-47310.024	1402600.281528	50.042
145-201	-200771.810	-47351.944	1341385.869632	1.815
145-107	-200772.809	-47353.459	126765.209743	2.971
145-106	-200774.487	-47355.911	163330.537039	3.044
145-105	-200776.258	-47358.387	167269.822884	2.947
145-104	-200778.019	-47360.750	171351.193500	3.042
145-103	-200779.876	-47363.159	176380.404116	2.968
145-102	-200781.743	-47365.466	181362.369314	3.053
145-101	-200783.705	-47367.805	184639.703890	2.940
145-100	-200785.641	-47370.018	188959.001802	3.048
145-99	-200787.694	-47372.271	136811.118648	1.220
145-98	-200788.529	-47373.160	79397.416160	1.222
145-97	-200789.370	-47374.046	80062.137740	1.220
145-96	-200790.219	-47374.922	80679.492166	1.216
145-95	-200791.073	-47375.788	99110.148496	1.742
145-94	-200792.311	-47377.013	295158.790990	4.992
DR-73	-200797.303	-47376.971	486324.607315	7.501
DR-38	-200802.576	-47371.636	313979.203408	2.000
DR-39	-200803.931	-47370.165	126952.042200	2.001
DR-40	-200805.256	-47368.665	124011.164970	2.008
DR-41	-200806.549	-47367.129	120928.280337	1.995
DR-42	-200807.809	-47365.582	117419.277778	2.007
DR-43	-200809.028	-47363.987	113815.660761	1.994
DR-44	-200810.212	-47362.383	110780.613837	1.998
DR-45	-200811.367	-47360.753	106514.333497	2.008
DR-46	-200812.461	-47359.069	99548.763038	2.001
DR-47	-200813.469	-47357.340	94241.106600	1.997
DR-48	-200814.451	-47355.601	164939.558283	6.979
DR-49	-200816.952	-47349.086	194746.790718	6.792
DR-50	-200818.564	-47342.488	119445.097224	6.545
DR-51	-200819.475	-47336.007	61584.145107	4.788
DR-52	-200819.865	-47331.235	65222.441830	5.824
DR-53	-200820.853	-47325.495	131375.574120	5.857
DR-54	-200822.641	-47319.918	193065.265440	5.880

地 番 145

土地の所在 山形市大字松原

縮尺 S=1:2000

地 番	145			
測 点	Xn	Yn	(Xn+1 - Xn-1)Yn	距 離
DR-55	-200824.933	-47314.503	146911.531815	2.509
DR-56	-200825.746	-47312.129	64864.928859	3.740
DR-57	-200826.304	-47308.431	21146.868657	3.758
DR-58	-200826.193	-47304.675	-31694.132250	2.509
DR-59	-200825.634	-47302.229	-90914.884138	4.135
DR-60	-200824.271	-47298.325	-118718.795750	4.149
DR-61	-200823.124	-47294.338	-106979.792556	6.465
DR-62	-200822.009	-47287.970	-69844.331690	6.488
DR-63	-200821.647	-47281.492	-3924.363836	4.149
DR-64	-200821.926	-47277.352	26286.207712	3.575
DR-65	-200822.203	-47273.788	48550.180276	8.332
DR-66	-200822.953	-47265.490	-97981.360770	2.835
DR-67	-200820.130	-47265.231	-86873.494578	6.171
DR-68	-200821.115	-47259.139	117060.887303	14.702
DR-69	-200822.607	-47244.513	179765.371965	10.852
DR-70	-200824.920	-47233.910	291008.119510	7.539
DR-71	-200828.768	-47227.427	247424.490053	2.344
DR-1	-200830.159	-47225.540	134923.367780	4.543
DR-2	-200831.625	-47221.240	134627.755240	4.304
DR-3	-200833.010	-47217.165	26961.001215	0.872
DR-4	-200832.196	-47216.853	-24977.715237	5.354
DR-5	-200832.481	-47211.507	45559.104255	2.011
DR-6	-200833.161	-47209.614	96024.354876	3.901
DR-7	-200834.515	-47205.956	212190.772220	6.072
DR-8	-200837.656	-47200.759	141791.080036	6.260
DR-9	-200837.519	-47194.500	-72396.363000	6.453
DR-10	-200836.122	-47188.200	-152323.509600	4.774
DR-11	-200834.291	-47183.791	-210675.626815	5.097
DR-12	-200831.657	-47179.427	-381304.129014	9.348
DR-13	-200826.209	-47171.831	-299541.126850	1.551
DR-14	-200825.307	-47170.569	-265240.109487	9.284
DR-15	-200820.586	-47162.575	-375366.934425	9.282
DR-16	-200817.348	-47153.876	-161973.564060	0.744
DR-17	-200817.151	-47153.159	-176541.427296	13.394
DR-18	-200813.604	-47140.243	-212366.794715	2.922
DR-19	-200812.646	-47137.483	-70470.537085	0.570
DR-20	-200812.109	-47137.673	-147116.677433	3.594
DR-21	-200809.525	-47135.175	-304823.176725	8.438
DR-22	-200805.642	-47127.684	-236062.569156	4.712
DR-23	-200804.516	-47123.109	-17199.934785	0.871
DR-24	-200805.277	-47122.685	-70401.291390	4.914
DR-25	-200803.022	-47118.319	-140553.945577	1.929
DR-26	-200802.294	-47116.533	-116472.069576	5.645
DR-27	-200800.550	-47111.164	-106753.897624	2.028
KL-29	-200800.028	-47109.204	-410745.149676	8.215
KL-28	-200791.831	-47108.664	-753597.298008	7.872
KL-27	-200784.031	-47107.600	-808837.492000	10.250
KL-26	-200774.661	-47103.444	-926430.536592	11.615
KL-25	-200764.363	-47098.072	-883371.438432	10.033
KL-24	-200755.905	-47092.675	-887555.645725	10.974
KL-23	-200745.516	-47096.210	-638294.934130	8.453
KL-123	-200742.352	-47088.371	-717485.508927	13.244
KL-122	-200730.279	-47082.925	-1098774.220725	13.117
KL-20	-200719.015	-47076.203	-923635.102860	12.955
KL-19	-200710.659	-47066.303	-451648.243588	7.340
KL-18	-200709.419	-47059.069	-33411.938990	6.355
KL-121	-200709.949	-47052.736	-937196.395648	20.747
186-17	-200689.501	-47056.245	-1016461.948245	4.331
186-8	-200688.348	-47052.070	-378063.382450	7.163
186-7	-200681.466	-47050.084	-389856.996024	7.282
186-6	-200680.062	-47042.939	-113702.783563	5.256
186-5	-200679.049	-47037.782	-19802.906222	4.102
186-4	-200679.641	-47033.723	401573.926974	13.592
186-3	-200687.587	-47022.696	446762.634696	4.829

地 番 145

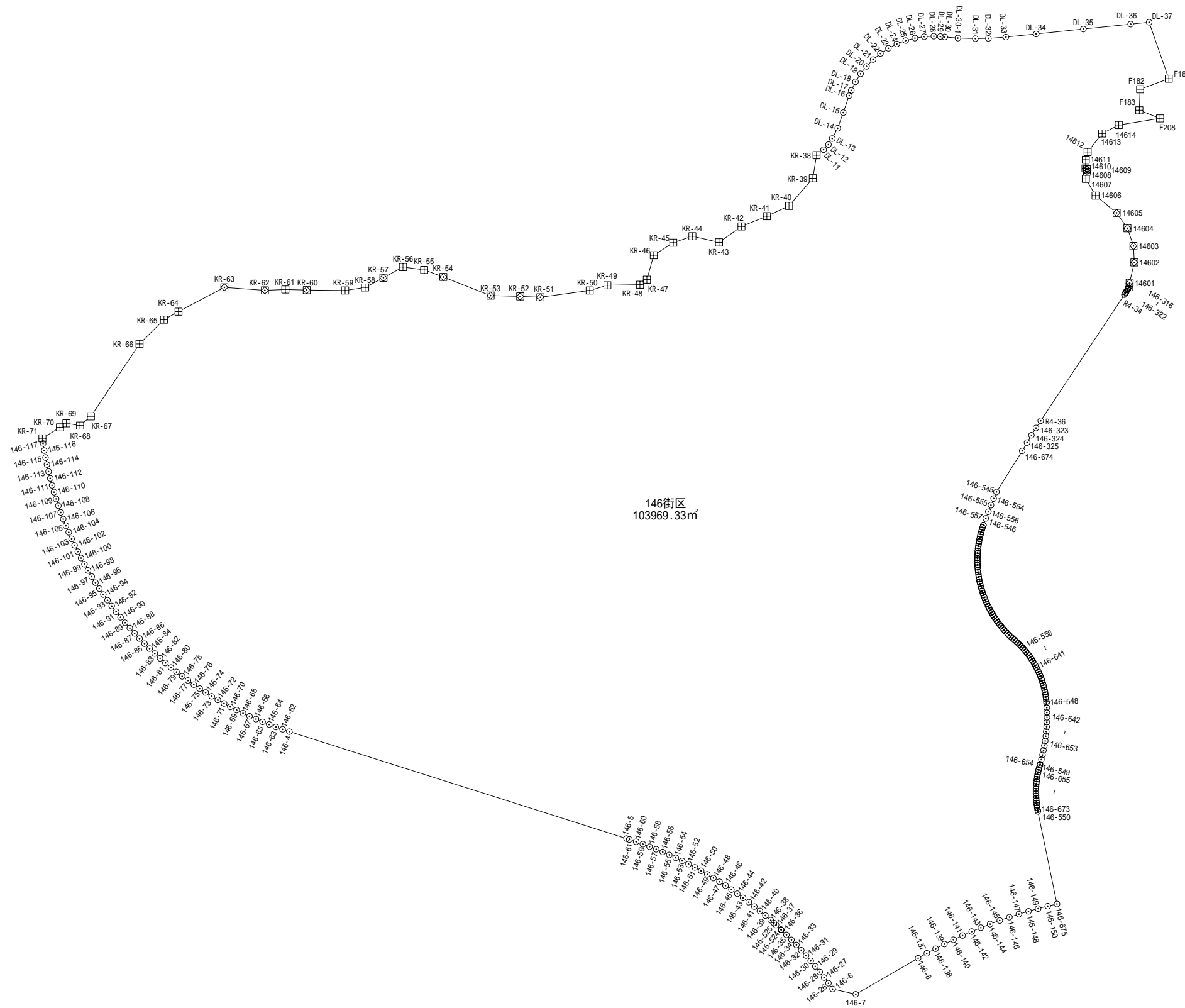
土地の所在 山形市大字松原

縮尺 S=1:2000

地 番	145			
測 点	Xn	Yn	(Xn+1 - Xn-1)Yn	距 離
186-23	-200689.142	-47018.124	70997.367240	0.997
186-16	-200689.097	-47017.128	1656131.316672	35.800
KL-10	-200724.366	-47010.987	1812226.537863	20.356
KL-9	-200727.646	-46990.897	-462719.362759	21.423
KL-8	-200714.519	-46973.967	-1133106.031974	11.332
KL-7	-200703.524	-46971.226	-543551.027272	2.000
KL-6	-200702.947	-46969.311	-31187.622504	1.667
145-128	-200702.860	-46967.646	-267011.067510	5.931
F173	-200697.262	-46969.604	-204975.351856	3.736
F172	-200698.496	-46973.130	25130.624550	2.896
F168	-200697.797	-46975.940	-393329.545620	11.698
F166	-200690.123	-46984.769	-383113.806426	4.253
F165	-200689.643	-46988.995	-392593.053225	8.339
F163	-200681.768	-46991.738	-437117.146876	3.131
F162	-200680.341	-46994.525	-347242.545225	6.340
F161	-200674.379	-46996.681	-590419.303403	9.034
F158	-200667.778	-46990.514	-445892.987346	4.479
F170	-200664.890	-46987.090	-217362.278340	5.261
F171	-200663.152	-46982.124	-356547.339036	6.655
146-537	-200657.301	-46985.295	-2219303.424030	43.843
145-39	-200615.918	-46999.773	-2353372.633656	20.008
145-1	-200607.229	-47017.796	272044.967656	43.842
145-2	-200621.704	-47059.180	745370.352020	4.260
145-3	-200623.068	-47063.216	124905.775264	4.250
145-4	-200624.358	-47067.266	117479.895936	4.258
145-5	-200625.564	-47071.350	110099.887650	4.258
145-6	-200626.697	-47075.454	101118.075192	4.242
145-7	-200627.712	-47079.573	93217.554540	4.262
145-8	-200628.677	-47083.724	86681.135884	4.263
145-9	-200629.553	-47087.896	77977.555776	4.253
145-10	-200630.333	-47092.077	69743.366037	4.248
145-11	-200631.034	-47096.267	61837.398571	4.249
145-12	-200631.646	-47100.472	53459.035720	4.254
145-13	-200632.169	-47104.694	46068.390732	4.253
145-14	-200632.624	-47108.923	38205.336553	4.247
145-15	-200632.980	-47113.155	29822.627115	4.249
145-16	-200633.257	-47117.395	21815.353885	4.249
145-17	-200633.443	-47121.640	14466.343480	4.249
145-18	-200633.564	-47125.887	6456.246519	4.260
145-19	-200633.580	-47130.147	-2450.767644	4.242
145-20	-200633.512	-47134.388	-10510.968524	4.258
145-21	-200633.357	-47138.643	-18336.932127	4.254
145-22	-200633.123	-47142.891	-25787.161377	4.247
145-23	-200632.810	-47147.126	-34040.224972	4.251
145-24	-200632.401	-47151.357	-42907.734870	4.253
145-25	-200631.900	-47155.580	-51965.449160	4.247
145-26	-200631.299	-47159.784	-60223.044168	4.247
145-27	-200630.623	-47163.977	-65133.452237	4.242
145-28	-200629.918	-47168.160	-72214.452960	4.252
145-29	-200629.092	-47172.331	-82504.406919	4.247
145-30	-200628.169	-47176.477	-91428.012426	4.243
145-31	-200627.154	-47180.597	-98465.905939	4.256
145-32	-200626.082	-47184.716	-104750.069520	4.252
145-33	-200624.934	-47188.810	-113819.409720	4.253
145-34	-200623.670	-47192.871	-122040.764406	4.244
145-35	-200622.348	-47196.904	-128753.154112	4.252
145-36	-200620.942	-47200.917	-93174.610158	1.628
145-37	-200620.374	-47202.443	303039.684060	20.000
		倍 面 積	95791.553847	
		面 積	47895.7769235	
		地 積	47895.77	m ²

使用機種 ; W i n g n e o 測 量 計 算 シ ス テ ム

計算式 ; 面積 = $\sum \{ (X_{n+1} - X_{n-1}) Y_n \} / 2 \quad n=1, 2, 3, \dots, N$



凡 例	
⊠	コンクリート杭
⊞	金 属 標
○	無 標

地番	146街区			
測点	X _n	Y _n	(X _{n+1} - X _{n-1}) Y _n	距離
DL-37	-200743.854	-46953.254	-1079173.59294368	7.815
DL-36	-200744.659	-46961.028	134542.70889807	19.998
DL-35	-200746.719	-46980.920	193608.37132000	19.999
DL-34	-200748.780	-47000.813	158768.74631400	12.784
DL-33	-200750.097	-47013.529	87257.10982400	7.365
DL-32	-200750.636	-47020.874	30610.58897400	5.522
DL-31	-200750.748	-47026.395	-5549.11461000	7.356
DL-30-1	-200750.518	-47033.747	-33158.79163500	5.546
DL-30	-200750.043	-47039.273	-30716.64526900	1.882
DL-29	-200749.865	-47041.147	-14253.46754100	2.741
DL-28	-200749.740	-47043.885	2963.76475500	4.000
DL-27	-200749.928	-47047.881	37591.25691900	3.999
DL-26	-200750.539	-47051.833	77306.16161900	4.000
DL-25	-200751.571	-47055.698	116086.40696600	4.000
DL-24	-200753.006	-47059.432	153413.74832000	4.000
DL-23	-200754.831	-47062.991	189146.16082900	3.999
DL-22	-200757.025	-47066.335	223000.29523000	4.000
DL-21	-200759.569	-47069.422	253751.25400200	3.999
DL-20	-200762.416	-47072.231	281586.08584200	4.000
DL-19	-200765.551	-47074.715	306785.91765500	4.000
DL-18	-200768.933	-47076.851	328219.80517200	4.000
DL-17	-200772.523	-47078.615	273385.51730500	2.379
DL-16	-200774.740	-47079.478	440899.31147000	7.582
DL-15	-200781.888	-47082.005	645117.63251000	6.952
DL-14	-200788.442	-47084.322	512277.42336000	4.901
DL-13	-200792.768	-47086.626	323485.12062000	3.003
DL-12	-200795.312	-47088.221	221455.90336300	2.979
DL-11	-200797.471	-47090.273	210446.43003700	3.753
DL-38	-200799.781	-47093.231	565966.45015800	9.836
KR-39	-200809.489	-47094.813	1005097.49904600	15.333
KR-40	-200821.123	-47104.801	751886.83356200	10.270
KR-41	-200825.451	-47114.115	407254.41006000	11.570
KR-42	-200829.767	-47124.850	518137.72575000	11.537
KR-43	-200836.446	-47134.257	192779.11113000	11.545
KR-44	-200833.857	-47145.508	7637.57229600	8.466
KR-45	-200836.608	-47153.515	378406.95787500	9.776
KR-46	-200841.882	-47161.746	733035.01807800	10.670
KR-47	-200852.151	-47164.643	582907.82283700	3.571
KR-48	-200854.241	-47167.538	110985.21691400	13.729
KR-49	-200854.504	-47181.264	114980.74036800	7.758
KR-50	-200856.678	-47188.711	237406.40504100	20.964
KR-51	-200859.535	-47209.479	118023.69750000	8.476
KR-52	-200859.178	-47217.947	-32863.69111200	12.480
KR-53	-200858.839	-47230.422	-386203.16069400	21.363
KR-54	-200851.001	-47250.295	-511106.44101500	8.613
KR-55	-200848.022	-47258.376	-196594.84416000	8.998
KR-56	-200846.841	-47267.296	155509.40384000	9.363
KR-57	-200851.312	-47275.522	406616.76472200	8.734
KR-58	-200855.442	-47283.218	254100.01353200	8.518
KR-59	-200856.686	-47291.645	51264.14318000	16.151
KR-60	-200856.526	-47307.795	-19443.50374500	9.018
KR-61	-200856.275	-47316.810	5867.28444000	8.620
KR-62	-200856.650	-47325.422	-42924.15775400	17.092
KR-63	-200855.368	-47342.466	422578.85151600	21.850
KR-64	-200865.576	-47361.785	643646.65815000	6.959
KR-65	-200868.958	-47367.867	644676.66987000	14.530
KR-66	-200879.186	-47378.187	1927913.18540400	36.694
KR-67	-200909.650	-47398.641	1627764.12922200	6.003
KR-68	-200913.528	-47403.223	138132.99182200	5.823

地番	146街区			
測点	X _n	Y _n	(X _{n+1} - X _{n-1}) Y _n	距離
KR-69	-200912.564	-47408.966	34987.81690800	3.196
KR-70	-200914.266	-47411.671	300798.55855484	8.732
KR-71	-200918.908	-47419.067	321773.14730576	2.165
146-117	-200921.052	-47418.765	242041.65727185	3.000
146-116	-200924.013	-47418.280	280644.05725228	3.006
146-115	-200926.970	-47417.740	279229.53102098	2.992
146-114	-200929.901	-47417.139	277913.41653738	3.003
146-113	-200932.831	-47416.480	277096.25935869	3.000
146-112	-200935.745	-47415.769	275661.82455109	3.002
146-111	-200938.645	-47414.994	274159.70502578	2.999
146-110	-200941.527	-47414.164	272348.96899785	2.995
146-109	-200944.389	-47413.281	270611.86827301	2.999
146-108	-200947.235	-47412.336	268992.81650085	2.999
146-107	-200950.062	-47411.336	267175.53888023	3.001
146-106	-200952.870	-47410.276	265214.80566846	3.000
146-105	-200955.657	-47409.164	263019.50434420	3.000
146-104	-200958.418	-47407.992	261385.69898260	3.011
146-103	-200961.170	-47406.770	259399.84693570	3.004
146-102	-200963.890	-47405.495	255989.06981510	2.994
146-101	-200966.570	-47404.162	253407.55188517	3.000
146-100	-200969.236	-47402.785	251024.78542690	2.997
146-99	-200971.866	-47401.348	248125.65103562	3.000
146-98	-200974.470	-47399.860	245549.96850558	3.001
146-97	-200977.046	-47398.321	242872.21176506	2.999
146-96	-200979.594	-47396.739	239568.55696534	2.995
146-95	-200982.101	-47395.099	236581.98731079	3.009
146-94	-200984.586	-47393.403	233478.22177461	2.998
146-93	-200987.027	-47391.663	229964.70187202	2.998
146-92	-200989.438	-47389.882	226750.43556524	2.997
146-91	-200991.812	-47388.051	223005.39686630	2.999
146-90	-200994.144	-47386.165	219553.06447535	2.999
146-89	-200996.445	-47384.241	215976.26304617	2.999
146-88	-200998.702	-47382.267	212286.83780017	3.002
146-87	-201000.925	-47380.249	208742.69838418	3.004
146-86	-201003.108	-47378.185	204577.83288331	2.997
146-85	-201005.243	-47376.083	200503.17094997	2.998
146-84	-201007.340	-47373.940	196970.51485472	3.004
146-83	-201009.401	-47371.755	192936.30845208	3.001
146-82	-201011.413	-47369.528	188046.53745620	2.997
146-81	-201013.371	-47367.258	184041.07173786	3.007
146-80	-201015.298	-47364.950	179973.45319204	2.993
146-79	-201017.171	-47362.615	175055.42535710	2.997
146-78	-201018.994	-47360.237	170474.45422950	3.007
146-77	-201020.770	-47357.811	165995.97769919	3.007
146-76	-201022.500	-47355.351	161113.22890923	2.991
146-75	-201024.172	-47352.871	156788.04489385	3.002
146-74	-201025.811	-47350.356	152749.69203340	3.001
146-73	-201027.398	-47347.809	147705.19242300	2.998
146-72	-201028.930	-47345.232	142658.45506329	2.996
146-71	-201030.411	-47342.627	137463.29332968	3.005
146-70	-201031.834	-47339.980	132212.22168278	3.004
146-69	-201033.204	-47337.307	127624.82796705	2.995
146-68	-201034.530	-47334.621	122896.73708004	3.005
146-67	-201035.801	-47331.898	117239.97005244	2.996
146-66	-201037.007	-47329.155	111397.78559066	2.993
146-65	-201038.154	-47326.390	106824.11347972	3.002
146-64	-201039.264	-47323.601	102431.51908110	3.002
146-63	-201040.319	-47320.791	96498.37651643	3.000
146-62	-201041.303	-47317.957	91242.27822167	3.003

地番	146街区			
測点	X _n	Y _n	(X _{n+1} - X _{n-1}) Y _n	距離
146-4	-201042.247	-47315.106	2173404.73550488	148.844
146-5	-201087.238	-47173.225	2140680.95781070	1.272
146-61	-201087.626	-47172.013	63136.87899041	3.003
146-60	-201088.576	-47169.164	92517.07073068	3.002
146-59	-201089.588	-47166.338	97301.66565011	3.003
146-58	-201090.639	-47163.526	101510.67734255	3.003
146-57	-201091.740	-47160.732	106391.26324506	2.992
146-56	-201092.895	-47157.972	111450.18692755	3.005
146-55	-201094.103	-47155.221	115641.72753767	2.993
146-54	-201095.348	-47152.498	119945.73843869	3.013
146-53	-201096.647	-47149.780	124854.17432281	2.996
146-52	-201097.996	-47147.104	128998.06877287	2.993
146-51	-201099.383	-47144.453	133450.94241616	2.998
146-50	-201100.826	-47141.824	137963.58901562	3.001
146-49	-201102.310	-47139.215	142308.94619168	3.001
146-48	-201103.845	-47136.637	146415.04308264	3.000
146-47	-201105.416	-47134.080	151020.43465456	2.998
146-46	-201107.049	-47131.567	155635.57278453	3.000
146-45	-201108.718	-47129.073	159559.48741318	3.008
146-44	-201110.435	-47126.603	163670.14169635	2.999
146-43	-201112.191	-47124.173	167447.15348546	3.002
146-42	-201113.988	-47121.769	171703.51524909	3.004
146-41	-201115.835	-47119.399	175572.44457922	2.996
146-40	-201117.714	-47117.066	179434.70573163	3.007
146-39	-201119.643	-47114.759	183214.68721421	2.994
146-38	-201121.603	-47112.496	148071.80795409	1.771
146-525	-201122.786	-47111.177	94335.82762050	1.229
146-37	-201123.605	-47110.261	129845.42712443	2.842
146-524	-201125.542	-47108.182	95681.84779166	0.142
146-36	-201125.637	-47108.076	103294.94865799	3.017
146-35	-201127.735	-47105.909	198637.88233768	3.000
146-34	-201129.853	-47103.784	201398.88562515	2.999
146-33	-201132.011	-47101.702	204840.48778727	2.995
146-32	-201134.202	-47099.660	208522.61162978	3.006
146-31	-201136.438	-47097.650	211944.20858191	2.999
146-30	-201138.702	-47095.685	214840.18569757	2.997
146-29	-201141.000	-47093.760	218291.56151267	3.001
146-28	-201143.338	-47091.879	221427.96796905	2.998
146-27	-201145.702	-47090.036	224504.55664820	3.005
146-26	-201148.105	-47088.232	227264.89642623	2.992
146-6	-201150.528	-4		

地番	146街区			
測点	X _n	Y _n	(X _{n+1} - X _{n-1}) Y _n	距離
146-673	-201075.210	-47000.185	-73320.28860000	1.000
146-672	-201074.224	-47000.354	-92637.69773400	0.998
146-671	-201073.239	-47000.512	-92873.01171200	0.998
146-670	-201072.248	-47000.634	-92920.25341800	0.990
146-669	-201071.262	-47000.722	-93672.43894600	1.011
146-668	-201070.255	-47000.810	-93625.61352000	0.986
146-667	-201069.270	-47000.844	-93813.68462400	1.012
146-666	-201068.259	-47000.881	-94753.77609600	1.005
146-665	-201067.254	-47000.888	-94001.77600000	0.996
146-664	-201066.259	-47000.855	-94925.71171000	1.008
146-663	-201065.252	-47000.814	-94330.63369800	1.003
146-662	-201064.252	-47000.743	-93766.48228500	1.000
146-661	-201063.257	-47000.644	-93155.27640800	0.996
146-660	-201062.270	-47000.511	-92309.00360400	0.989
146-659	-201061.293	-47000.357	-92919.70578900	1.014
146-658	-201060.293	-47000.189	-92825.37327500	0.995
146-657	-201059.318	-46999.992	-91790.98437600	1.004
146-656	-201058.340	-46999.767	-91367.54704800	0.998
146-655	-201057.374	-46999.516	-90803.06491200	1.004
146-549	-201056.408	-46999.243	-66785.92430300	0.473
146-654	-201055.953	-46999.115	-111998.89104500	1.995
146-653	-201054.025	-46998.601	-181884.58587000	2.000
146-652	-201052.083	-46998.121	-182822.69069000	1.995
146-651	-201050.135	-46997.692	-184418.94340800	2.008
146-650	-201048.159	-46997.334	-185028.50395800	1.988
146-649	-201046.198	-46997.007	-185732.17166400	2.008
146-648	-201044.207	-46996.748	-187094.05378800	2.000
146-647	-201042.217	-46996.553	-186858.29472800	1.993
146-646	-201040.231	-46996.392	-187233.62572800	2.000
146-645	-201038.233	-46996.302	-187938.21169800	2.002
146-644	-201036.232	-46996.251	-188360.97400800	2.007
146-643	-201034.225	-46996.262	-188314.02183400	2.001
146-642	-201032.225	-46996.333	-187703.35400200	1.997
146-548	-201030.231	-46996.443	-121767.78381300	0.599
146-641	-201029.634	-46996.487	-74959.39676500	1.003
146-640	-201028.636	-46996.590	-93194.23797000	0.994
146-639	-201027.651	-46996.720	-92724.52856000	0.999
146-638	-201026.663	-46996.869	-92818.81627500	1.004
146-637	-201025.676	-46997.055	-92913.17773500	1.012
146-636	-201024.686	-46997.263	-92349.62179500	1.001
146-635	-201023.711	-46997.489	-90893.14372600	0.994
146-634	-201022.752	-46997.752	-90376.67709600	1.003
146-633	-201021.788	-46998.028	-89907.22756400	0.997
146-632	-201020.839	-46998.335	-88779.85481500	0.996
146-631	-201019.899	-46998.665	-88451.48753000	1.007
146-630	-201018.957	-46999.021	-87512.17710200	0.997
146-629	-201018.037	-46999.406	-86290.90941600	0.998
146-628	-201017.121	-46999.801	-85868.63642700	1.001
146-627	-201016.210	-47000.217	-84976.39233600	1.004
146-626	-201015.313	-47000.668	-83520.18703600	0.998
146-625	-201014.433	-47001.138	-82063.98694800	0.999
146-624	-201013.567	-47001.637	-80983.82055100	1.000
146-623	-201012.710	-47002.153	-79903.66010000	1.000
146-622	-201011.867	-47002.690	-78306.48154000	0.998
146-621	-201011.044	-47003.254	-76991.33005200	1.003
146-620	-201010.229	-47003.838	-75817.19069400	0.999
146-619	-201009.431	-47004.439	-74314.01805900	0.998
146-618	-201008.648	-47005.057	-73045.85857800	1.005
146-617	-201007.877	-47005.702	-71589.68414600	1.000
146-616	-201007.125	-47006.361	-69428.39519700	0.997

地番	146街区			
測点	X _n	Y _n	(X _{n+1} - X _{n-1}) Y _n	距離
146-615	-201006.400	-47007.045	-67737.15184500	1.003
146-614	-201005.684	-47007.747	-66186.90777600	1.002
146-613	-201004.992	-47008.471	-64401.60527000	0.997
146-612	-201004.314	-47009.202	-66047.92881000	1.107
146-611	-201003.587	-47010.037	-65343.95143000	1.001
146-610	-201002.924	-47010.787	-62383.31434900	1.002
146-609	-201002.260	-47011.538	-64029.71475600	1.002
146-608	-201001.562	-47012.257	-65817.15980000	1.001
146-607	-201000.860	-47012.970	-67087.50819000	0.995
146-606	-94905.135	-47013.652	-68122.78174800	0.993
146-605	-200999.411	-47014.331	-69487.18121800	0.998
146-604	-200998.657	-47014.985	-71368.74723000	0.995
146-603	-200997.893	-47015.622	-72498.08912400	0.998
146-602	-200997.115	-47016.247	-74003.57277800	1.001
146-601	-200996.319	-47016.854	-75791.16864800	1.010
146-600	-200995.503	-47017.450	-76779.49585000	0.993
146-599	-200994.686	-47018.015	-77579.72475000	0.996
146-598	-200993.853	-47018.561	-78850.12679700	0.997
146-597	-200993.009	-47019.091	-80402.64561000	1.005
146-596	-200992.143	-47019.601	-81626.02733600	0.999
146-595	-200991.273	-47020.092	-82473.24136800	1.006
146-594	-200990.389	-47020.573	-83555.55822100	0.996
146-593	-200989.496	-47021.014	-84402.72013000	0.998
146-592	-200988.594	-47021.440	-85155.82784000	0.998
146-591	-200987.685	-47021.853	-86238.07840200	1.006
146-590	-200986.760	-47022.248	-86991.15880000	0.994
146-589	-200985.835	-47022.612	-87509.08093200	1.001
146-588	-200984.899	-47022.966	-88732.33684200	1.004
146-587	-200983.948	-47023.289	-89250.20252200	0.993
146-586	-200983.001	-47023.587	-89673.98040900	1.001
146-585	-200982.041	-47023.869	-90379.87621800	0.997
146-584	-200981.079	-47024.132	-91085.74368400	1.003
146-583	-200980.104	-47024.367	-91462.39381500	0.995
146-582	-200979.134	-47024.589	-91744.97313900	1.000
146-581	-200978.153	-47024.784	-92403.70056000	0.999
146-580	-200977.169	-47024.959	-92921.31898400	1.002
146-579	-200976.177	-47025.100	-93344.82350000	1.002
146-578	-200975.184	-47025.231	-93674.26015200	1.004
146-577	-200974.185	-47025.333	-93909.59000100	1.002
146-576	-200973.187	-47025.422	-94003.81857800	1.003
146-575	-200972.186	-47025.479	-93956.90704200	0.998
146-574	-200971.189	-47025.516	-94004.00648400	1.002
146-573	-200970.187	-47025.528	-94380.23469600	1.005
146-572	-200969.182	-47025.518	-93721.85737400	0.988
146-571	-200968.194	-47025.487	-93721.79559100	1.006
146-570	-200967.189	-47025.436	-94380.05005200	1.005
146-569	-200966.187	-47025.355	-93627.48180500	0.994
146-568	-200965.198	-47025.251	-93298.09798400	1.002
146-567	-200964.203	-47025.129	-92639.50413000	0.985
146-566	-200963.228	-47024.991	-92639.23227000	1.010
146-565	-200962.233	-47024.820	-93062.11878000	1.002
146-564	-200961.249	-47024.632	-92262.32798400	1.001
146-563	-200960.271	-47024.420	-91650.59458000	0.998
146-562	-200959.300	-47024.191	-91273.95473100	1.004
146-561	-200958.330	-47023.932	-90803.21269200	1.001
146-560	-200957.369	-47023.651	-90332.43357100	1.008
146-559	-200956.409	-47023.345	-89250.30881000	0.991
146-546	-200955.471	-47023.025	-47493.25525000	0.078
146-558	-200955.399	-47022.996	-136366.68840000	3.002
146-557	-200952.571	-47021.989	-264780.82005900	2.996

地番	146街区			
測点	X _n	Y _n	(X _{n+1} - X _{n-1}) Y _n	距離
146-556	-200949.768	-47020.931	-262988.06708300	3.001
146-555	-200946.978	-47019.826	-261336.19290800	2.996
146-554	-200944.210	-47018.679	-260013.29487000	3.005
146-545	-200941.448	-47017.494	-941666.36983200	20.385
146-674	-200924.182	-47006.657	-976986.35908800	4.064
146-325	-200920.664	-47004.623	-310136.50255400	3.597
146-324	-200917.584	-47002.766	-288220.96111200	3.595
146-323	-200914.532	-47000.867	-285577.26789200	3.612
R4-36	-200911.508	-46998.892	-2636637.84120000	63.711
R4-34	-200858.432	-46963.650	-2515983.62145000	0.588
146-322	-200857.935	-46963.335	-47104.22500500	0.592
146-321	-200857.429	-46963.028	-47761.39947600	0.598
146-320	-200856.918	-46962.717	-47948.93405700	0.594
146-319	-200856.408	-46962.413	-48793.94710700	0.599
146-318	-200855.879	-46962.133	-50014.67164500	0.597
146-317	-200855.343	-46961.870	-514005.81308696	1.933
14601	-200853.451	-46961.472	-491148.61101448	8.799
14602	-200844.884	-46959.464	-726458.40588196	6.913
14603	-200837.981	-46959.840	-674679.30330271	7.887
14604	-200830.517	-46962.388	-653491.45416198	7.889
14605	-200824.066	-46966.929	-645013.37543359	11.483
14606	-200816.784	-46975.808	-672204.29952019	8.131
14607	-200809.757	-46979.899	-473281.66253835	3.091
14608	-200806.710	-46979.377	-189618.02058019	0.990
14609	-200805.720	-46979.415	-63271.21433221	0.729
14610	-200805.363	-46980.051	-188108.82293730	3.649
14611	-200801.716	-46979.930	-325662.12568744	3.379
14612	-200798.431	-46979.139	-520532.17782777	9.900
14613	-200790.636	-46973.036	-532533.61269932	7.841
14614	-200787.094	-46966.041	-297924.11968423	17.593
F208	-200784.293	-46948.673	-291367.40884296	9.354
F183	-200780.888	-46957.385	-574100.98901000	8.827
F182	-200772.067	-46957.063	-621946.29943500	12.865
F181	-200767.643	-46944.983	-1324458.16927448	25.186
		倍面積	207938.66713912	
		面積	103969.33356956	
		地積	103969.33	m ²

使用機種；アイサンテクノロジー株式会社 Wingneo 測量計算システム
 計算式；面積= {Y_{i</}

座標求積表（世界測地系）

地 番：147街区

測点名	X _n	Y _n	(X _{n+1} -X _{n-1})Y _n	距 離
KR-72	-200929.298	-47435.606	-41941.06792690	2.794
KR-73	-200930.783	-47437.974	397267.22124616	7.658
KR-74	-200937.673	-47441.316	438889.15150081	5.348
KR-75	-200940.034	-47446.114	258920.55185350	4.064
KR-76	-200943.130	-47448.746	316821.50078080	4.136
KR-77	-200946.711	-47450.815	482914.40989349	6.767
KR-78	-200953.307	-47452.324	631360.72333486	6.751
KR-79	-200960.016	-47451.573	511153.43471779	4.088
KR-80	-200964.079	-47451.119	1054659.99939268	18.167
KR-81	-200982.242	-47450.765	1331621.49784617	12.321
KR-82	-200992.142	-47443.430	1020804.35885132	13.745
KR-83	-201003.759	-47450.777	1116538.02100101	14.344
KR-84	-201015.673	-47458.764	938684.85008698	8.194
KR-85	-201023.537	-47461.064	1294356.90128276	24.870
KR-86	-201042.945	-47476.616	1569345.20472368	19.965
KR-87	-201056.593	-47491.188	900338.31895350	8.290
KR-88	-201061.903	-47497.554	485532.04073669	7.209
KR-89	-201066.815	-47502.830	691092.22961888	20.621
KR-90	-201076.451	-47521.061	710703.08617284	14.000
KR-91	-201081.770	-47534.011	405867.64850583	18.650
KR-92	-201084.990	-47552.381	287851.90203185	7.164
KR-93	-201087.824	-47558.961	207413.54648191	5.287
KR-94	-201089.351	-47564.024	210768.51681228	12.886
KR-95	-201092.255	-47576.578	346610.51549487	8.545
KR-96	-201096.636	-47583.914	742473.01885068	19.043
KR-97	-201107.858	-47599.299	704966.49494626	8.300
KR-98	-201111.447	-47606.783	313787.62969478	6.965
KR-99	-201114.450	-47613.067	468294.78591051	21.011
KR-101	-201121.282	-47632.936	3375275.45611986	68.107
83-1	-201185.310	-47609.721	3447533.19434753	20.002
83-2	-201193.694	-47591.561	288534.22939820	7.205
83-3	-201191.373	-47584.741	-214640.17927603	7.200
83-4	-201189.184	-47577.881	-202064.57156787	7.214
83-5	-201187.125	-47570.967	-188882.43934019	7.194
83-6	-201185.213	-47564.032	-174997.64247398	7.187
83-7	-201183.446	-47557.065	-161685.84238091	7.203
83-8	-201181.813	-47550.050	-114480.45300669	3.679
147-103	-201181.039	-47546.454	-104633.05642939	7.202
147-102	-201179.613	-47539.394	-128588.84163204	7.203
147-101	-201178.334	-47532.305	-114839.11245238	7.195
147-100	-201177.197	-47525.200	-101325.48080909	7.199
147-99	-201176.202	-47518.070	-88077.08980864	7.211
147-98	-201175.343	-47510.910	-74398.90055100	7.189
147-97	-201174.636	-47503.756	-60514.71490861	7.193
147-96	-201174.069	-47496.586	-47067.33105201	7.201
合 計		倍面積 面 積	105431.68433290 52715.84216645	1183.600

地 番：147街区

測点名	Xn	Yn	(Xn+1-Xn-1)Yn	距 離
147-95	-201173.645	-47489.397	-33551.84741341	7.200
147-94	-201173.363	-47482.203	-20104.29787311	7.209
147-93	-201173.221	-47474.995	-6453.20482707	7.197
147-92	-201173.227	-47467.798	7240.35906751	7.201
147-91	-201173.374	-47460.598	20791.01926488	7.194
147-90	-201173.665	-47453.410	34631.26358736	7.199
147-89	-201174.104	-47446.225	48317.99339543	7.205
147-88	-201174.683	-47439.042	61786.04146247	7.194
147-87	-201175.406	-47431.885	75288.74599972	7.204
147-86	-201176.271	-47424.733	88772.67007665	7.204
147-85	-201177.278	-47417.600	102448.67826928	7.196
147-84	-201178.431	-47410.497	115772.27893832	7.203
147-83	-201179.720	-47403.411	128744.88133489	7.186
147-82	-201181.147	-47396.367	141668.75957063	7.214
147-81	-201182.709	-47389.325	155890.59991690	7.195
147-80	-201184.437	-47382.340	169332.26789538	7.201
147-79	-201186.283	-47375.380	181816.89261242	7.197
147-78	-201188.274	-47368.464	194783.51721542	7.201
147-77	-201190.395	-47361.583	207813.66299097	7.201
147-76	-201192.662	-47354.748	221047.73354446	7.200
147-75	-201195.063	-47347.960	233832.87459167	7.199
147-74	-201197.601	-47341.223	246268.57324854	7.202
147-73	-201200.265	-47334.532	258764.98734009	7.201
147-72	-201203.068	-47327.899	271293.29042995	7.198
147-71	-201205.997	-47321.324	283843.56873233	7.206
147-70	-201209.066	-47314.804	296198.07557050	7.200
147-69	-201212.257	-47308.349	308295.83101390	7.212
159-2	-201215.582	-47301.949	319829.29309576	7.177
159-104	-201219.019	-47295.649	322954.22108833	3.007
159-131	-201220.508	-47293.037	-5612352.93613304	157.362
159-132	-201100.347	-47191.429	-7602883.57202941	135.462
147-1	-201059.401	-47320.555	-1981389.77437287	2.999
147-4	-201058.475	-47323.407	-90316.83041056	3.003
147-5	-201057.492	-47326.244	-95413.35456335	2.997
147-6	-201056.459	-47329.057	-99948.49400910	2.997
147-7	-201055.380	-47331.854	-104743.02390014	3.004
147-8	-201054.246	-47334.636	-109366.22138738	3.002
147-9	-201053.070	-47337.397	-114383.91325697	3.000
147-10	-201051.830	-47340.128	-119206.56925008	2.998
147-11	-201050.552	-47342.840	-122954.80208038	2.998
147-12	-201049.233	-47345.533	-127679.39244471	2.998
147-13	-201047.855	-47348.195	-132568.00896843	3.003
147-14	-201046.433	-47350.839	-137182.31197565	3.006
147-15	-201044.958	-47353.459	-141151.55942621	2.987
147-16	-201043.452	-47356.038	-144763.92786927	2.996
147-17	-201041.901	-47358.601	-150320.54797299	3.013
147-18	-201040.278	-47361.140	-154819.99877024	3.001
147-19	-201038.632	-47363.649	-158053.83490433	2.995
合 計		倍面積 面 積	105431.68433290 52715.84216645	1183.600

地 番：147街区

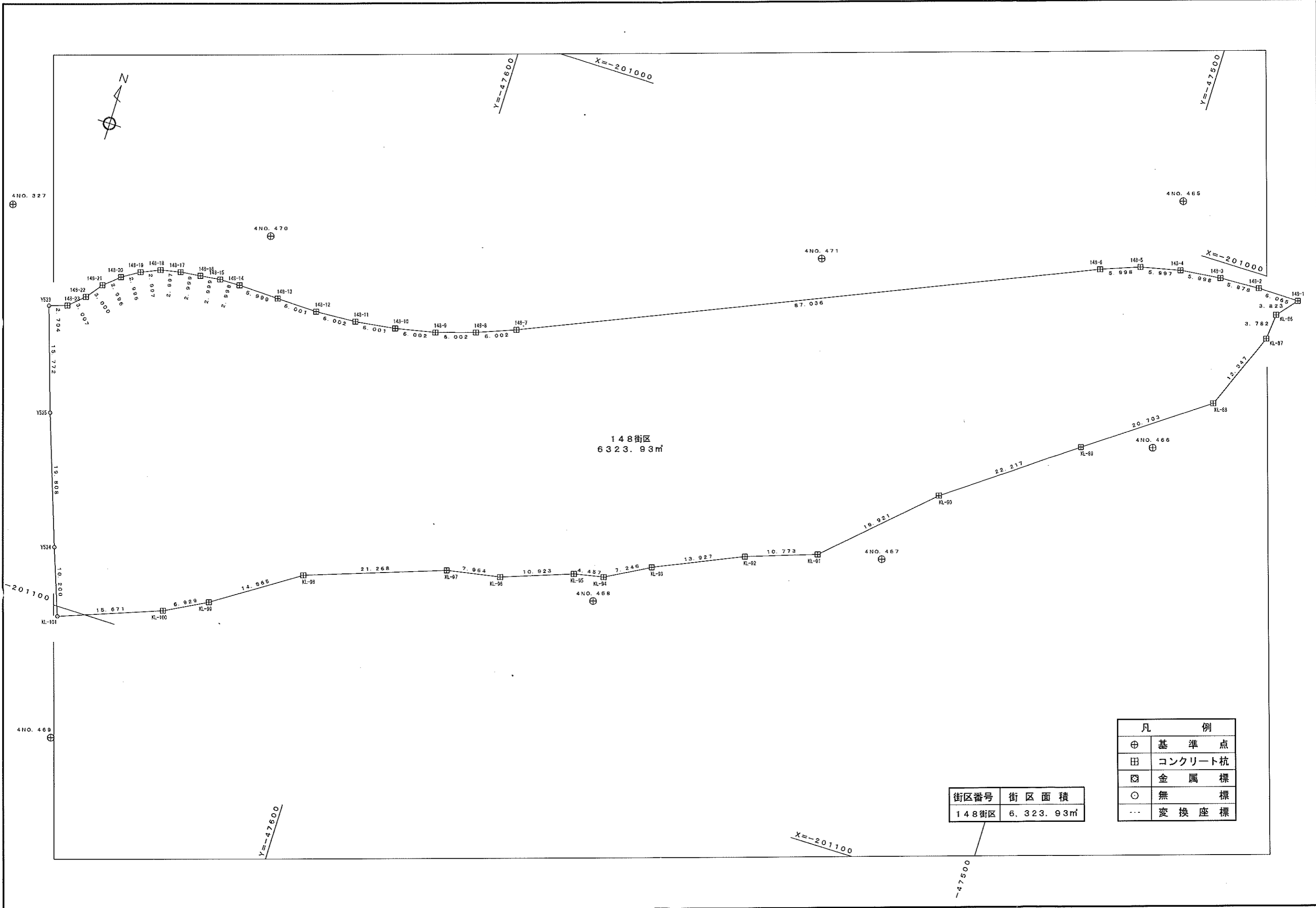
測点名	Xn	Yn	(Xn+1-Xn-1)Yn	距 離
147-20	-201036.941	-47366.121	-162349.32444798	3.001
147-21	-201035.205	-47368.569	-166327.94465404	2.998
147-22	-201033.429	-47370.985	-170586.00624937	3.000
147-23	-201031.603	-47373.366	-175459.76744440	3.007
147-24	-201029.726	-47375.714	-178873.67360830	2.994
147-25	-201027.828	-47378.029	-181767.11903448	3.000
147-26	-201025.889	-47380.319	-186034.33614126	3.001
147-27	-201023.901	-47382.567	-189976.14331507	2.995
147-28	-201021.880	-47384.777	-194267.11442171	3.004
147-29	-201019.802	-47386.946	-197876.07941016	2.993
147-30	-201017.704	-47389.081	-200124.01020129	2.989
147-31	-201015.579	-47391.183	-204766.78083041	3.011
147-32	-201013.383	-47393.243	-208871.31503814	3.001
147-33	-201011.171	-47395.272	-211799.83840394	3.008
147-34	-201008.914	-47397.260	-215244.13532410	2.996
147-35	-201006.630	-47399.198	-218319.41714786	3.000
147-36	-201004.308	-47401.098	-221634.98800337	3.003
147-37	-201001.954	-47402.963	-224531.04802896	2.996
147-38	-200999.572	-47404.779	-227781.93986090	3.002
147-39	-200997.149	-47406.551	-230872.24686940	2.998
147-40	-200994.702	-47408.283	-233523.52585370	3.001
147-41	-200992.224	-47409.976	-236490.97692244	3.000
147-42	-200989.714	-47411.620	-239227.70067261	2.997
147-43	-200987.178	-47413.217	-242130.86651960	3.007
147-44	-200984.607	-47414.776	-244690.94405142	2.998
147-45	-200982.017	-47416.287	-246947.33229721	2.996
147-46	-200979.399	-47417.743	-249964.02605616	3.007
147-47	-200976.746	-47419.158	-252541.29548861	3.007
147-48	-200974.073	-47420.535	-254325.45476168	2.999
147-49	-200971.382	-47421.861	-256109.47611637	2.990
147-50	-200968.672	-47423.125	-258367.69612828	3.000
147-51	-200965.934	-47424.352	-260578.69141313	2.998
147-52	-200963.178	-47425.529	-262584.88670173	3.000
147-53	-200960.398	-47426.657	-264545.28351568	2.999
147-54	-200957.600	-47427.737	-266308.38918534	2.999
147-55	-200954.782	-47428.765	-268187.63009915	3.001
147-56	-200951.945	-47429.743	-269934.01359393	3.001
147-57	-200949.091	-47430.670	-271441.13997425	3.000
147-58	-200946.222	-47431.548	-272959.86065963	3.002
147-59	-200943.336	-47432.375	-274223.90626385	2.997
147-60	-200940.441	-47433.147	-275604.45420174	3.002
147-61	-200937.526	-47433.865	-276785.47029580	2.996
147-62	-200934.606	-47434.535	-277935.74591475	3.003
147-63	-200931.667	-47435.150	-251759.69393256	2.412
合 計		倍面積 面 積	105431.68433290 52715.84216645	1183.600

街區別街区確定測量原図 (148街区)

縮尺 1 : 500

平成二十二年三月

三協コンサルタンツ株式会社



148街区
6,323.93m²

街区番号	街区面積
148街区	6,323.93m ²

凡 例	
⊕	基準点
⊞	コンクリート杭
⊠	金属標
○	無標
...	変換座標

独立行政法人都市再生機構 山形都市開発事務所

座標面積計算書

現場名：平成21年度 山形新都市街区点及び画地点測設測量業務（世界測地系）

地番No： 158 地番名： 148街区

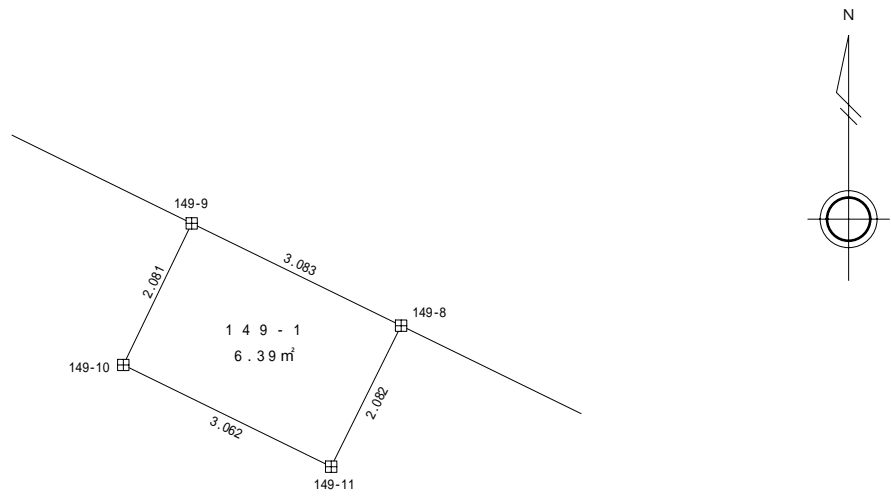
点名	Xn	Yn	距離	方向角	測角	Xn+1-Xn-1	Yn+1-Yn-1	Yn*(Xn+1-Xn-1)	Xn*(Yn+1-Yn-1)
148-1	-201002.096	-47478.604	6.065	270-29-26	50-35-41	2.985	-3.613	-141723.210901	726204.081347
148-2	-201002.044	-47484.669	5.878	267-26-05	176-56-39	-0.211	-11.937	10025.817546	2399331.166549
148-3	-201002.307	-47490.541	5.998	263-34-36	176-08-31	-0.934	-11.833	44361.372772	2378370.843745
148-4	-201002.978	-47496.502	5.997	257-17-37	173-43-01	-1.990	-11.811	94522.083471	2373969.443688
148-5	-201004.297	-47502.352	5.998	249-27-44	172-10-07	-3.423	-11.467	162610.836363	2304826.881773
148-6	-201006.401	-47507.968	87.036	246-46-19	177-18-35	-36.431	-85.598	1730739.568115	17205779.211349
148-7	-201040.728	-47587.950	6.002	248-48-47	182-02-28	-36.495	-85.578	1736742.593471	17204581.765823
148-8	-201042.897	-47593.546	6.002	252-38-20	183-49-33	-3.960	-11.325	188478.968648	2276823.864641
148-9	-201044.688	-47599.275	6.002	258-19-48	185-41-28	-3.005	-11.607	143043.995890	2333535.750782
148-10	-201045.902	-47605.153	6.001	262-10-28	183-50-40	-2.031	-11.823	96693.840642	2376972.694368
148-11	-201046.719	-47611.098	6.002	266-43-57	184-33-29	-1.159	-11.937	55188.634810	2399898.934186
148-12	-201047.061	-47617.090	6.001	271-15-00	184-31-03	-0.211	-11.992	10054.101250	2410957.616527
148-13	-201046.930	-47623.090	5.999	271-28-13	180-13-13	0.285	-11.997	-13565.948002	2411959.715912
148-14	-201046.776	-47629.087	2.998	269-00-20	177-32-07	0.102	-8.995	-4853.133324	1808415.875957
148-15	-201046.828	-47632.085	2.999	262-35-07	173-34-47	-0.439	-5.972	20914.099581	1200653.339846
148-16	-201047.215	-47635.059	2.999	263-13-13	180-38-06	-0.741	-5.952	35301.344131	1196635.659107
148-17	-201047.569	-47638.037	2.997	258-13-01	174-59-48	-0.966	-5.912	46022.207597	1188596.571674
148-18	-201048.181	-47640.971	2.997	246-29-49	168-16-48	-1.807	-5.682	86091.420329	1142361.751163
148-19	-201049.376	-47643.719	2.996	238-22-23	171-52-34	-2.766	-5.299	131787.011310	1065369.638021
148-20	-201050.947	-47646.270	2.996	228-59-31	170-37-08	-3.537	-4.812	168529.480553	967468.560902
148-21	-201052.913	-47648.531	3.000	217-29-47	168-30-16	-4.346	-4.087	207085.164038	821717.176803
148-22	-201055.293	-47650.357	3.007	227-27-11	189-57-24	-4.413	-4.041	210285.684055	812478.569826
148-23	-201057.327	-47652.572	2.704	251-38-31	204-11-20	-2.885	-4.781	137455.824918	961253.723713
Y523	-201058.178	-47655.138	15.772	161-42-31	90-04-00	-15.826	2.384	754213.676186	-479330.577230
Y525	-201073.153	-47650.188	19.808	160-37-32	178-55-01	-33.661	11.521	1603952.978268	-2316563.795713
Y524	-201091.839	-47643.617	10.200	160-05-32	179-28-00	-28.276	10.044	1347170.914291	-2019766.430916
KL-101	-201101.429	-47640.144	15.671	69-24-47	89-19-15	-4.080	18.143	194353.735526	-3648655.959305
KL-100	-201095.919	-47625.474	6.929	62-00-24	172-35-37	8.762	20.788	-417317.653824	-4180465.257061
KL-99	-201092.667	-47619.356	14.565	56-40-06	174-39-42	11.255	18.287	-535972.234463	-3677418.030492
KL-98	-201084.663	-47607.186	21.268	70-37-04	193-56-58	15.062	32.232	-717038.146818	-6481410.010427
KL-97	-201077.605	-47587.123	7.964	79-42-24	189-05-20	8.481	27.899	-403606.713045	-5609892.257247
KL-96	-201076.182	-47579.287	10.923	70-09-15	170-26-51	5.131	18.110	-244142.310466	-3641506.749000
KL-95	-201072.474	-47569.013	4.457	78-33-30	188-24-15	4.592	14.642	-218447.644819	-2944118.381501
KL-94	-201071.590	-47564.645	7.246	61-10-14	162-36-44	4.378	10.716	-208246.419162	-2154697.505497
KL-93	-201068.096	-47558.297	13.927	66-08-11	184-57-57	9.128	19.084	-434127.812300	-3837213.294188
KL-92	-201062.461	-47545.561	10.773	71-02-04	184-53-53	9.135	22.924	-434346.544200	-4609185.834295
KL-91	-201058.960	-47535.373	19.921	46-56-11	155-54-07	17.103	24.742	-813020.623066	-4974656.002028
KL-90	-201045.358	-47520.819	22.217	53-51-29	186-55-18	26.706	32.496	-1269085.105232	-6533172.443466
KL-89	-201032.254	-47502.877	20.703	54-30-51	180-39-22	25.122	34.799	-1193352.865683	-6995802.421868
KL-88	-201020.236	-47486.019	12.347	22-07-11	147-36-20	23.456	21.507	-1113847.784367	-4323299.674160
KL-87	-201008.798	-47481.370	3.782	4-45-48	162-38-37	15.207	4.963	-722060.139581	-997654.895772
KL-86	-201005.029	-47481.056	3.823	39-53-45	215-07-57	6.702	2.766	-318223.187336	-556001.194708

倍面積	-12647.877172
面積	6323.9385860
地積	6323.93

地番 1 4 9 - 1

土地の所在 山形市大字松原

縮尺 S = 1 : 1 0 0



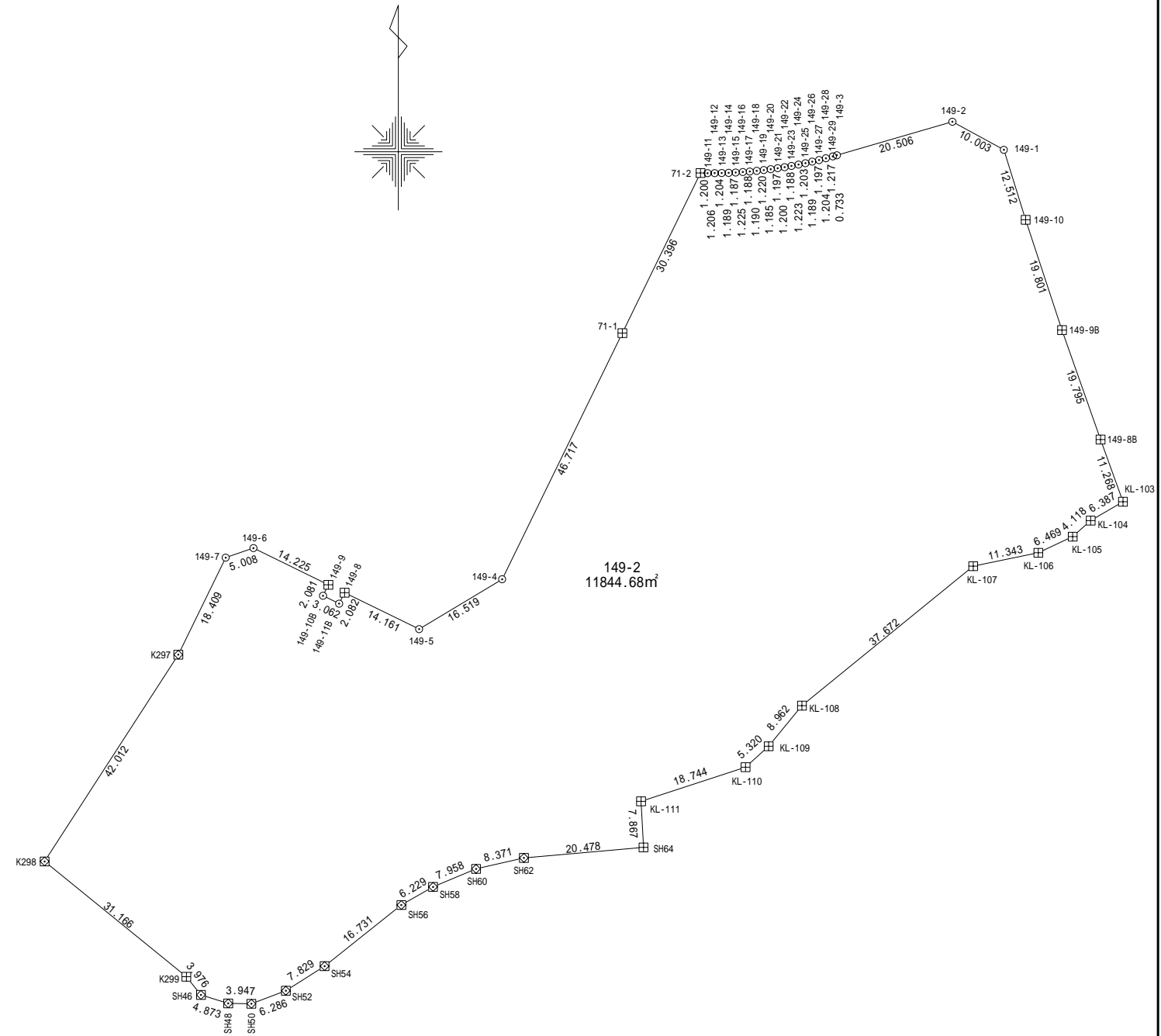
凡	例
田	コンクリート杭
⊠	金 属 標
○	無 標

地 番	1 4 9 - 1				
測 点	X	Y	$X_{n+1} - X_{n-1}$	$Y_n (X_{n+1} - X_{n-1})$	辺 長
149-8	-201125.462	-47793.254	3.220	-153894.277880	3.083
149-9	-201124.107	-47796.024	-0.518	24758.340432	2.081
149-10	-201125.980	-47796.930	-3.220	153906.114600	3.062
149-11	-201127.327	-47794.180	0.518	-24757.385240	2.082
			倍 面 積	12.791912	
			面 積	6.3959560	
			地 積	6.39	m ²

*使用機種名 Trimble GEO STATION システム

*公 式 $A = \{Y_i (X_{i+1} - X_{i-1})\} / 2 \quad i = 1, 2, 3 \dots, N$

地番	149-2			
測点	X _n	Y _n	(X _{n+1} - X _{n-1}) Y _n	距離
149-1	-201049.916	-47680.791	-797699.63343000	10.003
149-2	-201045.133	-47689.576	44637.44313600	20.506
149-3	-201050.852	-47709.268	282104.90168400	0.733
149-29	-201051.046	-47709.975	24666.05707500	1.217
149-28	-201051.369	-47711.148	29628.62290800	1.204
149-27	-201051.667	-47712.315	27386.86881000	1.197
149-26	-201051.943	-47713.480	25288.14440000	1.189
149-25	-201052.197	-47714.642	23952.75028400	1.203
149-24	-201052.445	-47715.819	22569.58238700	1.223
149-23	-201052.670	-47717.021	20709.18711400	1.188
149-22	-201052.879	-47718.190	18848.68505000	1.200
149-21	-201053.065	-47719.376	16654.06222400	1.197
149-20	-201053.228	-47720.562	14888.81534400	1.185
149-19	-201053.377	-47721.738	13409.80837800	1.220
149-18	-201053.509	-47722.951	11787.56889700	1.190
149-17	-201053.624	-47724.135	9497.10286500	1.188
149-16	-201053.708	-47725.320	8065.57908000	1.225
149-15	-201053.793	-47726.542	6729.44242200	1.187
149-14	-201053.849	-47727.728	4247.76779200	1.189
149-13	-201053.882	-47728.917	2386.44585000	1.204
149-12	-201053.899	-47730.121	1384.17350900	1.206
149-11	-201053.911	-47731.327	-906.89521300	1.200
71-2	-201053.880	-47732.527	1302176.74932890	30.396
71-1	-201081.192	-47745.869	3308373.34649796	46.717
149-4	-201123.171	-47766.367	2411403.83517110	16.519
149-5	-201131.675	-47780.530	109431.74694288	14.161
149-8	-201125.462	-47793.254	-207824.18699812	2.082
149-11B	-201127.327	-47794.180	24795.62042836	3.062
149-10B	-201125.980	-47796.930	-153882.21484720	2.081
149-9	-201124.107	-47796.024	-388447.84869096	14.225
149-6	-201117.853	-47808.801	-221024.86605386	5.008
149-7	-201119.484	-47813.535	868905.81248256	18.409
K297	-201136.026	-47821.613	2478115.98566000	42.012
K298	-201171.304	-47844.426	2628222.25617512	31.166
K299	-201190.959	-47820.239	1088411.08499230	3.976
SH46	-201194.064	-47817.755	217399.88731201	4.873
SH48	-201195.505	-47813.100	71847.67572226	3.947
SH50	-201195.567	-47809.153	-103673.61669352	6.286
SH52	-201193.337	-47803.277	-306568.69681637	7.829
SH54	-201189.154	-47796.659	-698192.26354180	16.731
SH56	-201178.729	-47783.573	-645720.65749882	6.229
SH58	-201175.641	-47778.164	-294496.05577439	7.958
SH60	-201172.565	-47770.824	-236382.67821293	8.371
SH62	-201170.692	-47762.665	-175146.86702516	20.478
SH64	-201168.898	-47742.265	-460695.60166350	7.867
KL-111	-201161.043	-47742.681	-653166.92492759	18.744
KL-110	-201155.217	-47724.865	-448186.92911795	5.320
KL-109	-201151.652	-47720.916	-501079.30363263	8.962
KL-108	-201144.717	-47715.240	-1465469.26160751	37.672
KL-107	-201120.939	-47686.020	-1243035.23219752	11.343
KL-106	-201118.650	-47674.910	-240036.31577415	6.469
KL-105	-201115.904	-47669.053	-261528.76411024	4.118
KL-104	-201113.164	-47665.979	-284467.77002055	6.387
KL-103	-201109.936	-47660.467	-658743.99595177	11.268
149-8B	-201099.342	-47664.305	-1394991.21443500	19.795
149-9B	-201080.669	-47670.876	-1786656.76160400	19.801
149-10	-201061.863	-47677.075	-1466213.08747500	12.512
	倍面積	23689.36660883		
	面積	11844.6830441		
	地積	11844.68 m ²		



使用機種；アイサンテクノロジー株式会社 Wingneo 測量計算システム
 計算式；面積= {Y_i (X_{i+1}-X_{i-1})} / 2 i=1,2,3, ..., N

凡例	
田	コンクリート杭
⊗	金属標
○	無標

座標求積表（世界測地系）

地 番：150街区

測点名	Xn	Yn	(Xn+1-Xn-1)Yn	距 離
SH124	-201319.346	-47941.841	906520.24945976	0.033
150-9	-201319.340	-47941.809	-50663.17449014	5.407
150-10	-201318.289	-47936.505	-105412.37449500	5.396
150-11	-201317.141	-47931.233	-114843.23426800	5.404
150-12	-201315.893	-47925.975	-124511.68305000	5.411
150-13	-201314.543	-47920.735	-133938.45432500	5.398
150-14	-201313.098	-47915.534	-142309.13598000	5.387
150-15	-201311.573	-47910.367	-151827.95302300	5.396
150-16	-201309.929	-47905.228	-156602.19033200	5.072
150-17	-201308.304	-47900.423	-175842.45283300	6.077
150-4	-201306.258	-47894.701	-4652587.04454200	273.059
150-5	-201211.162	-47638.736	-5395276.52419822	20.010
150-6	-201193.004	-47630.329	-3927215.88961195	68.390
KR-103	-201128.710	-47653.642	-2994411.03805989	5.726
KR-104	-201130.167	-47659.180	244866.14223456	14.004
KR-105	-201133.848	-47672.691	379543.88365346	11.399
KR-106	-201138.128	-47683.256	904027.19906492	24.065
KR-107	-201152.807	-47702.326	1232878.50508208	14.801
KR-108	-201163.974	-47712.041	820180.15938316	9.127
KR-109	-201169.997	-47718.898	541823.90196223	11.262
KR-110	-201175.328	-47728.818	327472.13458656	4.354
KR-111	-201176.858	-47732.895	321046.49152694	5.283
KR-112	-201182.054	-47733.851	809770.92070845	16.151
KR-113	-201193.822	-47744.912	1067967.64849390	16.851
KR-114	-201204.422	-47758.012	1204554.79870258	22.885
KR-115	-201219.045	-47775.616	1669021.11099767	30.871
Y66	-201239.357	-47798.863	1246752.05493383	33.287
K307	-201245.128	-47831.646	389478.29419528	20.088
K308	-201247.500	-47851.593	291809.74637411	6.245
K309	-201251.226	-47856.605	732559.14578510	14.699
K310	-201262.807	-47865.658	1124445.28521205	15.150
K311	-201274.718	-47875.020	1371498.95738046	21.537
K312	-201291.454	-47888.574	1184106.65885808	18.091
K313	-201299.444	-47904.806	452463.87413776	4.462
K314	-201300.900	-47909.024	91101.92692352	10.719
K315	-201301.346	-47919.733	50492.13356517	3.703
K316	-201301.953	-47923.386	54066.25267894	3.198
K317	-201302.474	-47926.541	-6087.56938481	10.726
K318	-201301.826	-47937.248	-97912.28807377	8.286
SH125	-201300.431	-47945.416	839983.45579931	19.249
合 計		倍面積 面 積	28989.92503319 14494.96251659	786.659