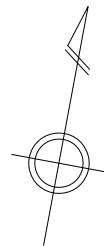


画地確定図

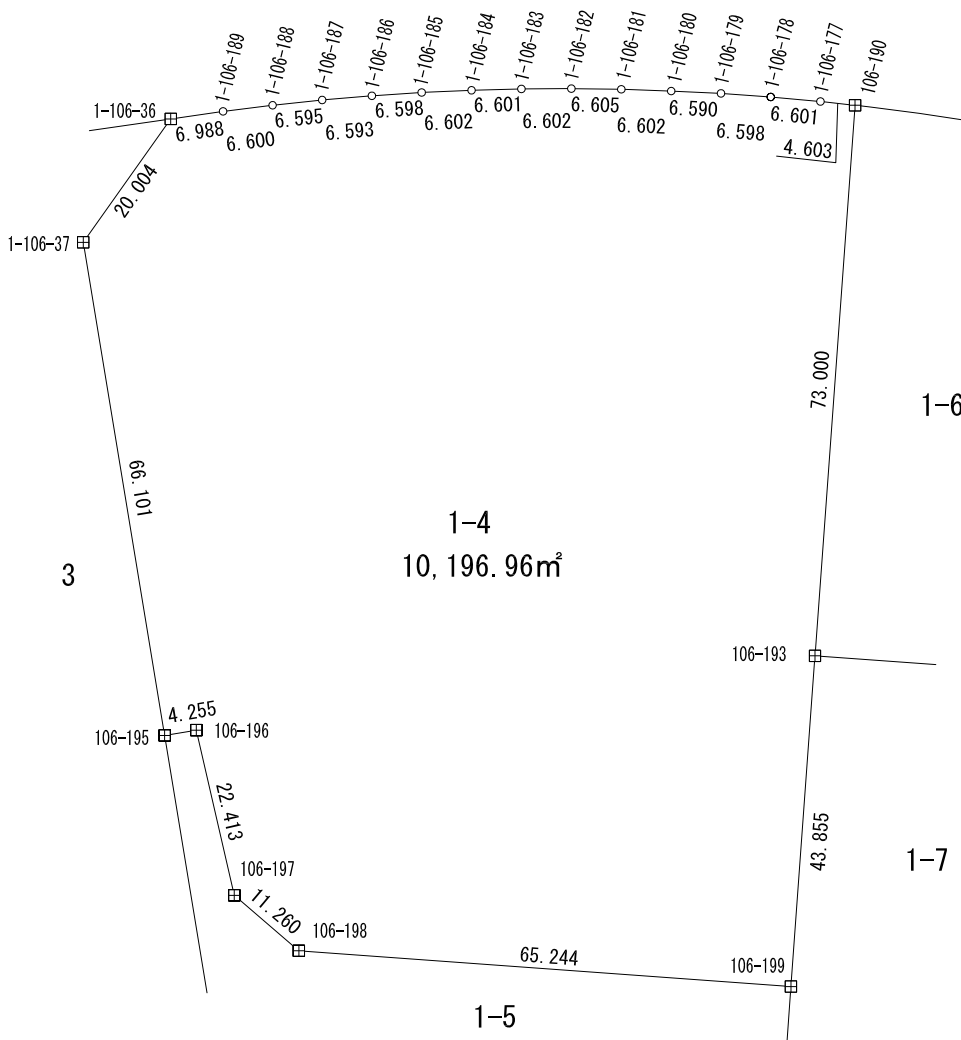
山形市

みはらしの丘五丁目

2



縮尺：1/1,000



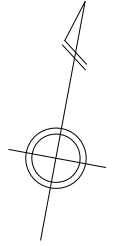
座標面積計算書

地番測点	1-4		距離	Y _n +1-Y _n -1	X _n (Y _n +1-Y _n -1)
	X	Y			
1-106-36	-201214.931	-47582.200	20.004	-14.998	3017821.535138
1-106-37	-201233.094	-47590.582	66.101	14.153	-2848051.979382
106-195	-201295.235	-47568.047	4.255	26.531	-5340563.879785
106-196	-201293.774	-47564.051	22.413	12.928	-2602325.910272
106-197	-201314.330	-47555.119	11.260	18.678	-3760149.055740
106-198	-201319.969	-47545.373	65.244	74.583	-15015047.247927
106-199	-201312.689	-47480.536	43.855	59.944	-12067487.829416
106-193	-201269.108	-47485.429	73.000	-13.039	2624347.899212
106-190	-201196.564	-47493.575	4.603	-12.736	2562439.439104
1-106-177	-201196.908	-47498.165	6.601	-11.162	2245759.887096
1-106-178	-201197.525	-47504.737	6.598	-13.128	2641321.108200
1-106-179	-201198.269	-47511.293	6.590	-13.084	2632478.151596
1-106-180	-201199.174	-47517.821	6.602	-13.057	2627057.614918
1-106-181	-201200.155	-47524.350	6.605	-13.039	2623448.821045
1-106-182	-201201.274	-47530.860	6.602	-12.992	2614006.951808
1-106-183	-201202.527	-47537.342	6.601	-12.936	2602755.889272
1-106-184	-201203.913	-47543.796	6.602	-12.884	2592311.215092
1-106-185	-201205.410	-47550.226	6.598	-12.822	2579855.767020
1-106-186	-201207.047	-47556.618	6.593	-12.749	2565188.642203
1-106-187	-201208.795	-47562.975	6.595	-12.676	2550522.685420
1-106-188	-201210.683	-47569.294	6.600	-12.609	2537065.501947
1-106-189	-201212.681	-47575.584	6.988	-12.906	2596850.860986
			倍面積		20393.932465
			面積		10196.9662325
			地積		10196.96m²

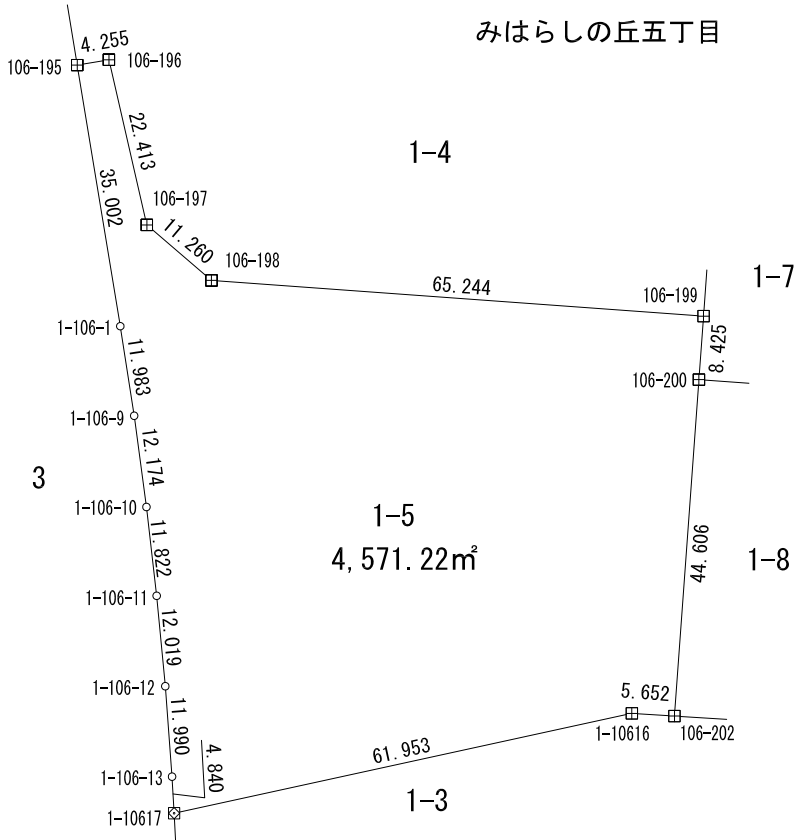
凡例	
田	コンクリート杭
⊠	金属標
○	無標

画地確定図

山形市
みはらしの丘五丁目



縮尺：1/1,000



座標面積計算書

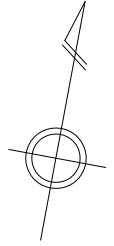
地番	1-5					
測点	X	Y	距離	$Y_n + 1 - Y_{n-1}$	$X_n(Y_n + 1 - Y_{n-1})$	
1-106-1	-201328.140	-47556.115	11.983	15.907	-3202526.722980	
1-106-9	-201339.445	-47552.140	12.174	7.785	-1567427.579325	
1-106-10	-201351.007	-47548.330	11.822	7.290	-1467848.841030	
1-106-11	-201362.305	-47544.850	12.019	6.795	-1368256.862475	
1-106-12	-201373.858	-47541.535	11.990	6.388	-1286376.204904	
1-106-13	-201385.447	-47538.462	4.840	4.223	-850450.742681	
1-10617	-201390.148	-47537.312	61.953	58.234	-11727753.878632	
1-10616	-201366.074	-47480.228	5.652	62.694	-12624444.643356	
106-202	-201365.388	-47474.618	44.606	0.633	-127464.290604	
106-200	-201321.061	-47479.595	8.425	-5.918	1191418.038998	
106-199	-201312.689	-47480.536	65.244	-65.778	13241946.057042	
106-198	-201319.969	-47545.373	11.260	-74.583	15015047.247927	
106-197	-201314.330	-47555.119	22.413	-18.678	3760149.055740	
106-196	-201293.774	-47564.051	4.255	-12.928	2602325.910272	
106-195	-201295.235	-47568.047	35.002	7.936	-1597478.984960	
			倍面積		9142.440968	
			面積		4571.220484	
			地積		4571.22m ²	

世界測地系 (測地成果2011)

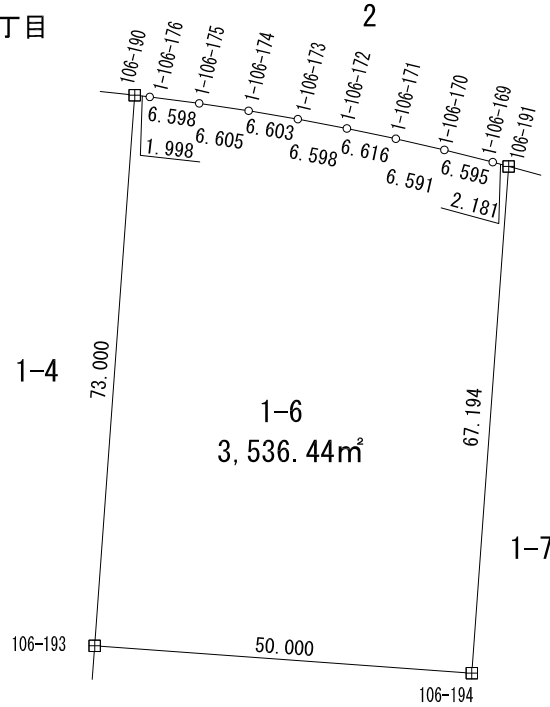
凡例	
田	コンクリート杭
☒	金属標
○	無標

画地確定図

山形市
みはらしの丘五丁目



縮尺：1/1,000



座標面積計算書

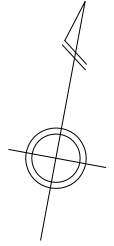
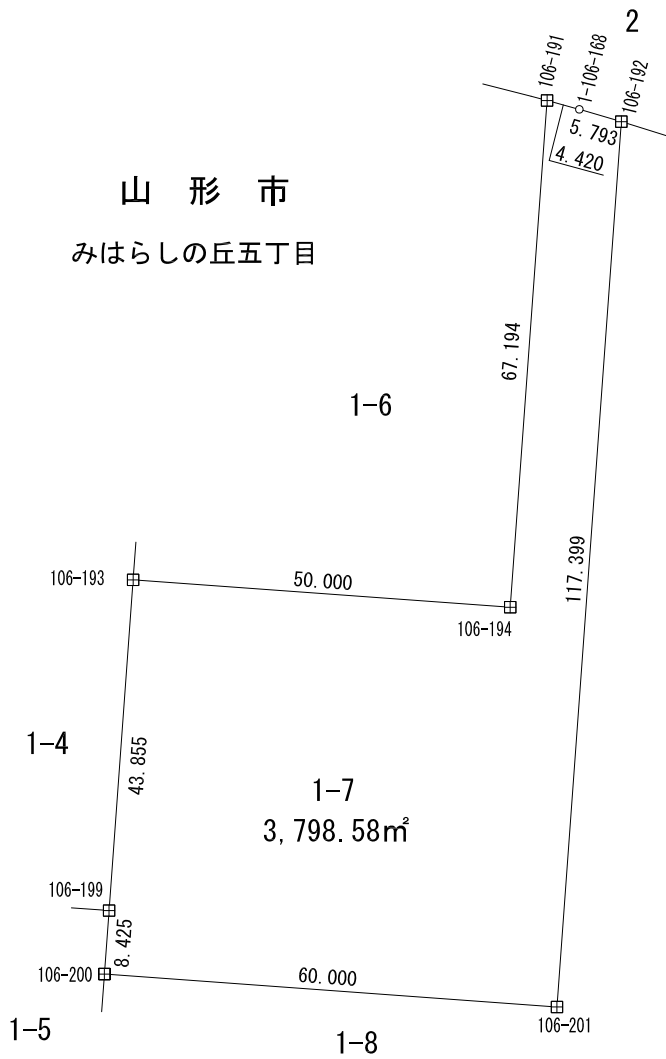
地番測点	1-6		距離	Y _{n+1} -Y _n -1	X _n (Y _{n+1} -Y _n -1)
	X	Y			
1-106-169	-201196.576	-47445.413	6.595	-8.756	1761677.219456
1-106-170	-201196.164	-47451.995	6.591	-13.167	2649149.891388
1-106-171	-201195.890	-47458.580	6.616	-13.199	2655584.552110
1-106-172	-201195.738	-47465.194	6.598	-13.212	2658198.090456
1-106-173	-201195.715	-47471.792	6.603	-13.200	2655783.438000
1-106-174	-201195.822	-47478.394	6.605	-13.203	2656388.437866
1-106-175	-201196.055	-47484.995	6.598	-13.189	2653574.769395
1-106-176	-201196.414	-47491.583	1.998	-8.580	1726265.232120
106-190	-201196.564	-47493.575	73.000	6.154	-1238163.654856
106-193	-201269.108	-47485.429	50.000	57.834	-11640197.592072
106-194	-201263.529	-47435.741	67.194	42.190	-8491308.288510
106-191	-201196.755	-47443.239	2.181	-9.672	1945975.014360
			倍面積		7072.890287
			面積		3536.4451435
			地積		3536.44m ²

世界測地系 (測地成果2011)

凡例	
田	コンクリート杭
⊠	金属標
○	無標

画地確定図

山形市
みはらしの丘五丁目



縮尺 : 1/1,000

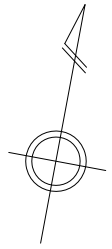
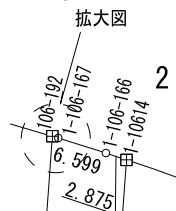
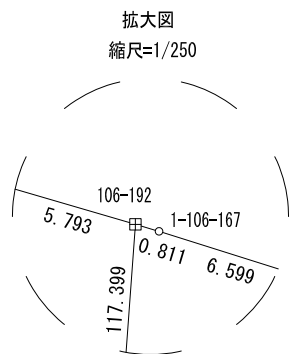
座標面積計算書

地番測点	1-7		距離	Y _{n+1} -Y _{n-1}	X _n (Y _{n+1} -Y _{n-1})
	X	Y			
106-193	-201269.108	-47485.429	43.855	-44.795	9015849.692860
106-199	-201312.689	-47480.536	8.425	5.834	-1174458.227626
106-200	-201321.061	-47479.595	60.000	60.566	-12193211.380526
106-201	-201314.366	-47419.970	117.399	46.525	-9366150.878150
106-192	-201197.700	-47433.070	5.793	-18.864	3795393.412800
1-106-168	-201197.118	-47438.834	4.420	-10.169	2045973.492942
106-191	-201196.755	-47443.239	67.194	3.093	-622301.563215
106-194	-201263.529	-47435.741	50.000	-42.190	8491308.288510
			倍面積		7597.162405
			面積		3798.5812025
			地積		3798.58m ²

世界測地系 (測地成果2011)

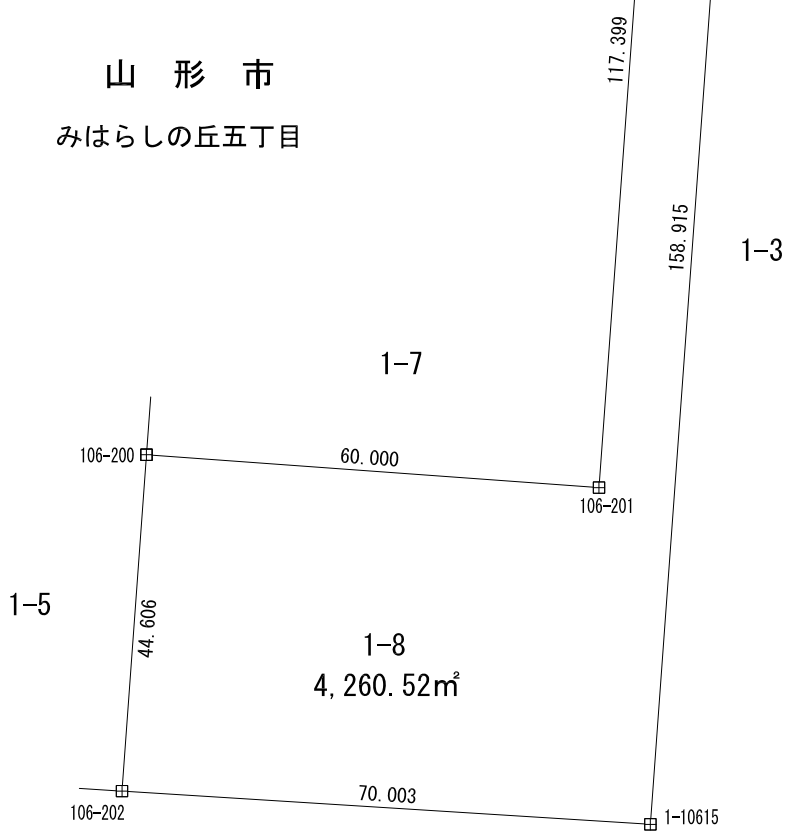
凡例	
田	コンクリート杭
⊠	金属標
○	無標

画地確定図



縮尺 : 1/1,000

山形市
みはらしの丘五丁目



座標面積計算書

地番	1-8					
測点	X	Y	距離	$Y_n + 1 - Y_{n-1}$	$X_n(Y_n + 1 - Y_{n-1})$	
106-192	-201197.700	-47433.070	117.399	12.293	-2473323.326100	
106-201	-201314.366	-47419.970	60.000	-46.525	9366150.878150	
106-200	-201321.061	-47479.595	44.606	-54.648	11001793.341528	
106-202	-201365.388	-47474.618	70.003	74.463	-14994270.886644	
1-10615	-201356.895	-47405.132	158.915	51.753	-10420823.386935	
1-10614	-201198.972	-47422.865	2.875	-20.580	4140674.843760	
1-106-166	-201198.574	-47425.712	6.599	-9.398	1890864.198452	
1-106-167	-201197.782	-47432.263	0.811	-7.358	1480413.279956	
				倍面積	8521.057833	
				面積	4260.5289165	
				地積	4260.52m ²	

世界測地系 (測地成果2011)

凡例	
田	コンクリート杭
⊠	金属標
○	無標

地番 1 - 2

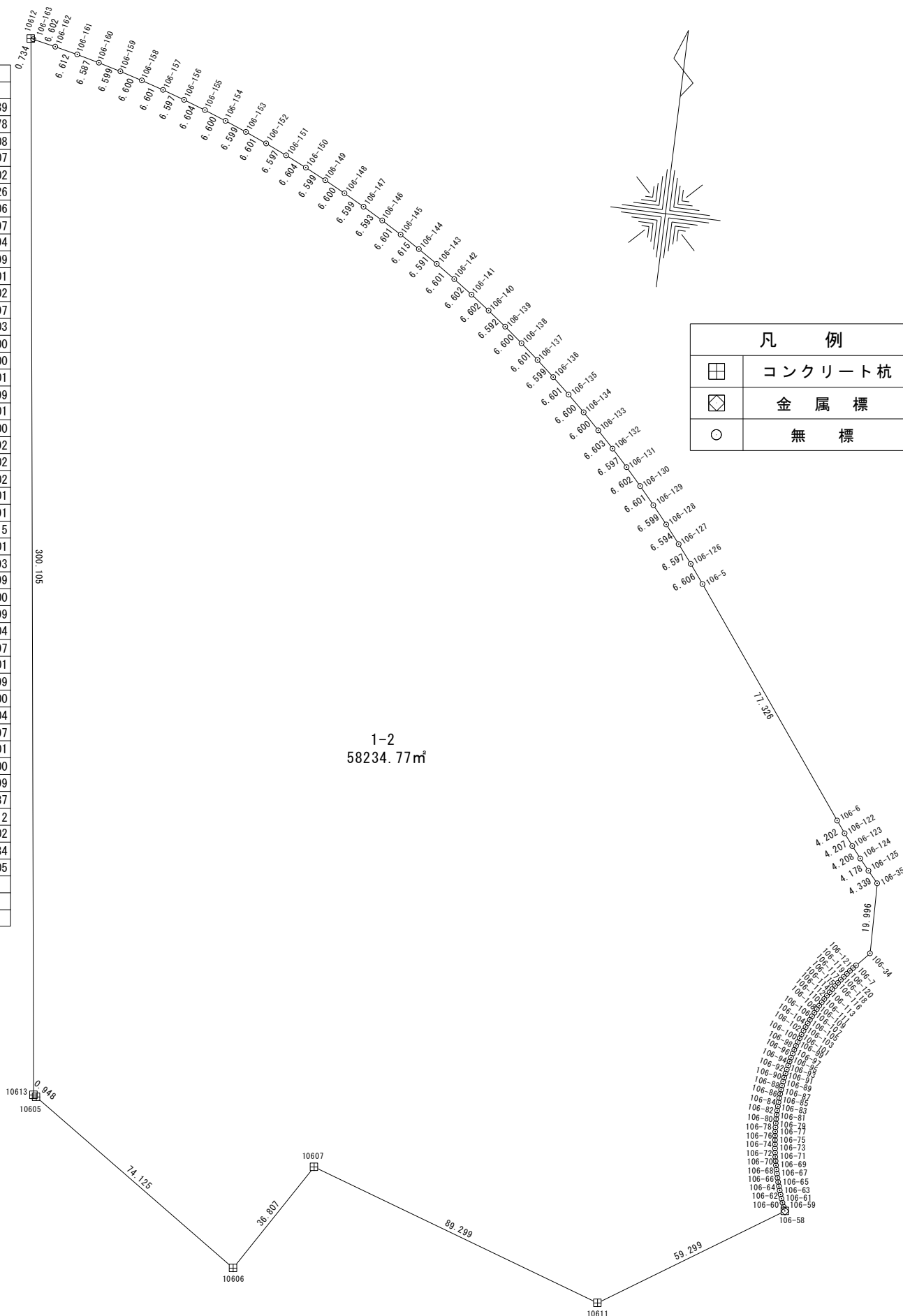
土地の所在 山形市みはらしの丘五丁目

縮尺 S = 1 : 1500

座標求積表 (世界測地系)

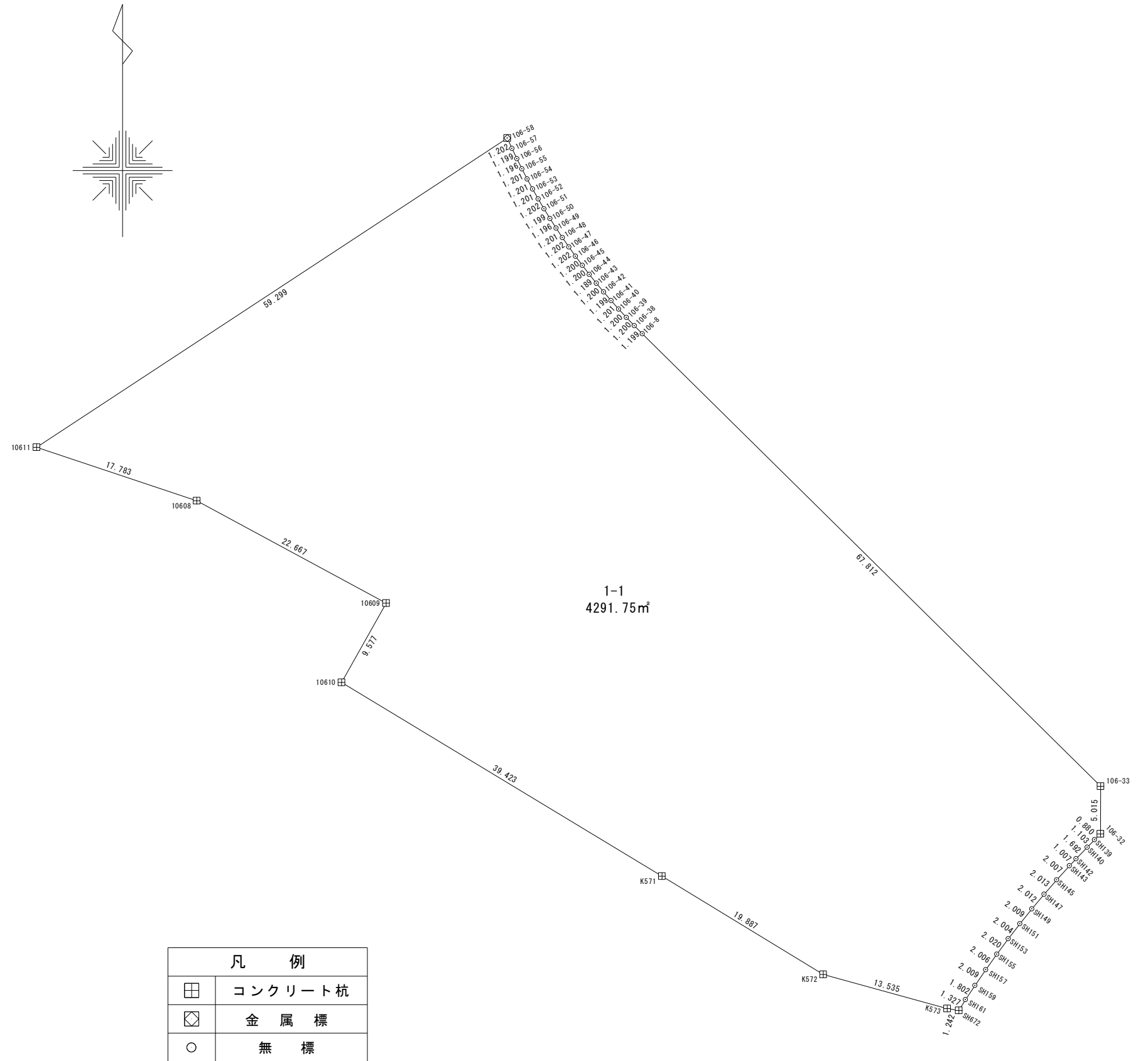
地番	1-2				
測点	X _n	Y _n	(X _{n+1} - X _{n-1})	Y _n	距離
10613	-201499.244	-47368.708	14122648.709244		0.948
10605	-201499.720	-47367.888	1977751.427664		74.125
10606	-201540.997	-47306.319	467954.107548		36.807
10607	-201509.612	-47287.091	-146117.111190		89.299
10611	-201537.907	-47202.393	-201412.610931		59.299
106-58	-201505.345	-47152.834	-1587305.850942		1.200
106-59	-201504.244	-47153.311	-104114.510688		1.201
106-60	-201503.137	-47153.778	-105247.232496		1.200
106-61	-201502.012	-47154.196	-106144.095196		1.199
106-62	-201500.886	-47154.608	-106616.568688		1.201
106-63	-201499.751	-47155.002	-107089.009542		1.197
106-64	-201498.615	-47155.378	-107844.349486		1.204
106-65	-201497.464	-47155.730	-108646.801920		1.200
106-66	-201496.311	-47156.061	-108977.656971		1.199
106-67	-201495.153	-47156.373	-109544.254479		1.202
106-68	-201493.988	-47156.670	-110016.511110		1.200
106-69	-201492.820	-47156.946	-110488.724478		1.200
106-70	-201491.645	-47157.192	-110677.929624		1.194
106-71	-201490.473	-47157.422	-111008.571388		1.200
106-72	-201489.291	-47157.630	-111716.425470		1.200
106-73	-201488.104	-47157.809	-112094.111993		1.201
106-74	-201486.914	-47157.974	-112330.294068		1.201
106-75	-201485.722	-47158.124	-112377.809492		1.197
106-76	-201484.531	-47158.240	-112613.877120		1.201
106-77	-201483.334	-47158.339	-112991.380244		1.202
106-78	-201482.135	-47158.425	-112991.586300		1.198
106-79	-201480.938	-47158.484	-113086.044632		1.202
106-80	-201479.737	-47158.528	-113321.942784		1.202
106-81	-201478.535	-47158.539	-113416.286295		1.203
106-82	-201477.332	-47158.538	-113274.808276		1.200
106-83	-201476.133	-47158.501	-113086.085398		1.200
106-84	-201474.934	-47158.449	-112944.485355		1.198
106-85	-201473.738	-47158.379	-112944.317705		1.202
106-86	-201472.539	-47158.290	-112849.787970		1.200
106-87	-201471.345	-47158.173	-112519.400778		1.200
106-88	-201470.153	-47158.037	-112283.286097		1.199
106-89	-201468.964	-47157.882	-112094.285514		1.201
106-90	-201467.776	-47157.708	-111433.664004		1.192
106-91	-201466.601	-47157.507	-111103.086492		1.201
106-92	-201465.420	-47157.286	-111102.565816		1.202
106-93	-201464.245	-47157.035	-110819.032250		1.202
106-94	-201463.070	-47156.782	-110441.183444		1.200
106-95	-201461.903	-47156.503	-109638.869475		1.198
106-96	-201460.745	-47156.196	-109072.281348		1.201
106-97	-201459.590	-47155.868	-108741.431608		1.199
106-98	-201458.439	-47155.531	-108174.788114		1.201
106-99	-201457.296	-47155.162	-107655.234846		1.203
106-100	-201456.156	-47154.777	-106899.879459		1.199
106-101	-201455.029	-47154.368	-106003.019264		1.201
106-102	-201453.908	-47153.937	-105483.357069		1.201
106-103	-201452.792	-47153.494	-104775.063668		1.199
106-104	-201451.686	-47153.030	-103783.819030		1.198
106-105	-201450.591	-47152.543	-102509.628482		1.192
106-106	-201449.512	-47152.036	-101989.853868		1.205
106-107	-201448.428	-47151.509	-101705.804913		1.200
106-108	-201447.355	-47150.971	-100761.625027		1.201
106-109	-201446.291	-47150.414	-99204.471056		1.200
106-110	-201445.251	-47149.816	-98260.216544		1.204
106-111	-201444.207	-47149.216	-97693.175552		1.199
106-112	-201443.179	-47148.599	-96371.736356		1.202
106-113	-201442.163	-47147.957	-95286.021097		1.199
106-114	-201441.158	-47147.303	-94200.311394		1.201
106-115	-201440.165	-47146.627	-93067.441698		1.201
106-116	-201439.184	-47145.935	-92170.302925		1.202
106-117	-201438.210	-47145.231	-90848.860137		1.199
106-118	-201437.257	-47144.503	-89150.255173		1.202
106-119	-201436.319	-47143.752	-88064.528736		1.199
106-120	-201435.389	-47142.996	-86931.684624		1.194
106-121	-201434.475	-47142.227	-83960.306287		1.155
106-7	-201433.608	-47141.464	-224299.085712		5.224
106-34	-201429.717	-47137.979	-1125749.214478		19.996

地番	1-2				
測点	X _n	Y _n	(X _{n+1} - X _{n-1})	Y _n	距離
106-35	-201409.726	-47138.437	-1094554.507140		4.339
106-125	-201406.497	-47141.336	-301091.713032		4.178
106-124	-201403.339	-47144.071	-301674.910329		4.208
106-123	-201400.098	-47146.755	-308104.043925		4.207
106-122	-201396.804	-47149.372	-312741.784476		4.202
106-6	-201393.465	-47151.923	-3076285.760366		77.326
106-5	-201331.562	-47198.262	-3169504.888086		6.606
106-126	-201326.312	-47202.272	-491375.651520		6.597
106-127	-201321.152	-47206.383	-483534.981069		6.594
106-128	-201316.069	-47210.584	-476071.529056		6.599
106-129	-201311.068	-47214.889	-468324.483991		6.601
106-130	-201306.150	-47219.292	-460388.097000		6.602
106-131	-201301.318	-47223.790	-451931.670300		6.597
106-132	-201296.580	-47228.381	-443474.497590		6.603
106-133	-201291.928	-47233.067	-435252.712405		6.600
106-134	-201287.365	-47237.836	-426463.183408		6.600
106-135	-201282.900	-47242.697	-417483.713389		6.601
106-136	-201278.528	-47247.643	-408361.378449		6.599
106-137	-201274.257	-47252.673	-399143.328831		6.601
106-138	-201270.081	-47257.785	-390113.015175		6.600
106-139	-201266.002	-47262.974	-380466.940700		6.592
106-140	-201262.031	-47268.236	-370582.970240		6.602
106-141	-201258.162	-47273.585	-360886.547890		6.602
106-142	-201254.397	-47279.008	-351188.471424		6.601
106-143	-201250.734	-47284.499	-340684.815295		6.591
106-144	-201247.192	-47290.057	-330699.368601		6.615
106-145	-201243.741	-47295.700	-320806.733100		6.601
106-146	-201240.409	-47301.398	-309540.348512		6.593
106-147	-201237.197	-47307.156	-298933.918764		6.599
106-148	-201234.090	-47312.978	-288751.104734		6.600
106-149	-201231.094	-47318.859	-277714.383471		6.599
106-150	-201228.221	-47324.800	-266911.872000		6.604
106-151	-201225.454	-47330.796	-256012.275564		6.597
106-152	-201222.812	-47336.841	-244542.120606		6.601
106-153	-201220.288	-47342.940	-233448.037140		6.599
106-154	-201217.881	-47349.084	-222398.647548		6.600
106-155	-201215.591	-47355.274	-211157.166766		6.604
106-156	-201213.422	-47361.512	-199534.050056		6.597
106-157	-201211.378	-47367.784	-187765.895776		6.601
106-158	-201209.458	-47374.100	-176279.026100		6.600
106-159	-201207.657	-47380.450	-164789.205100		6.599
106-160	-201205.980	-47386.832	-153296.401520		6.587
106-161	-201204.422	-47393.232	-140757.899040		6.612
106-162	-201203.010	-47399.691	-128690.161065		6.602
106-163	-201201.707	-47406.163	-67933.031579		0.734
10612	-201201.577	-47406.885	14105302.342245		300.105
		倍面積	116469.540007		
		面積	58234.770003		
		地積	58234.77	m ²	

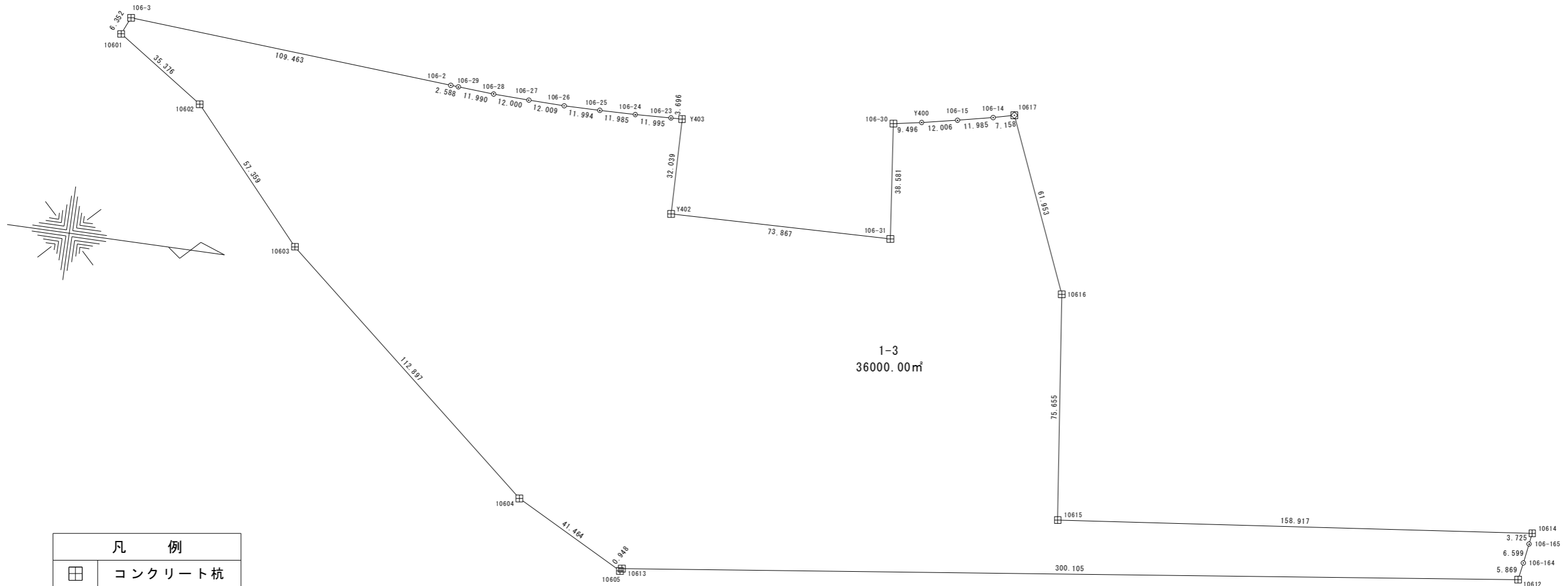


座標求積表 (世界測地系)

地番	1-1			
測点	X _n	Y _n	(X _{n+1} - X _{n-1}) Y _n	距離
106-58	-201505.345	-47152.834	1483805.380312	59.299
10611	-201537.907	-47202.393	1802989.805421	17.783
10608	-201543.542	-47185.526	774550.409290	22.667
10609	-201554.322	-47165.586	902136.163422	9.577
10610	-201562.669	-47170.281	1356239.919312	39.423
K571	-201583.074	-47136.549	1449684.564495	19.887
K572	-201593.424	-47119.568	657035.256192	13.535
K573	-201597.018	-47106.519	178486.600491	1.242
SH672	-201597.213	-47105.292	-43855.026852	1.327
SH161	-201596.087	-47104.590	-123649.548750	1.802
SH159	-201594.588	-47103.590	-148800.240810	2.009
SH157	-201592.928	-47102.459	-155108.397487	2.006
SH155	-201591.295	-47101.294	-153220.509382	2.020
SH153	-201589.675	-47100.088	-150955.782040	2.004
SH151	-201588.090	-47098.862	-148408.514162	2.009
SH149	-201586.524	-47097.604	-146332.255628	2.012
SH147	-201584.983	-47096.310	-143926.323360	2.013
SH145	-201583.468	-47094.985	-141473.334940	2.007
SH143	-201581.979	-47093.640	-104594.974440	1.007
SH142	-201581.247	-47092.949	-91784.157601	1.692
SH140	-201580.030	-47091.774	-94371.915096	1.103
SH139	-201579.243	-47091.001	-66351.220409	0.880
106-32	-201578.621	-47090.378	-265448.460786	5.015
106-33	-201573.606	-47090.360	-2479825.447960	67.812
106-8	-201525.960	-47138.613	-2286175.591887	1.199
106-38	-201525.107	-47139.455	-81079.862600	1.200
106-39	-201524.240	-47140.285	-82306.937610	1.200
106-40	-201523.361	-47141.102	-83675.456050	1.201
106-41	-201522.465	-47141.901	-85232.557008	1.199
106-42	-201521.553	-47142.680	-86365.389760	1.200
106-43	-201520.633	-47143.451	-87121.097448	1.189
106-44	-201519.705	-47144.195	-88583.942405	1.200
106-45	-201518.754	-47144.927	-90141.100424	1.200
106-46	-201517.793	-47145.645	-91415.405655	1.202
106-47	-201516.815	-47146.343	-92642.563995	1.202
106-48	-201515.828	-47147.029	-93728.293652	1.201
106-49	-201514.827	-47147.693	-94625.419851	1.196
106-50	-201513.821	-47148.339	-95663.979831	1.199
106-51	-201512.798	-47148.964	-97174.014804	1.202
106-52	-201511.760	-47149.571	-98118.257251	1.201
106-53	-201510.717	-47150.167	-99062.500867	1.201
106-54	-201509.659	-47150.735	-100195.311875	1.201
106-55	-201508.592	-47151.287	-100856.602893	1.196
106-56	-201507.520	-47151.818	-101517.864154	1.199
106-57	-201506.439	-47152.336	-102556.330800	1.202
	倍面積		8583.508412	
	面積		4291.754206	
	地積		4291.75	m ²



使用機種：アイサンテクノロジー株式会社 Wingneo 測量計算システム
 計算式：面積 = $\sum \{Y_i (X_{i+1} - X_{i-1})\} / 2$ $i=1, 2, 3, \dots, N$



凡 例	
⊠	コンクリート杭
◇	金属標
○	無 標

座標求積表 (世界測地系)

地 番	1-3			
測 点	X _n	Y _n	(X _{n+1} - X _{n-1}) Y _n	距 離
10617	-201390.148	-47537.312	1474940.179424	7.158
106-14	-201397.101	-47535.610	886491.590890	11.985
106-15	-201408.797	-47532.993	1115171.548773	12.006
Y400	-201420.562	-47530.598	1003228.331986	9.496
106-30	-201429.904	-47528.895	236931.541575	38.581
106-31	-201425.547	-47490.561	3299834.140524	73.867
Y402	-201499.388	-47488.591	3545308.249696	32.039
Y403	-201500.203	-47520.620	214032.872480	3.696
106-23	-201503.892	-47520.392	744787.103816	11.995
106-24	-201515.876	-47519.873	1138861.276318	11.985
106-25	-201527.858	-47519.587	1139329.617912	11.994
106-26	-201539.852	-47519.529	1140563.735058	12.009
106-27	-201551.860	-47519.716	1140473.184000	12.000
106-28	-201563.852	-47520.150	1138772.874600	11.990
106-29	-201575.824	-47520.808	691665.360440	2.588
106-2	-201578.407	-47520.973	5312227.008751	109.463
106-3	-201687.611	-47528.497	5310976.840271	6.352
10601	-201690.150	-47522.675	-1275888.778400	35.376

10602	-201660.763	-47502.980	-3211818.986740	57.359
10603	-201622.537	-47460.215	-5903054.081485	112.897
10604	-201536.384	-47387.254	-5819960.374518	41.464
10605	-201499.720	-47367.888	-1759243.360320	0.948
10613	-201499.244	-47368.708	-14122648.709244	300.105
10612	-201201.577	-47406.885	-14160863.211465	5.869
106-164	-201200.535	-47412.661	-99045.048829	6.599
106-165	-201199.488	-47419.176	-74211.010440	3.725
10614	-201198.970	-47422.865	7464690.911055	158.917
10615	-201356.895	-47405.132	7921587.177728	75.655
10616	-201366.074	-47480.228	1578860.021684	61.953
		倍 面 積	72000.005540	
		面 積	36000.002770	
		地 積	36000.00	㎡