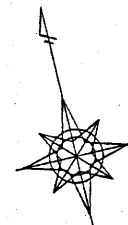
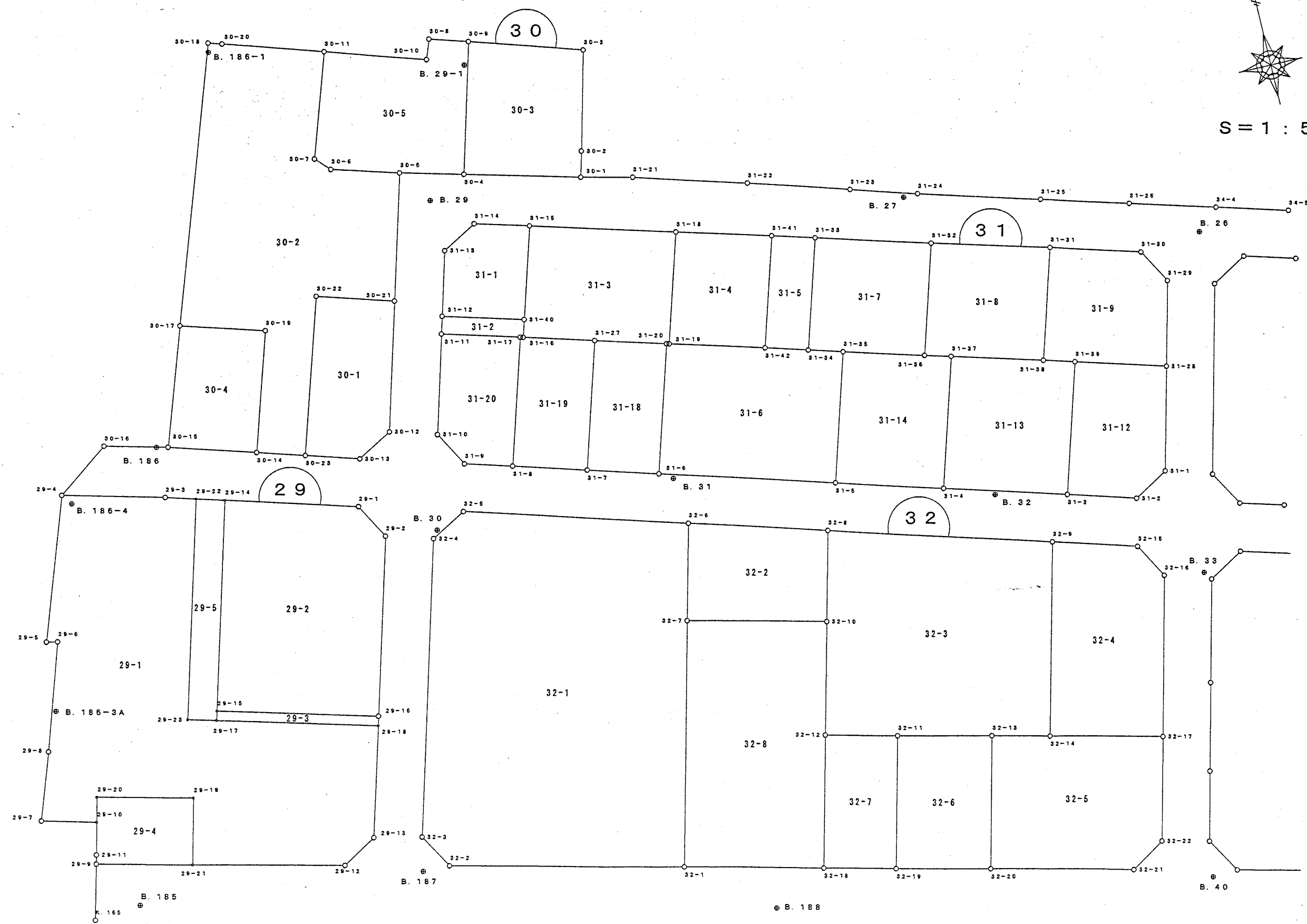


30 街区面積計算書



S = 1 : 500



倍横距面積計算書

地番: 30-1

測点	測角	方向角	距離	DX	DY	X	Y	測点	倍横距	倍面積
30-22		197-21-18				-193804.186	-44567.248	30-23		
30-23	90-03-22	107-24-40	6.761	-2.023	6.451	-193806.209	-44560.797	30-13	6.451	-13.050373
30-13	133-42-55	61-07-35	4.985	2.407	4.365	-193803.802	-44556.432	30-12	17.267	41.561669
30-12	134-32-11	15-39-46	16.405	15.796	4.429	-193788.006	-44552.003	30-21	26.061	411.659556
30-21	91-44-57	287-24-43	9.725	2.910	-9.279	-193785.096	-44561.282	30-22	21.211	61.724010
30-22	89-56-35	197-21-18	20.001	-19.090	-5.966	-193804.186	-44567.248	30-23	5.966	-113.890940
合計	540-00-00		57.877	0.000	0.000			倍面積		388.003922
								面積		194.001961
								坪数		58.685593

倍横距面積計算書

地番: 30-2

測点	測角	方向角	距離	DX	DY	X	Y	測点	倍横距	倍面積
30-19		197-21-12				-193802.403	-44572.934	30-14		
30-14	90-03-25	107-24-37	5.959	-1.783	5.686	-193804.186	-44567.248	30-23	5.686	-10.138138
30-23	89-56-41	17-21-18	20.001	19.090	5.966	-193785.096	-44561.282	30-22	17.338	330.982420
30-22	270-03-25	107-24-43	9.725	-2.910	9.279	-193788.006	-44552.003	30-21	32.583	-94.816530
30-21	88-14-55	15-39-38	16.104	15.506	4.347	-193772.500	-44547.656	30-5	46.209	716.516754
30-5	91-08-20	286-47-58	8.553	2.472	-8.188	-193770.028	-44555.844	30-6	42.368	104.733696
30-6	210-02-34	316-50-32	2.398	1.749	-1.640	-193768.279	-44557.484	30-7	32.540	56.912460
30-7	241-41-18	18-31-50	13.439	12.742	4.271	-193755.537	-44553.213	30-11	35.171	448.148882
30-11	89-54-16	288-26-06	12.576	3.977	-11.931	-193751.560	-44565.144	30-20	27.511	109.411247
30-20	179-31-17	287-57-23	1.742	0.537	-1.657	-193751.023	-44566.801	30-18	13.923	7.476651
30-18	91-11-17	199-08-40	35.569	-33.602	-11.665	-193784.625	-44578.466	30-17	0.601	-20.194802
30-17	88-14-46	107-23-26	10.583	-3.163	10.099	-193787.788	-44568.367	30-19	-0.965	3.052295
30-19	269-57-46	197-21-12	15.312	-14.615	-4.567	-193802.403	-44572.934	30-14	4.567	-66.746705
合計	1800-00-00		151.961	0.000	0.000			倍面積		1585.338230
								面積		792.669115
								坪数		239.782407

倍横距面積計算書

地番: 30-3

測点	測角	方向角	距離	DX	DY	X	Y	測点	倍横距	倍面積
30-9		195-19-49				-193774.617	-44539.961	30-4		
30-4	89-53-11	105-13-00	14.600	-3.832	14.088	-193778.449	-44525.873	30-1	14.088	-53.985216
30-1	89-32-09	14-45-09	3.279	3.171	0.835	-193775.278	-44525.038	30-2	29.011	91.993881
30-2	179-38-40	14-23-49	12.556	12.162	3.122	-193763.116	-44521.916	30-3	32.968	400.956816
30-3	93-38-10	288-01-59	14.378	4.451	-13.672	-193758.665	-44535.588	30-9	22.418	99.782518
30-9	87-17-50	195-19-49	16.541	-15.952	-4.373	-193774.617	-44539.961	30-4	4.373	-69.758096
合計	540-00-00		61.354	0.000	0.000			倍面積		468.989903
								面積		234.494952
								坪数		70.934723

倍横距面積計算書

地番: 30-4

測点	測角	方向角	距離	DX	DY	X	Y	測点	倍横距	倍面積
30-17		199-02-31				-193799.097	-44583.461	30-15		
30-15	88-23-35	107-26-06	11.034	-3.306	10.527	-193802.403	-44572.934	30-14	10.527	-34.802262
30-14	89-55-06	17-21-12	15.312	14.615	4.567	-193787.788	-44568.367	30-19	25.621	374.450915
30-19	90-02-14	287-23-26	10.583	3.163	-10.099	-193784.625	-44578.466	30-17	20.089	63.541507
30-17	91-39-05	199-02-31	15.310	-14.472	-4.995	-193799.097	-44583.461	30-15	4.995	-72.287640
合計	360-00-00		52.239	0.000	0.000			倍面積		330.902520
								面積		165.451260
								坪数		50.049006

倍横距面積計算書

地番: 30-5

測点	測角	方向角	距離	DX	DY	X	Y	測点	倍横距	倍面積
30-11		198-31-50				-193768.279	-44557.484	30-7		
30-7	118-18-42	136-50-32	2.398	-1.749	1.640	-193770.028	-44555.844	30-6	1.640	-2.868360
30-6	149-57-26	106-47-58	8.553	-2.472	8.188	-193772.500	-44547.656	30-5	11.468	-28.348896
30-5	178-34-58	105-22-56	7.981	-2.117	7.695	-193774.617	-44539.961	30-4	27.351	-57.902067
30-4	89-56-53	15-19-49	16.541	15.952	4.373	-193758.665	-44535.588	30-9	39.419	628.811888
30-9	92-37-25	287-57-14	4.895	1.509	-4.657	-193757.156	-44540.245	30-8	39.135	59.054715
30-8	92-13-56	200-11-10	2.556	-2.399	-0.882	-193759.555	-44541.127	30-10	33.596	-80.596804
30-10	268-12-12	288-23-22	12.736	4.018	-12.086	-193755.537	-44553.213	30-11	20.628	82.883304
30-11	90-08-28	198-31-50	13.439	-12.742	-4.271	-193768.279	-44557.484	30-7	4.271	-54.421082
合計	1080-00-00		69.099	0.000	0.000			倍面積		546.612698
								面積		273.306349
								坪数		82.675171