

11 街区面積計算書

⊕ B. 52

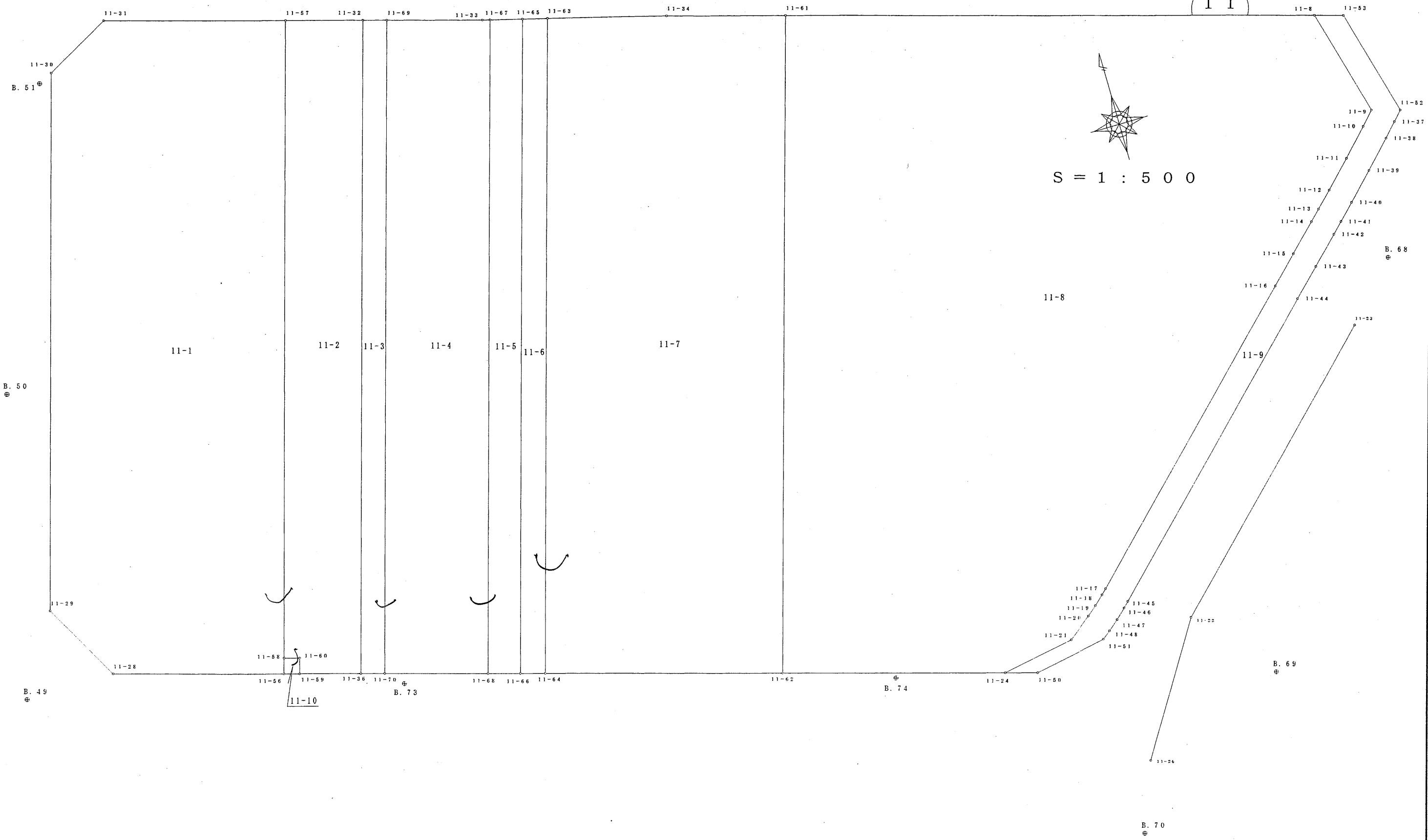
⊕ B. 78

⊕ B. 77

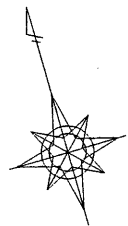
B. 76
⊕

B. 75
⊕

11



S = 1 : 500



11-8

11-9

B. 68 ⊕

B. 69 ⊕

B. 70 ⊕

B. 74 ⊕

B. 73 ⊕

B. 50 ⊕

B. 51 ⊕

B. 49 ⊕

倍横距面積計算書

地番: 11-1

測点	測角	方向角	距離	DX	DY	X	Y	測点	倍横距	倍面積
11-28		106-13-51				-194169.005	-44412.886	11-56		
11-56	90-01-30	16-15-21	2.104	2.020	0.589	-194166.985	-44412.297	11-58	0.589	1.189780
11-58	179-59-51	16-15-12	86.381	82.929	24.177	-194084.056	-44388.120	11-57	25.355	2102.664795
11-57	90-02-46	286-17-58	24.500	6.876	-23.515	-194077.180	-44411.635	11-31	26.017	178.892892
11-31	134-57-23	241-15-21	9.985	-4.802	-8.755	-194081.982	-44420.390	11-30	-6.253	30.026906
11-30	134-59-49	196-15-10	72.954	-70.038	-20.418	-194152.020	-44440.808	11-29	-35.426	2481.166188
11-29	135-04-08	151-19-18	12.007	-10.534	5.762	-194162.554	-44435.046	11-28	-50.082	527.563788
11-28	134-54-33	106-13-51	23.080	-6.451	22.160	-194169.005	-44412.886	11-56	-22.160	142.954160
合計	900-00-00		231.011	0.000	0.000			倍面積		5464.458509
								面積		2732.229255
								坪数		826.499350

倍横距面積計算書

地番: 11-2

測点	測角	方向角	距離	DX	DY	X	Y	測点	倍横距	倍面積
11-32		286-17-53				-194084.056	-44388.120	11-57		
11-57	89-57-19	196-15-12	86.381	-82.929	-24.177	-194166.985	-44412.297	11-58	-24.177	2004.974433
11-58	89-58-08	106-13-20	2.105	-0.588	2.021	-194167.573	-44410.276	11-60	-46.333	27.243804
11-60	270-02-01	196-15-21	2.104	-2.020	-0.589	-194169.593	-44410.865	11-59	-44.901	90.700020
11-59	89-58-51	106-14-12	8.212	-2.296	7.884	-194171.889	-44402.981	11-36	-37.606	86.343376
11-36	90-01-33	16-15-45	88.474	84.934	24.776	-194086.955	-44378.205	11-32	-4.946	-420.083564
11-32	90-02-08	286-17-53	10.330	2.899	-9.915	-194084.056	-44388.120	11-57	9.915	28.743585
合計	720-00-00		197.606	0.000	0.000			倍面積		1817.921654
								面積		908.960827
								坪数		274.960650

倍横距面積計算書

地番: 11-3

測点	測角	方向角	距離	DX	DY	X	Y	測点	倍横距	倍面積
11-36		106-16-00				-194172.795	-44399.876	11-70		
11-70	89-59-43	16-15-43	88.477	84.937	24.776	-194087.858	-44375.100	11-69	24.776	2104.399112
11-69	89-57-13	286-12-56	3.234	0.903	-3.105	-194086.955	-44378.205	11-32	46.447	41.941641
11-32	90-02-49	196-15-45	88.474	-84.934	-24.776	-194171.889	-44402.981	11-36	18.566	-1576.884644
11-36	90-00-15	106-16-00	3.234	-0.906	3.105	-194172.795	-44399.876	11-70	-3.105	2.813130
合計	360-00-00		183.419	0.000	0.000			倍面積		572.269239
								面積		286.134620
								坪数		86.555723

倍横距面積計算書

地番: 11-4

測点	測角	方向角	距離	DX	DY	X	Y	測点	倍横距	倍面積
11-33		286-13-04				-194087.858	-44375.100	11-69		
11-69	90-02-39	196-15-43	88.477	-84.937	-24.776	-194172.795	-44399.876	11-70	-24.776	2104.399112
11-70	90-00-39	106-16-22	14.014	-3.927	13.453	-194176.722	-44386.423	11-68	-36.099	141.760773
11-68	89-59-21	16-15-43	88.509	84.968	24.785	-194091.754	-44361.638	11-67	2.139	181.746552
11-67	88-54-56	285-10-39	1.035	0.271	-0.999	-194091.483	-44362.637	11-33	25.925	7.025675
11-33	181-02-25	286-13-04	12.979	3.625	-12.463	-194087.858	-44375.100	11-69	12.463	45.178375
合計	540-00-00		205.014	0.000	0.000			倍面積		2480.110487
								面積		1240.055244
								坪数		375.116711

倍横距面積計算書

地番: 11-5

測点	測角	方向角	距離	DX	DY	X	Y	測点	倍横距	倍面積
11-65		285-09-39				-194091.754	-44361.638	11-67		
11-67	91-06-04	196-15-43	88.509	-84.968	-24.785	-194176.722	-44386.423	11-68	-24.785	2105.931880
11-68	90-00-52	106-16-35	4.374	-1.226	4.199	-194177.948	-44382.224	11-66	-45.371	55.624846
11-66	89-59-06	16-15-41	88.594	85.050	24.808	-194092.898	-44357.416	11-65	-16.364	-1391.758200
11-65	88-53-58	285-09-39	4.374	1.144	-4.222	-194091.754	-44361.638	11-67	4.222	4.829968
合計	360-00-00		185.851	0.000	0.000			倍面積		774.628494
								面積		387.314247
								坪数		117.162560

倍横距面積計算書

地番: 11-6

測点	測角	方向角	距離	DX	DY	X	Y	測点	倍横距	倍面積
11-63		285-10-16				-194092.898	-44357.416	11-65		
11-65	91-05-25	196-15-41	88.594	-85.050	-24.808	-194177.948	-44382.224	11-66	-24.808	2109.920400
11-66	90-00-45	106-16-26	3.354	-0.940	3.220	-194178.888	-44379.004	11-64	-46.396	43.612240
11-64	89-59-14	16-15-40	88.659	85.112	24.826	-194093.776	-44354.178	11-63	-18.350	-1561.805200
11-63	88-54-36	285-10-16	3.355	0.878	-3.238	-194092.898	-44357.416	11-65	3.238	2.842964
合計	360-00-00		183.962	0.000	0.000			倍面積		594.570404
								面積		297.285202
								坪数		89.928774

倍横距面積計算書

地番: 11-7

測点	測角	方向角	距離	DX	DY	X	Y	測点	倍横距	倍面積
11-34		285-10-12				-194093.776	-44354.178	11-63		
11-63	91-05-28	196-15-40	88.659	-85.112	-24.826	-194178.888	-44379.004	11-64	-24.826	2112.990512
11-64	90-00-36	106-16-16	31.979	-8.960	30.698	-194187.848	-44348.306	11-62	-18.954	169.827840
11-62	89-59-27	16-15-43	88.984	85.424	24.918	-194102.424	-44323.388	11-61	36.662	3131.814688
11-61	89-56-29	286-12-12	16.047	4.478	-15.410	-194097.946	-44338.798	11-34	46.170	206.749260
11-34	178-58-00	285-10-12	15.935	4.170	-15.380	-194093.776	-44354.178	11-63	15.380	64.134600
合計	540-00-00		241.604	0.000	0.000			倍面積		5685.516900
								面積		2842.758450
								坪数		859.934431

倍横距面積計算書

地番: 11-8

測点	測角	方向角	距離	DX	DY	X	Y	測点	倍横距	倍面積
11-61		196-15-43				-194187.848	-44348.306	11-62		
11-62	89-59-36	106-15-19	30.123	-8.432	28.919	-194196.280	-44319.387	11-24	28.919	-243.845008
11-24	153-36-32	79-51-51	9.984	1.757	9.828	-194194.523	-44309.559	11-21	67.666	118.889162
11-21	153-02-29	52-54-20	3.979	2.400	3.174	-194192.123	-44306.385	11-20	80.668	193.603200
11-20	177-19-41	50-14-01	1.682	1.076	1.293	-194191.047	-44305.092	11-19	85.135	91.605260
11-19	177-35-45	47-49-46	1.719	1.154	1.274	-194189.893	-44303.818	11-18	87.702	101.208108
11-18	178-00-21	45-50-07	0.970	0.676	0.696	-194189.217	-44303.122	11-17	89.672	60.618272
11-17	179-32-34	45-22-41	46.836	32.899	33.336	-194156.318	-44269.786	11-16	123.704	4069.737896
11-16	179-57-44	45-20-25	5.001	3.515	3.557	-194152.803	-44266.229	11-15	160.597	564.498455
11-15	180-04-23	45-24-48	4.999	3.509	3.560	-194149.294	-44262.669	11-14	167.714	588.508426
11-14	179-53-39	45-18-27	1.976	1.390	1.405	-194147.904	-44261.264	11-13	172.679	240.023810
11-13	179-53-02	45-11-29	2.964	2.089	2.103	-194145.815	-44259.161	11-12	176.187	368.054643
11-12	179-22-17	44-33-46	4.912	3.500	3.447	-194142.315	-44255.714	11-11	181.737	636.079500
11-11	179-20-49	43-54-35	4.905	3.534	3.402	-194138.781	-44252.312	11-10	188.586	666.462924
11-10	179-19-30	43-14-05	2.479	1.806	1.698	-194136.975	-44250.614	11-9	193.686	349.796916
11-9	121-28-55	344-43-00	15.012	14.481	-3.957	-194122.494	-44254.571	11-8	191.427	2772.054387
11-8	121-32-32	286-15-32	71.684	20.070	-68.817	-194102.424	-44323.388	11-61	118.653	2381.365710
11-61	90-00-11	196-15-43	88.984	-85.424	-24.918	-194187.848	-44348.306	11-62	24.918	-2128.595232
合計	2700-00-00		298.209	0.000	0.000			倍面積		10830.066429
								面積		5415.033215
								坪数		1638.047548

倍横距面積計算書

地番: 11-9

測点	測角	方向角	距離	DX	DY	X	Y	測点	倍横距	倍面積
11-21		259-51-51				-194196.280	-44319.387	11-24		
11-24	26-23-18	106-15-09	4.409	-1.234	4.233	-194197.514	-44315.154	11-50	4.233	-5.223522
11-50	153-19-51	79-35-00	10.000	1.808	9.835	-194195.706	-44305.319	11-51	18.301	33.088208
11-51	153-17-59	52-52-59	1.392	0.840	1.110	-194194.866	-44304.209	11-48	29.246	24.566640
11-48	177-19-38	50-12-37	1.838	1.176	1.412	-194193.690	-44302.797	11-47	31.768	37.359168
11-47	177-37-57	47-50-34	1.853	1.244	1.374	-194192.446	-44301.423	11-46	34.554	42.985176
11-46	178-00-36	45-51-10	1.045	0.728	0.750	-194191.718	-44300.673	11-45	36.678	26.701584
11-45	179-31-30	45-22-40	46.850	32.909	33.346	-194158.809	-44267.327	11-44	70.774	2329.101566
11-44	179-57-16	45-19-56	5.000	3.515	3.556	-194155.294	-44263.771	11-43	107.676	378.481140
11-43	180-04-52	45-24-48	5.000	3.510	3.561	-194151.784	-44260.210	11-42	114.793	402.923430
11-42	179-54-49	45-19-37	1.983	1.394	1.410	-194150.390	-44258.800	11-41	119.764	166.951016
11-41	179-51-47	45-11-24	2.987	2.105	2.119	-194148.285	-44256.681	11-40	123.293	259.531765
11-40	179-22-35	44-33-59	4.952	3.528	3.475	-194144.757	-44253.206	11-39	128.887	454.713336
11-39	179-20-39	43-54-38	4.946	3.563	3.430	-194141.194	-44249.776	11-38	135.792	483.826896
11-38	179-18-24	43-13-02	2.500	1.822	1.712	-194139.372	-44248.064	11-37	140.934	256.781748
11-37	179-59-37	43-12-39	1.789	1.304	1.225	-194138.068	-44246.839	11-52	143.871	187.607784
11-52	121-31-31	344-44-10	15.000	14.471	-3.949	-194123.597	-44250.788	11-53	141.147	2042.538237
11-53	121-31-08	286-15-18	3.941	1.103	-3.783	-194122.494	-44254.571	11-8	133.415	147.156745
11-8	58-27-42	164-43-00	15.012	-14.481	3.957	-194136.975	-44250.614	11-9	133.589	-1934.502309
11-9	238-31-05	223-14-05	2.479	-1.806	-1.698	-194138.781	-44252.312	11-10	135.848	-245.341488
11-10	180-40-30	223-54-35	4.905	-3.534	-3.402	-194142.315	-44255.714	11-11	130.748	-462.063432
11-11	180-39-11	224-33-46	4.912	-3.500	-3.447	-194145.815	-44259.161	11-12	123.899	-433.646500
11-12	180-37-43	225-11-29	2.964	-2.089	-2.103	-194147.904	-44261.264	11-13	118.349	-247.231061
11-13	180-06-58	225-18-27	1.976	-1.390	-1.405	-194149.294	-44262.669	11-14	114.841	-159.628990
11-14	180-06-21	225-24-48	4.999	-3.509	-3.560	-194152.803	-44266.229	11-15	109.876	-385.554884
11-15	179-55-37	225-20-25	5.001	-3.515	-3.557	-194156.318	-44269.786	11-16	102.759	-361.197885
11-16	180-02-16	225-22-41	46.836	-32.899	-33.336	-194189.217	-44303.122	11-17	65.866	-2166.925534
11-17	180-27-26	225-50-07	0.970	-0.676	-0.696	-194189.893	-44303.818	11-18	31.834	-21.519784
11-18	181-59-39	227-49-46	1.719	-1.154	-1.274	-194191.047	-44305.092	11-19	29.864	-34.463056
11-19	182-24-15	230-14-01	1.682	-1.076	-1.293	-194192.123	-44306.385	11-20	27.297	-29.371572
11-20	182-40-19	232-54-20	3.979	-2.400	-3.174	-194194.523	-44309.559	11-21	22.830	-54.792000
11-21	206-57-31	259-51-51	9.984	-1.757	-9.828	-194196.280	-44319.387	11-24	9.828	-17.267796
合計	5220-00-00		222.903	0.000	0.000			倍面積 面積		715.584626 357.792313

倍横距面積計算書

地番: 11-9

測点	測角	方向角	距離	DX	DY	X	Y	測点	倍横距	倍面積
								坪数		108.232175

倍 横 距 面 積 計 算 書

地 番: 11-10

測 点	測 角	方 向 角	距 離	DX	DY	X	Y	測 点	倍 横 距	倍 面 積
11-58		196-15-21				-194169.005	-44412.886	11-56		
11-56	89-57-59	106-13-20	2.105	-0.588	2.021	-194169.593	-44410.865	11-59	2.021	-1.188348
11-59	90-02-01	16-15-21	2.104	2.020	0.589	-194167.573	-44410.276	11-60	4.631	9.354620
11-60	89-57-59	286-13-20	2.105	0.588	-2.021	-194166.985	-44412.297	11-58	3.199	1.881012
11-58	90-02-01	196-15-21	2.104	-2.020	-0.589	-194169.005	-44412.886	11-56	0.589	-1.189780
合 計	360-00-00		8.418	0.000	0.000			倍面積		8.857504
								面 積		4.428752
								坪 数		1.339697